

 **SAUER**
D A S W E R K Z E U G

SINCE
1957
GERMANY

TRADITION FUTURE

1957

Hans-Joachim Sauer founded a tool company in Hamburg for the repair of cars and commercial vehicles. He thus laid the foundation for the already then growing tool market for hand and special tools.

As early as the 1970s, Sauer developed time-efficient solutions for complex repairs. Process and material optimisation, time and cost savings have always been important pillars of the SAUER philosophy. Over the years, SAUER distinguished itself as the specialist for automotive repairs.

By the end of the 1990s, the company had built up a very large customer base nationally. But SAUER was also successful internationally, with around 12,000 high-quality products already on the market at that time.

- PKW
- TRANSPORTER
- NFZ
- AGRICULTURE
- INDUSTRY



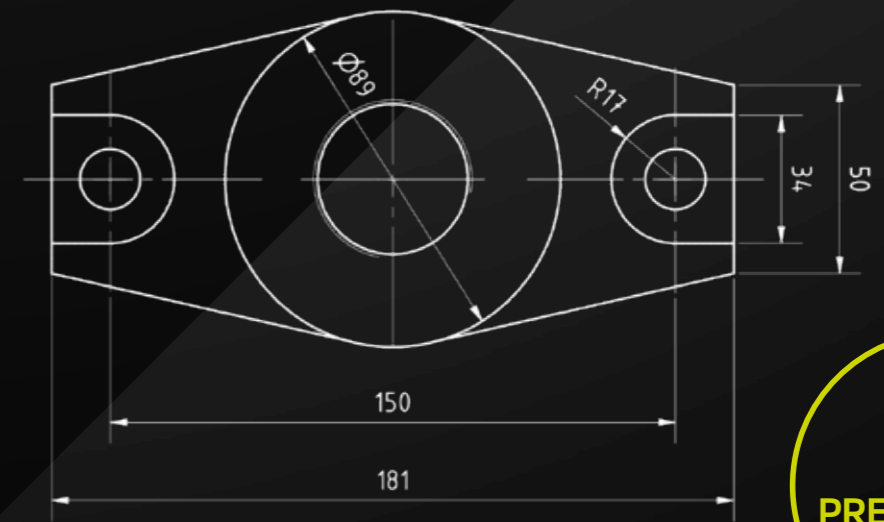
ABOUT US

TRADITION AND FUTURE	PAGE 02 - 03
SAUER PAST & PRESENT	PAGE 04 - 05
INNOVATIVE DEVELOPMENT	PAGE 06 - 07
THE MATERIAL	PAGE 08 - 09
CONVINCING PACKAGING CONCEPT	PAGE 14 - 15
INTERESTED? HERE YOU WILL FIND EXACTLY WHAT YOU ARE LOOKING FOR	PAGE 16 - 17

ASSORTMENT

WORKSHOP TROLLEYS / MODULE INSERTS	PAGE 20 - 27
BASIC SETS	PAGE 28 - 35
GEARBOX / CLUTCH	PAGE 36 - 42
WHEEL BEARINGS	PAGE 43 - 51
JOINT TOOLS	PAGE 52 - 59
RUBBER BEARING TOOL	PAGE 60 - 63
TRANSMISSION	PAGE 64 - 68
HYDRAULIC TOOL	PAGE 69 - 72
MANUAL TOOL	PAGE 73 - 78
PRESS FRAME / PRESS BRACKET	PAGE 79 - 83
SPINDLES / NUTS	PAGE 84 - 88
PRESSURE AND SUPPORT SLEEVES	PAGE 89 - 93
ADAPTERS	PAGE 94 - 97
ACCESSORIES	PAGE 98 - 99

A STORY OF **SUCCESS**



**SAUER
PRESS BRIDGE**

SAUER earlier...

At SAUER, the focus has always been on professional and competent production and competent manufacturing. Even for individual components which are not "Made in Germany", care is taken to ensure that the quality always quality always meets German standards. Thus, the high-quality, visually appealing and, above all, in use visually appealing and, above all, practical in practical product range.

THIS IS WHAT WE STAND FOR GERMAN QUALITY STANDARDS

Even today, almost all products are manufactured in Germany. And proven German quality standards are still required and met even for the few components not produced in Germany.

TECHNICAL
INNOVATIONS
MADE IN GERMANY

SAUER today...

In 2015, the hand and special tool specialist SW-Stahl GmbH took over the SAUER brand rights. Since then, an experienced team of technicians, automotive experts and an accomplished sales and marketing team have been developing a concept to successfully re-establish SAUER in the tool market. To this end, many creative ideas were implemented, improved tool versions were developed and new, problem-solving products were devised. The result is a comprehensive range of intelligent special tools that offers the optimum solution for every possible application. With the focus on quality and functionality, the basic idea of the "old" SAUER is taken up and continued. SAUER products are modular in design, function across all brands and are permanently adapted to the latest technical developments in the automotive market. In this way, investments for the workshop can be reduced.

The SAUER team is the ideal partner when it comes to solving specific repair issues. The experienced technical staff are familiar with the daily problems in the workshop and work continuously on the development and optimisation of intelligent special tools.

ENGINEERING

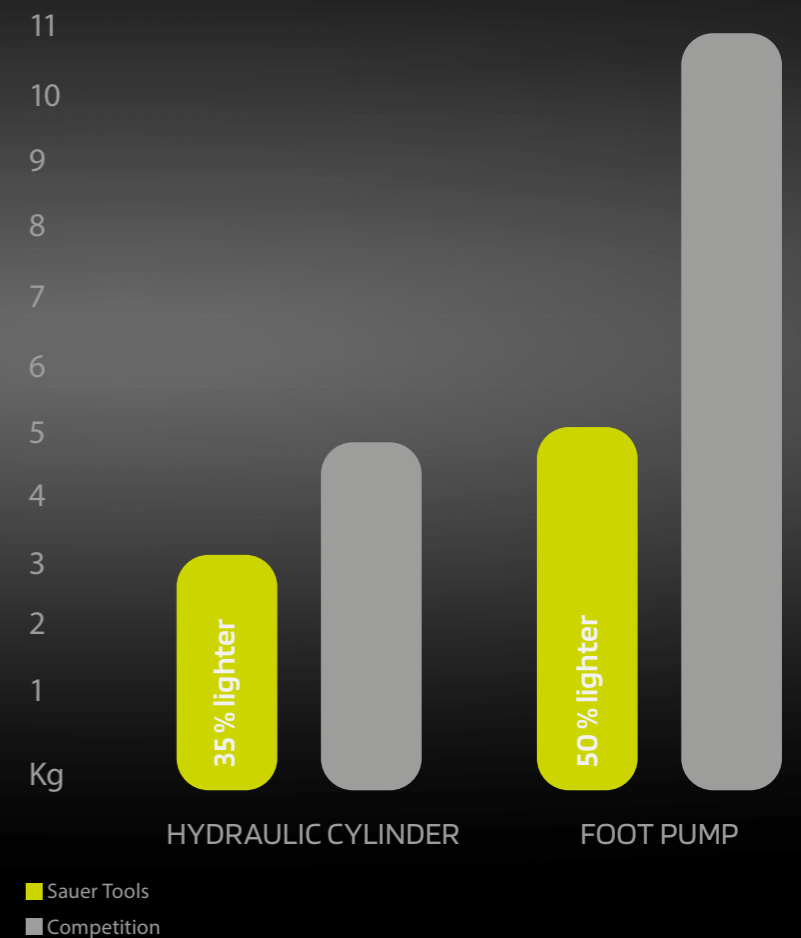
INNOVATIVE TECHNICAL DEVELOPMENTS

IN ADDITION TO THE NEW, APPEALING AND MODERN PRODUCT DESIGN, SAUER IS REVOLUTIONISING THE SPECIAL TOOLS WITH MANY OTHER ADVANTAGES THAT WILL CONVINC THE CUSTOMER.



LESS WEIGHT - EASIER WORK

Thanks to the design of improved tools, SAUER has succeeded in achieving considerable weight savings for essential tools such as the foot pump and hydraulic cylinder. Thanks to the use of aluminium, the universally applicable SAUER hydraulic cylinder now weighs only 3.4 kg (comparable cylinders: 5.2 kg). The material change also has the advantage that forces of up to 20 tonnes (comparable cylinders: 17 tonnes) can be generated. And the SAUER foot pump is also significantly lighter thanks to the use of aluminium (5.5 kg instead of 11 kg).



THE MATERIAL

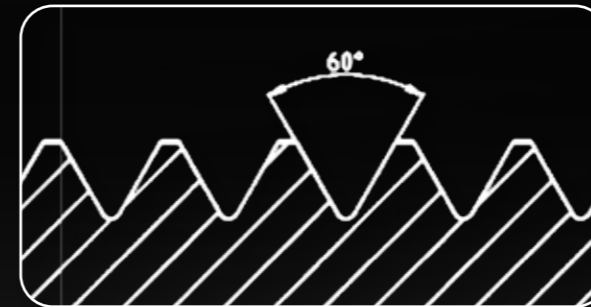
When working on motor vehicles or commercial vehicles, the tools are often subjected to high loads and stresses. SAUER is taking its tools to a new material level to make their use even better and safer. The use of hardened and tempered 42CrMo4 steel sets new standards. The very good toughness at a given tensile strength far exceeds

the properties of the the properties of the normally used industrial steel. industrial steel normally used. 42CrMo4 has a very high load limit and the property that it constricts before breaking. This means that incorrect use or excessive loading of the tools can be detected visually before any danger arises from the material breaking or splintering.

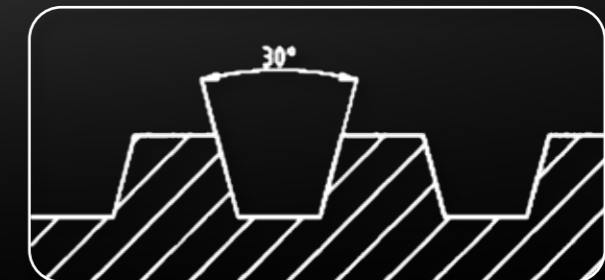
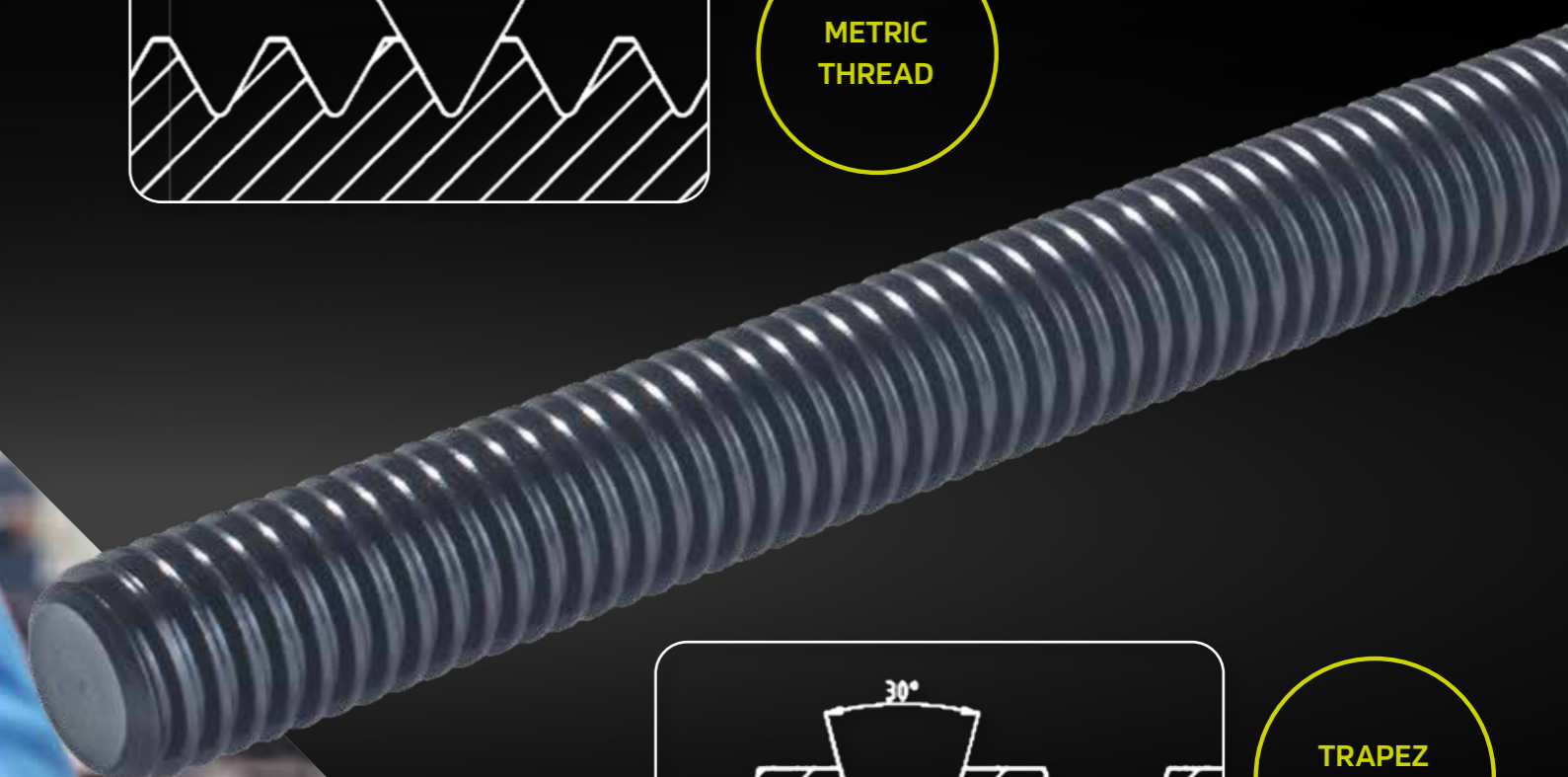
MANUALLY OPERATED SPINDLES

In addition to the high-strength material, the new manually operated SAUER spindles have another decisive feature: they are equipped with an ISO trapezoidal thread in accordance with DIN103. This thread can absorb and transmit large forces in the axial direction because the threads are designed in the form of an isosceles trapezoid. This significantly increases the strength of the threads compared to conventional metric threads. The production of the thread

also increases the maximum load limit, because the thread of the SAUER spindles is rolled and not cut. This additional cold forming increases the strength of the material enormously. The combination of optimised material and improved design and production methods makes SAUER spindles ideal for use with very high loads and requirements.



**METRIC
THREAD**

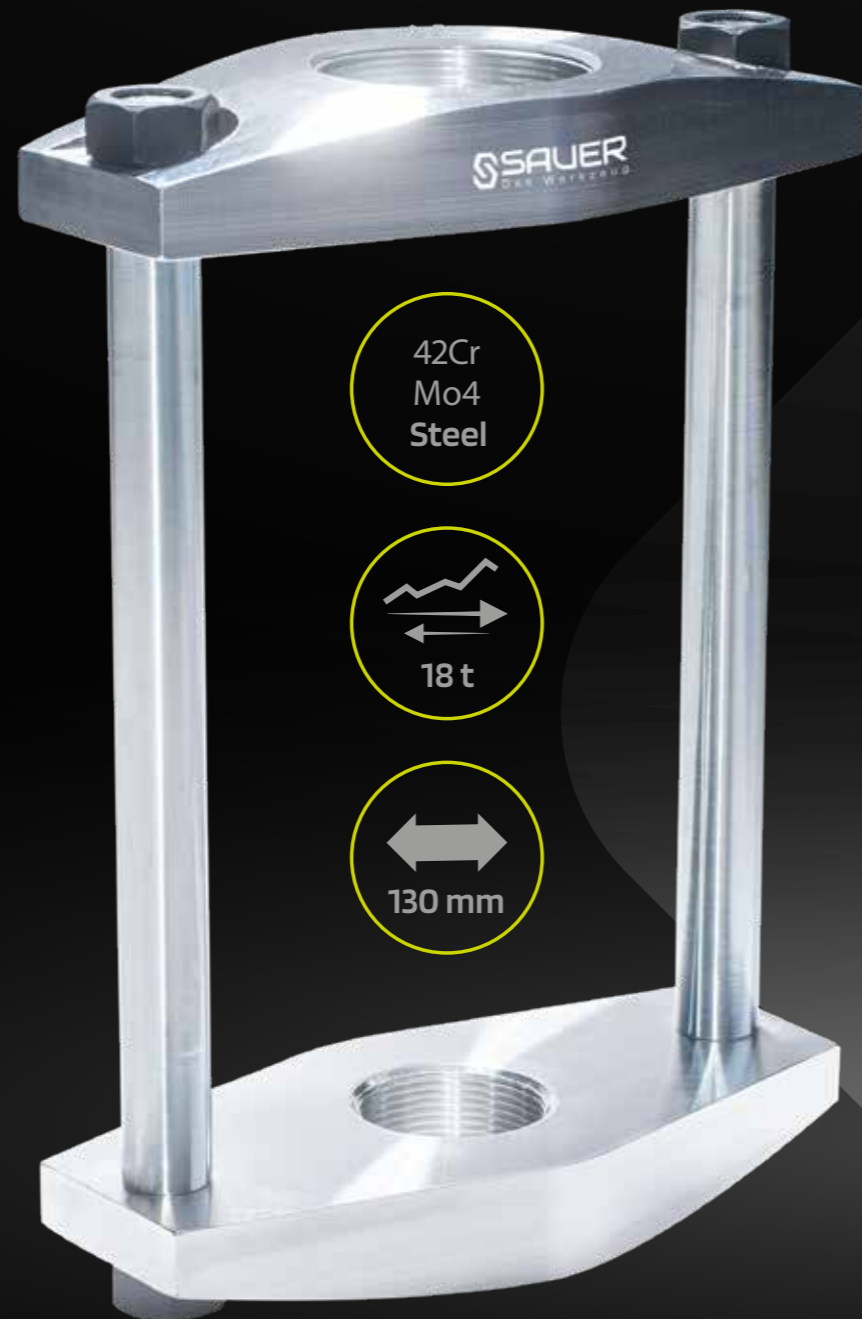


**TRAPEZ
THREAD**

PRESS FRAMEWORK

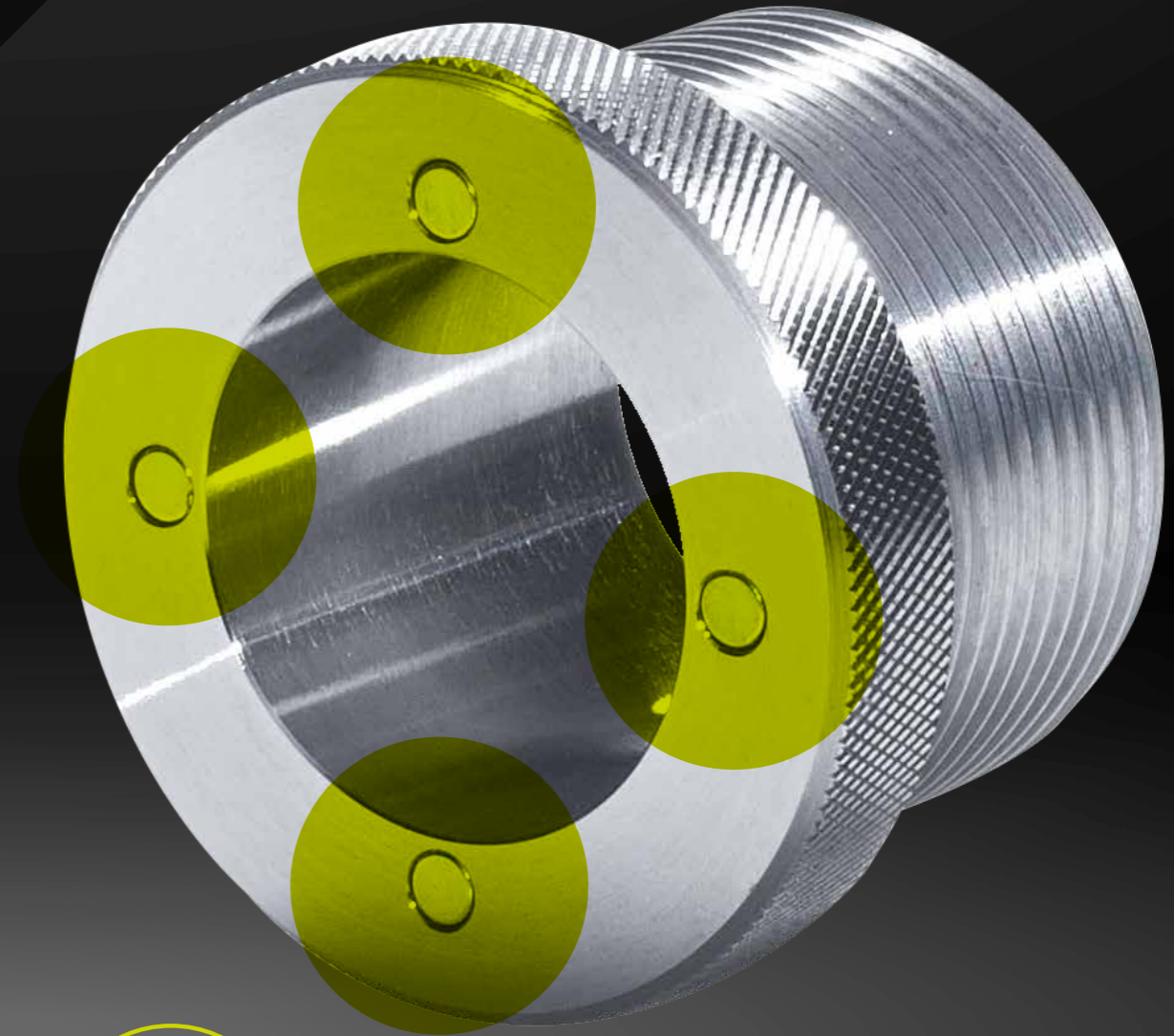
Extremely resilient, flexible and compatible – that’s the new SAUER press frame. It consists of two interchangeable pressing bridges and threaded rods. This means that the right frame can be used flexibly for every possible application. The length of the threaded rods (short, medium, long) and the mounts of the press bridges (open and closed) can be variably selected. This makes it possible to adapt to almost all hydraulic cylinders and pressure/support sleeves commonly available on the market. The frame also offers a wider working range of 130 mm to press out large diameter rubber bearings.

diameter. Thanks to the use of 42CrMo4, the SAUER press frame can withstand maximum loads of 18 tonnes. The new SAUER press frame is indispensable in every workshop due to its extreme load capacity and great flexibility and compatibility.



- Interchangeable connecting rods
- Connecting rods in 200 mm, 300 mm and 400 mm length
- Connecting rods with spanner sockets for secure screw connection
- Recessed, protected nuts
- Trapezoidal flanges for better force distribution
- With Sauer magnet system for secure hold of the compression sleeves

NEODYM MAGNET SIMPLY HOLDS!



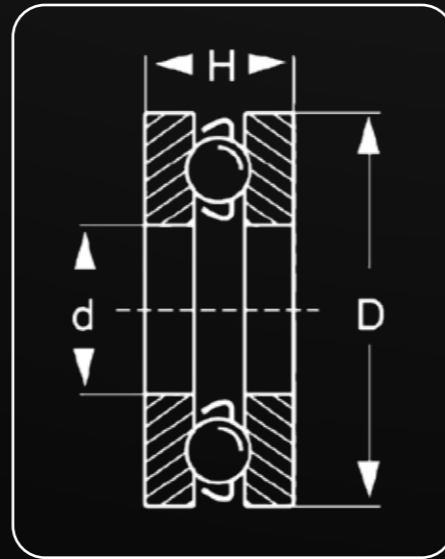
**MAGNET
SYSTEMS**



Simple handling is of fundamental importance in a workshop. When working with press frames and the like, various parts (pressure pieces etc.) have to be put together. This can sometimes be difficult and require the use of both hands. Many SAUER special tools are therefore equipped with magnet systems. Glued-in neodymium magnets do this work and hold the tool together. Neodymium magnets (neodymium-iron-boron) are among the strongest permanent magnets in the world and ensure a secure hold.

AXIAL BALL BEARING

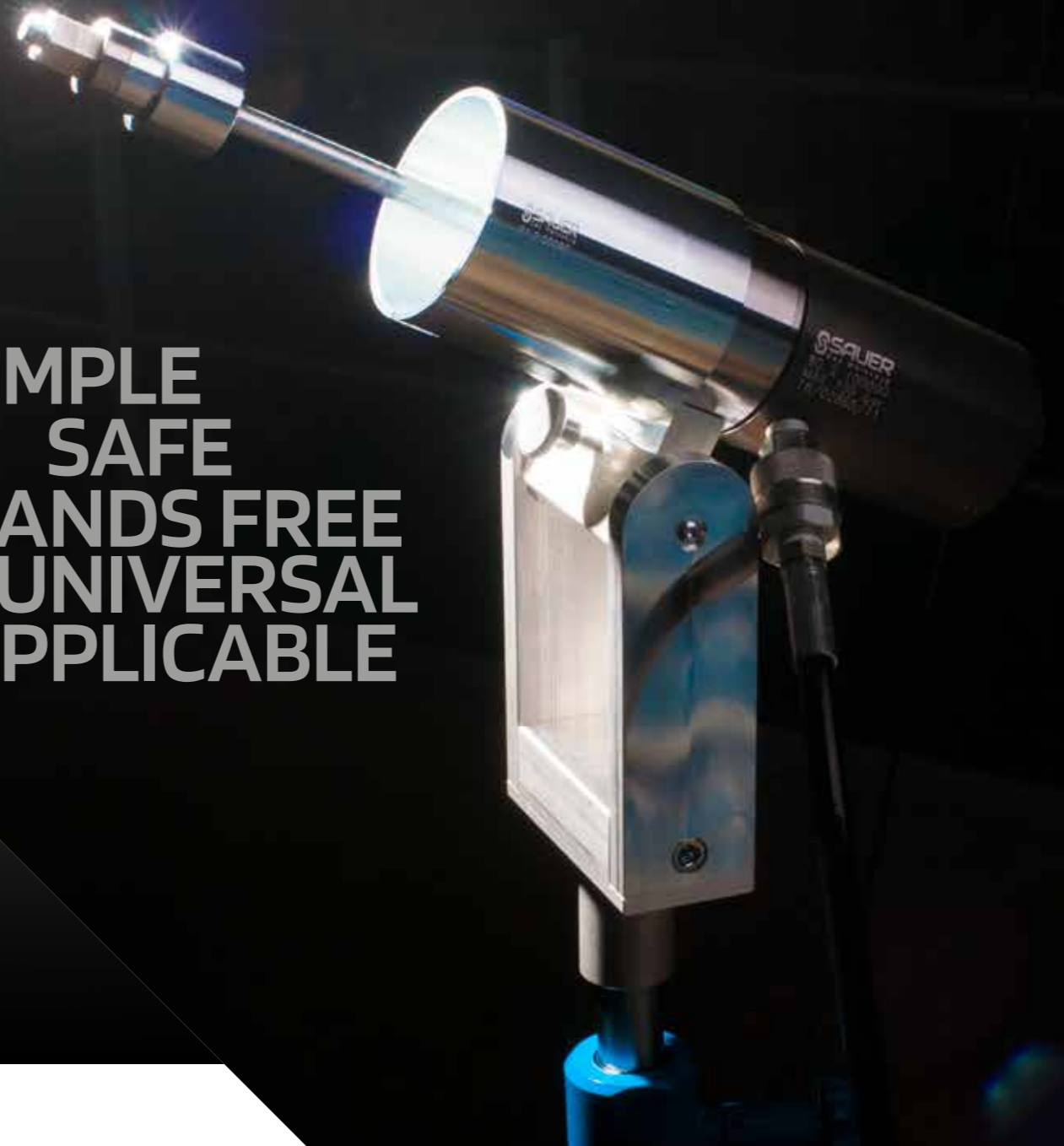
The axial ball bearings used by SAUER are also technically mature and suitable for professional use. Ball bearings are used to ensure friction-free rotation when manually pressing with spindle and nut. The SAUER thrust nuts press directly onto the SAUER bearing adapters on both sides of the spindle, ensuring uniform, low-friction pressing. The SAUER axial ball bearings are completely enclosed by the bearing adapter, preventing the bearing shells from bursting due to particularly high forces. The ball bearing has no radial room for manoeuvre, cannot be pressed apart and therefore enables perfect rotation even under very high loads.



CYLINDER HOLDER

Easy to handle. That is the requirement for the SAUER cylinder holder. Thanks to its innovative design, the SAUER cylinder holder offers the user complete freedom of use. It is fastened with a separate screw in the adapter plates and in the press bridges. The SAUER hydraulic cylinder is screwed in and held via the adapter plate / press bridge. This means that no clamping force or other external force acts on the cylinder; nothing is screwed onto it that would interfere with other work. The cylinder can be fitted and removed quickly. Competition cylinders can also be combined with this cylinder holder using appropriate adapters.

**SIMPLE
SAFE
HANDS FREE
UNIVERSAL
APPLICABLE**



A CONVINCING PACKAGING

CONCEPT – WITH **A MODULAR SYSTEM**

In addition to the fresh and modern combination of grey and the new SAUER green, the well thought-out packaging concept of the boxes and cases is particularly impressive and clearly stands out from the boxes commonly available on the market. All boxes and cases are compatible and fit into the SAUER workshop trolley like a modular system. Each drawer and case has a fixed 3/3 size.

This means that a comprehensive set of pressure pieces, including customised foam inserts, for example, fits into the SAUER workshop trolley. The boxes have the sizes 2/3, 1/3 and 1/6, so that they can be combined to fill a drawer. This means that the required tools can be stored individually in the mobile SAUER workshop trolley.

- Foam inserts adapted to workshop trolley size
- Assortments can be customised
- The right tool - always to hand
- Compatible with SW-Stahl and SAUER workshop trolleys



INTERESTED?

THEN GET STARTED RIGHT AWAY!

TOOL DATABASE

Our online database TOOL-IS gives you access to a constantly growing information platform that provides you with comprehensive information on our product range.

TECHNICAL DETAILS

In TOOL-IS you will find even more technical details than those given in the catalogue, as well as product and application images and instruction manuals for products requiring explanation.

PRODUCT RANGES/ SPARE PARTS LISTS/ ACCESSORIES

TOOL-IS gives you direct access to the spare parts lists for product ranges, as well as to optional accessories or set articles containing the current product.

Use the various access options to either get an overview of our product range or to find specific tools that are of interest to you.



www.tool-is.com

OUR ASSORT- MENT

**SAUER DRIVE SET, HY-
DRAULIC, 13-PIECE**

Art. 80220033



**SAUER PRESSURE
PLATE, MODEL 1**

Art. 81231700



**SAUER TOOL
TROLLEY**

Art. 80150000



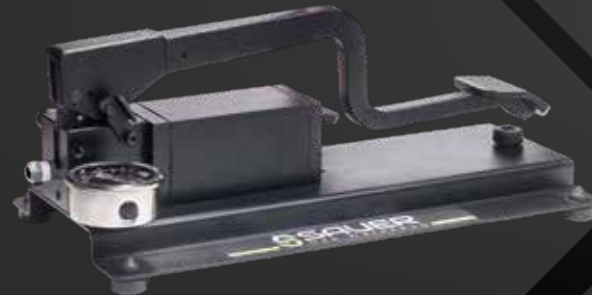
**SAUER INTERNAL BE-
ARING RING REMOVAL
SET, 40-61 MM**

Art. 81231300



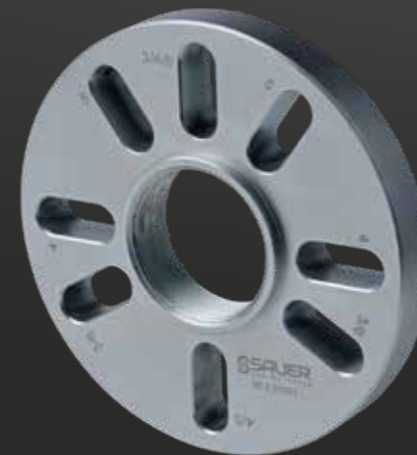
**SAUER ALUMINIUM
HYDRAULIC FOOT
PUMP, 700 BAR**

Art. 80210100



**SAUER PERFORA-
TED DISC**

Art. 80220301



WORKSHOP TROLLEY / MODULAR INSERTS

SAUER
Das Werkzeug

PAGE 27 – 33

SAUER MOBILE TOOL CHEST WITH BASIC TOOL KIT

This set variant contains all the necessary tools for mechanical work on axial components.

It includes the following inserts:

- 80 150300 SAUER Drive spindle and nuts for mechanical work
- 80 150400 SAUER Wheel bearing tool set for conventional wheel bearings, Ø 60–90 mm
- 80 150700 SAUER Thrust sleeve set, 30 mm, Ø 30–90 mm
- 80 150800 SAUER Support sleeve set, 100/120 mm, Ø 38–98 mm



DESCRIPTION

SAUER Mobile tool chest with basic tool kit

ARTICLE

80155000

SAUER MOBILE TOOL CHEST WITH TOOL KIT INCL. HYDRAULIC CYLINDER AND FOOT PUMP

In combination with the extremely light SAUER hydraulic cylinder and the hydraulic foot pump, this set is optimal for most tasks on axial components.

Includes the following inserts:

- 80 150200 SAUER Drive spindles and nuts for mechanical and hydraulic tasks
- 80 150400 SAUER Wheel bearing tool set for conventional wheel bearings, Ø 60–90 mm
- 80 150600 SAUER Closed press frame
- 80 150700 SAUER Thrust sleeve set, 30 mm, Ø 30–90 mm
- 80 150800 SAUER Support sleeve set, 100/120 mm, Ø 38–98 mm
- 80 150900 SAUER Hydraulic cylinder
- 80 151000 SAUER Hydraulic foot pump



DESCRIPTION

SAUER Mobile tool chest with tool kit incl. hydraulic cylinder and foot pump

ARTICLE

80155200

SAUER MOBILE TOOL CHEST WITH TOOL KIT MANUALLY AND HYDRAULIC DRIVE

Compared to the basic variant, the article 80 155100 includes additional feed rods and pressure spindles for use in the SAUER hydraulic cylinder and another tool insert with the SAUER press frame.

Includes the following inserts:

- 80 150200 SAUER Drive spindles and nuts for mechanical and hydraulic tasks
- 80 150400 SAUER Wheel bearing tool set for conventional wheel bearings, Ø 60–90 mm
- 80 150600 SAUER Closed press frame
- 80 150700 SAUER Thrust sleeve set, 30 mm, Ø 30–90 mm
- 80 150800 SAUER Support sleeve set, 100/120 mm, Ø 38–98 mm



DESCRIPTION

SAUER Mobile tool chest with tool kit manually and hydraulic drive

ARTICLE

80155100

SAUER MOBILE TOOL CHEST WITH TOOL KIT, EQUIPPED, 207-PIECE

The basic variant has been expanded with a C-shaped pressing clamp, the patented SAUER cylinder holder, a 5 kg slide hammer, and a tool set for disassembling wheel hubs and drive shafts.

Includes the following inserts:

- 80 150100 SAUER Drive spindles and nuts for mechanical and hydraulic tasks incl. slide hammer
- 80 150400 SAUER Wheel bearing tool set for conventional wheel bearings, Ø 60–90 mm
- 80 150500 SAUER Pressing clamp plus cylinder holder
- 80 150600 SAUER Closed press frame
- 80 150700 SAUER Thrust sleeve set, 30 mm, Ø 30–90 mm
- 80 150800 SAUER Support sleeve set, 100/120 mm, Ø 38–98 mm
- 80 150900 SAUER Hydraulic cylinder
- 80 151000 SAUER Hydraulic foot pump
- 80 151100 SAUER Wheel hub tool set



DESCRIPTION

SAUER Mobile tool chest with tool kit, equipped, 207-piece

ARTICLE

80155300

SAUER WORKSHOP MOBILE TOOL CHEST, EMPTY

SAUER workshop mobile tool chest, empty.
SAUER workshop mobile tool chest with 5 drawers.

- Drawers Full extension, ball bearing
- Soft-Close indent on each drawer
- Central lockable
- With 40 mm multiplex workbench
- Plastic edge protection
- Incl. waste bin and spray can holder
- 2 castors, 2 wheels outside

Workshop mobile tool chest dimensions:

- LxWxH: 1010 x 520 x 1045 mm
- Weight: 89 kg

Internal dimensions of drawers

- Width: 815 mm
- Depth: 395 mm
- Height 1st - 3rd drawer: 110 mm
- Height 4th and 5th drawer: 175 mm
- Drawer Capacity:
- Per drawer 50 kg
- Total 300 kg



DESCRIPTION	ARTICLE
SAUER Workshop mobile tool chest, empty	80150000

SAUER TOOL INSERT, 51-PIECE

equipped insert, drive with percussion hammer.



DESCRIPTION	ARTICLE
Sauer Tool insert, 51-piece	80150100

SAUER TOOL INSERT

■ equipped insert, drive without percussion hammer



DESCRIPTION	ARTICLE
Sauer Tool insert	80150200

SAUER TOOL INSERT

■ equipped insert, drive without percussion hammer



DESCRIPTION	ARTICLE
Sauer Tool insert	80150300

SAUER TOOL INSERT, 31-PIECE

equipped insert, pressure sleeves, short.



DESCRIPTION	ARTICLE
Sauer Tool insert, 31-piece	80150700

SAUER TOOL INSERT, 31-PIECE

equipped insert, pressure sleeves, long.



DESCRIPTION
Sauer tool insert, 31-piece

ARTICLE
80150800

SAUER TOOL INSERT, 7-PIECE

equipped insert, press frame.



DESCRIPTION
Sauer Tool insert, 7-piece

ARTICLE
80150600

SAUER TOOL INSERT, 15-PIECE

equipped insert, pressing clamp with cylinder holder.



DESCRIPTION
Sauer Tool insert, 15-piece

ARTICLE
80150500

SAUER TOOL INSERT, 11-PIECE

equipped insert, drive shaft and wheel hub.

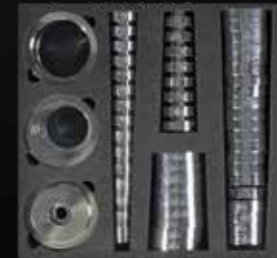


DESCRIPTION
Sauer Tool insert, 11-piece

ARTICLE
80151100

SAUER TOOL INSERT, 59-PIECE

equipped insert, wheel bearing tool.



DESCRIPTION
Sauer Tool insert, 59-piece

ARTICLE
80150400

SAUER HYDRAULIC CYLINDER, 2-PIECE

- SAUER foam insert, size 1/3
- Dimension 202 x 395 mm
- Soft foam insert
- Equipped with 2 tools

Contents:

- Hydraulic cylinder, 20 t
- Adapter plate for holding pressure and support sleeves, with magnet system



DESCRIPTION
SAUER Hydraulic cylinder, 2-piece

ARTICLE
80150900

SAUER TOOL INSERT, HYDRAULIC FOOT PUMP

equipped insert, hydraulic foot pump.



DESCRIPTION
SAUER tool insert, hydraulic foot pump

ARTICLE
80151000



BASIC- SET

PAGE 34 - 41

SAUER ALUMINIUM HYDRAULIC CYLINDER, 20 T

High-performance hydraulic cylinder with a max. pressing force of 20 tonnes. The hydraulic cylinder is made of steel and aluminium, and currently **lightest** hydraulic cylinder on the market at 3.4 kg.

Description:

- Hollow piston cylinder with quick coupling and aluminium thread protector
- Maximum force: 20 t
- Socket for threaded spindle: M20 × 2.5
- Screw thread on pressure side: 2 1/4" - 14 UNS
- Screw thread on tensioning side: M42 × 2.0
- Stroke: 50 mm
- Weight: 3.4 kg
- Dimensions: ø 89 mm × 160 mm



DESCRIPTION	ARTICLE
SAUER Aluminium hydraulic cylinder, 20 t	80210000

SAUER DRIVE SET, HYDRAULIC, 13-PIECE

This basic set is used as a hydraulic drive for almost all tensioning and press work on wheel bearings, drive shafts, rubber bearings and supporting joints. In combination with the Sauer press frames or the Sauer pressure pieces, this set is a must for any workshop.



DESCRIPTION	ARTICLE
SAUER drive set, hydraulic, 13-piece	80220033

SAUER BASIC SET WITH PRESS FRAME, 5-PIECE

With universal press frame in closed design and 20 t hydraulic cylinder. Designed to fit universal pressure and support sleeves with 30 mm connectors.



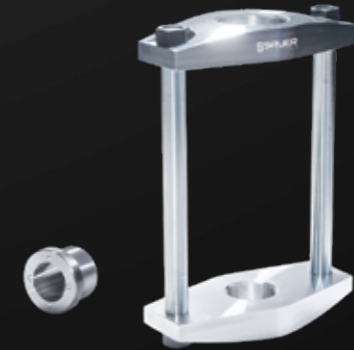
DESCRIPTION	ARTICLE
SAUER Basic set with press frame, 5-piece	81230500

SAUER PRESS FRAME, CLOSED DESIGN, 2-PIECE

Sturdy press frame in closed design made of high-strength tempered steel. The enclosed threaded sleeve is designed for pressure pieces with ø 30 mm mounts and equipped with the Sauer magnet system. The height can be easily adjusted using the threaded sleeve.

Description:

- Internal width: 130 mm
- Internal length: 300 mm
- Socket thread 1: 2 1/4" - 14 UNS
- Socket thread 2: M42 × 2.0
- Max. load: 17 tonnes
- Weight: 5.5 kg



DESCRIPTION	ARTICLE
SAUER Press frame, closed design, 2-piece	80220047

SAUER BASIC SET WITH PRESS FRAME

With press frame for vehicle pressure and support sleeves and 20 t hydraulic cylinder.



DESCRIPTION	ARTICLE
SAUER Basic Set with Press Frame	81230600

SAUER PRESS FRAME, OPEN DESIGN

Sturdy press frame in an open design to accommodate pressure and support sleeve sets for vehicles. Both the frame and the adapter ring supplied are equipped with the Sauer magnetic system. Fast, maintenance-free holding of the pressure pieces is thereby guaranteed.

Description:

- Internal width: 130 mm
- Internal length: 300 mm
- Socket thread 1: 2 1/4" - 14 UNS
- Socket thread 2: Open socket with adapter ring
- Max. load: 17 tonnes
- Weight: 5.3 kg



DESCRIPTION	ARTICLE
SAUER Press Frame, Open Design	80220032

SAUER PRESSURE AND SUPPORT SLEEVE SET, HYDRAULIC

Universal pressure and support sleeve set with internal diameters of 22 to 68 mm and lengths of 40 mm and 100 mm, incl. hydraulic cylinder and press frame.



DESCRIPTION	ARTICLE
SAUER Pressure and support sleeve set, hydraulic	81230900

SAUER PRESSURE AND SUPPORT SLEEVE SET

Universal pressure and support sleeve set with internal diameters of 22 to 68 mm and lengths of 40 mm and 100 mm



DESCRIPTION	ARTICLE
SAUER pressure and support sleeve set	81230901

SAUER PRESSURE AND SUPPORT SLEEVE SET, MANUAL

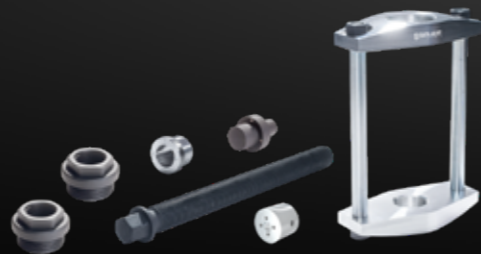
Universal pressure and support sleeve set with internal diameters of 22 to 68 mm and lengths of 40 mm and 100 mm, incl. manual pressure spindle, socket adapter, and press frame.



DESCRIPTION	ARTICLE
SAUER Pressure and Support Sleeve Set, Manual	81231600

SAUER DRIVE SET, MANUAL

with press frame.



DESCRIPTION	ARTICLE
SAUER drive set, manual	81231601

SAUER PRESSURE AND SUPPORT SLEEVE SET WITH PRESS FRAME

Universal pressure and support sleeve set with internal diameters of 22 to 68 mm and lengths of 40 mm and 100 mm. Without drive.



DESCRIPTION	ARTICLE
SAUER Pressure and Support Sleeve Set with Press Frame	81231000

BASIC SET PRESS FRAME CLOSED WITHOUT HYDRAULIC CYLINDER

SAUER Press Frame, Closed Design Sturdy press frame in closed design made of high-strength tempered steel. The enclosed threaded sleeve is designed for pressure pieces with $\varnothing 30$ mm mounts and equipped with the Sauer magnet system. The height can be easily adjusted using the threaded sleeve. Incl. pressure mandrel short, 25 mm. Description: Internal width: 130 mm Internal length: 300 mm Socket thread 1: 2 1/4" - 14 UNS Socket thread 2: M42 x 2.0 Max. load: 17 tonnes Weight: 5.5 kg



DESCRIPTION	ARTICLE
Basic set Press frame closed without hydraulic cylinder	81231001

SAUER CYLINDER HOLDER, 9-TEILIG

This cylinder holder made of aluminium can be deployed rapidly and is highly flexible. The Sauer adapter plates and/or press frames are fitted with an additional holder, which can be quickly and easily inserted into the holding device of the cylinder holder and locked in place. The holding device can be rotated and fixed in place in any position with a locking handle. The cylinder holder may be mounted on any standard transmission jack with a $\varnothing 30$ mm piston rod. Adapters for transmission jacks with $\varnothing 25$ mm and $\varnothing 36$ mm piston rods can be added at any time.

The scope of delivery of the set also includes screw-on holders for Sauer press frames and adapter plates, as well as a socket for transmission jacks with a piston rod diameter of 30 mm. The provided foam insert ensures damage-free storage.



DESCRIPTION	ARTICLE
SAUER Cylinder holder, 9-teilig	80220100

SAUER PRESSING CLAMP SET, 7-PIECE

The Sauer pressing clamp is designed for work directly on the vehicle and can be operated both manually and hydraulically.

Description:

- Internal length: 230 mm
- Socket thread 1: M42 × 2.0
- Socket thread 2: M42 × 2.0
- Max. load: 12 tonnes
- Weight: 6.6 kg



DESCRIPTION	ARTICLE
SAUER Pressing clamp set, 7-piece	81230300

SAUER DRIVE SET, MANUAL

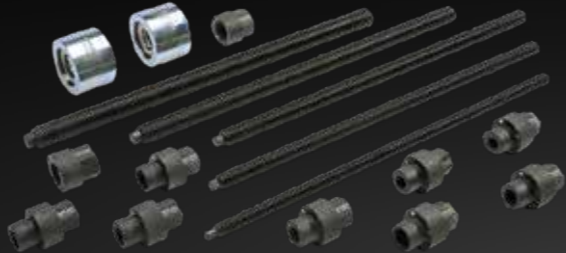
This basic set contains almost all components for manual tensioning and pressing work on wheel bearings, drive shafts, rubber bearings and supporting joints. The trapezoid thread used ensures long-term durability even under the highest loads. Naturally, the set perfectly matches the Sauer pressure and support sleeve sets, press frames, and pressing clamps.



DESCRIPTION	ARTICLE
SAUER Drive Set, manual	81231400

SEPARATING TIP, 3,8 MM

This drive set is designed for the manual changing of rubber bearings for axle suspension parts. Naturally, the set perfectly matches the Sauer pressure and support sleeve sets.



DESCRIPTION	ARTICLE
Separating tip, 3,8 mm	81231500

SAUER DRIVE SET FOR MANUAL TENSIONING AND PRESSING

This drive set is designed for the manual changing of wheel bearings and supporting joints, as well as for pressing out drive shafts. Naturally, the set perfectly matches the Sauer pressure and support sleeve sets.



DESCRIPTION	ARTICLE
SAUER Drive Set for Manual Tensioning and Pressing	81230400

SAUER PRESSURE AND SUPPORT SLEEVE SET, 18 – 78 MM, 54-PIECE

Universal pressure and support sleeve set with internal diameters of 18 to 78 mm and lengths of 40 mm, 100 mm, and 120 mm.

Ideal for removing and installing rubber bearings and supporting joints.

Contents:

- Pressure and support sleeves, \varnothing 18-78 mm, length 40 mm
- Pressure and support sleeves, \varnothing 26-70 mm, length 100 mm
- Pressure/support sleeves \varnothing 72-78 mm, length 120 mm



DESCRIPTION	ARTICLE
SAUER Pressure and Support Sleeve Set, 18 – 78 mm, 54-piece	81230200

SAUER PRESSURE AND SUPPORT SLEEVE SET, \varnothing 72-108 MM

Universal pressure and support sleeve set with internal diameters of 72 to 108 mm and lengths of 40 mm, 120 mm, and 150 mm.

Ideal for removing and installing rubber bearings and wheel bearings.

30-piece

Contents:

- Pressure/support sleeves \varnothing 72-100 mm, length 40 mm
- Pressure/support sleeves \varnothing 80-100 mm, length 120 mm
- Pressure/support sleeves \varnothing 102-108 mm, length 150 mm



DESCRIPTION	ARTICLE
SAUER Pressure and Support Sleeve Set, \varnothing 72-108 mm	81230000

SAUER PRESSURE AND SUPPORT SLEEVE SET, \varnothing 102-120 MM

Universal pressure and support sleeve set with internal diameters of 102 to 120 mm and lengths of 40 mm and 150 mm.

Ideal for commercial vehicles.

12-piece

Contents:

- Pressure/support sleeves \varnothing 102-112 mm, length 40 mm
- Pressure/support sleeves \varnothing 110-120 mm, length 150 mm



DESCRIPTION	ARTICLE
SAUER Pressure and Support Sleeve Set, \varnothing 102-120 mm	81230100

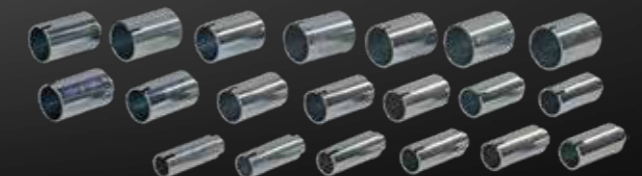
SAUER PRESSURE AND SUPPORT SLEEVE SET, \varnothing 30-68 MM

Comprehensive universal set for removing and installing rubber bearings and supporting joints.

20-piece

Contents:

- Pressure and support sleeves, \varnothing 30-68 mm, length 100 mm



DESCRIPTION	ARTICLE
SAUER Pressure and Support Sleeve Set, \varnothing 30-68 mm	81230700

TRANSMISSION / COUPLING

PAGE 21 – 26

SAUER TOOL KIT FOR VAG DOUBLE BEARING, 7-PIECE

This tool set is made to remove double bearings in a VAG 5-speed and 6-speed manual gearbox (02T, 02U, 0AF, 0AG, 0AJ, 0DF and 0DQ). The kit contains all tools to remove and install the double bearing and the drive and output shaft in the gearbox. Fits Audi, Seat, Skoda and VW.

Used equivalent to the following OE numbers:

- Pressure pad for double bearing, T10080
- Pressure pad for gear shafts, T10081
- Supporting block for gear shafts, T10083
- Shim, T10083/1
- Support plate, T10084A
- Pressure pad for gear shafts, T10085



DESCRIPTION	ARTICLE
SAUER Tool kit for VAG double bearing, 7-piece	81231900

SAUER PRESSURE PLATE, MODEL 1

for mounting or dismantling of bearings, pinions or CV joints during repair work on wheel bearings, suspension, drive shafts or gearboxes.

Dimensions:

- 200 x 150 x 14 mm
- Radii: \varnothing 32, 38, 50, 61

Used equivalent to OEM number VW401.



DESCRIPTION	ARTICLE
SAUER pressure plate, model 1	81231700

SAUER PRESSURE PLATE, MODEL 2

for mounting or dismantling of bearings, pinions or CV joints during repair work on wheel bearings, suspension, drive shafts or gearboxes.

Dimensions:

- 200 x 150 x 14 mm
- Radii: \varnothing 31, 50, 56, 83

Used equivalent to OE number VW402.



DESCRIPTION	ARTICLE
SAUER pressure plate, model 2	81231800

SAUER DRIVE SET, HYDRAULIC, 13-PIECE

This basic set is used as a hydraulic drive for almost all tensioning and press work on wheel bearings, drive shafts, rubber bearings and supporting joints. In combination with the Sauer press frames or the Sauer pressure pieces, this set is a must for any workshop.



DESCRIPTION	ARTICLE
SAUER drive set, hydraulic, 13-piece	80220033

SAUER BASIC SET WITH PRESS FRAME, 5-PIECE

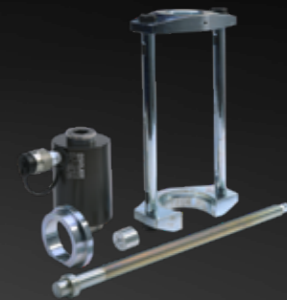
With universal press frame in closed design and 20 t hydraulic cylinder. Designed to fit universal pressure and support sleeves with 30 mm connectors.



DESCRIPTION	ARTICLE
SAUER Basic set with press frame, 5-piece	81230500

SAUER BASIC SET WITH PRESS FRAME

With press frame for vehicle pressure and support sleeves and 20 t hydraulic cylinder.



DESCRIPTION	ARTICLE
SAUER Basic Set with Press Frame	81230600

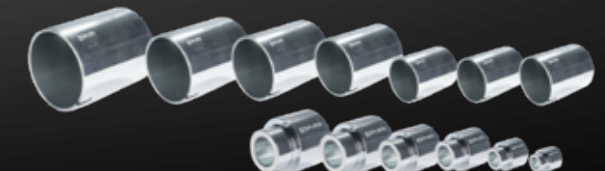
SAUER PRESSURE AND SUPPORT SLEEVE SET, 18 - 78 MM, 54-PIECE

Universal pressure and support sleeve set with internal diameters of 18 to 78 mm and lengths of 40 mm, 100 mm, and 120 mm.

Ideal for removing and installing rubber bearings and supporting joints.

Contents:

- Pressure and support sleeves, \varnothing 18-78 mm, length 40 mm
- Pressure and support sleeves, \varnothing 26-70 mm, length 100 mm
- Pressure/support sleeves \varnothing 72-78 mm, length 120 mm



DESCRIPTION	ARTICLE
SAUER Pressure and Support Sleeve Set, 18 - 78 mm, 54-piece	81230200

SAUER PRESSURE AND SUPPORT SLEEVE SET, Ø 72-108 MM

Universal pressure and support sleeve set with internal diameters of 72 to 108 mm and lengths of 40 mm, 120 mm, and 150 mm. Ideal for removing and installing rubber bearings and wheel bearings.

30-piece

Contents:

- Pressure/support sleeves Ø 72-100 mm, length 40 mm
- Pressure/support sleeves Ø 80-100 mm, length 120 mm
- Pressure/support sleeves Ø 102-108 mm, length 150 mm



DESCRIPTION	ARTICLE
SAUER Pressure and Support Sleeve Set, Ø 72-108 mm	81230000

SAUER PRESSURE AND SUPPORT SLEEVE SET, Ø 102-120 MM

Universal pressure and support sleeve set with internal diameters of 102 to 120 mm and lengths of 40 mm and 150 mm. Ideal for commercial vehicles.

12-piece

Contents:

- Pressure/support sleeves Ø 102-112 mm, length 40 mm
- Pressure/support sleeves Ø 110-120 mm, length 150 mm



DESCRIPTION	ARTICLE
SAUER Pressure and Support Sleeve Set, Ø 102-120 mm	81230100

SAUER PRESSURE AND SUPPORT SLEEVE SET, Ø 22-60 MM

Comprehensive universal set for removing and installing rubber bearings and supporting joints.

20-piece

Contents:

- Pressure and support sleeves, Ø 22-60 mm, length 40 mm



DESCRIPTION	ARTICLE
SAUER Pressure and Support Sleeve Set, Ø 22-60 mm	81230800

SAUER PRESSURE AND SUPPORT SLEEVE SET, Ø 22-82 MM

Comprehensive universal set for removing and installing rubber bearings and supporting joints.

31-piece

Contents:

- Pressure and support sleeves, Ø 22-82 mm, length 40 mm



DESCRIPTION	ARTICLE
SAUER Pressure and Support Sleeve Set, Ø 22-82 mm	81231200

SAUER PRESSURE AND SUPPORT SLEEVE SET, Ø 30-68 MM

Comprehensive universal set for removing and installing rubber bearings and supporting joints.

20-piece

Contents:

- Pressure and support sleeves, Ø 30-68 mm, length 100 mm



DESCRIPTION	ARTICLE
SAUER Pressure and Support Sleeve Set, Ø 30-68 mm	81230700

SAUER PRESSURE AND SUPPORT SLEEVE SET, 30-90 MM, 31-PIECE

Comprehensive universal set for removing and installing rubber bearings and supporting joints.

Contents:

- Pressure and support sleeves, Ø 30-70 mm, length 100 mm
- Pressure and support sleeves, Ø 72-90 mm, length 120 mm



DESCRIPTION	ARTICLE
SAUER Pressure and support sleeve set, 30-90 mm, 31-piece	81231100

SAUER PRESSING CLAMP SET, 7-PIECE

The Sauer pressing clamp is designed for work directly on the vehicle and can be operated both manually and hydraulically.

Description:

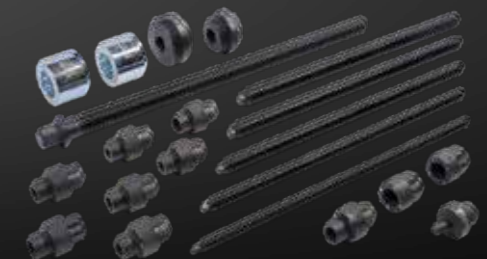
- Internal length: 230 mm
- Socket thread 1: M42 × 2.0
- Socket thread 2: M42 × 2.0
- Max. load: 12 tonnes
- Weight: 6.6 kg



DESCRIPTION	ARTICLE
SAUER Pressing clamp set, 7-piece	81230300

SAUER DRIVE SET, MANUAL

This basic set contains almost all components for manual tensioning and pressing work on wheel bearings, drive shafts, rubber bearings and supporting joints. The trapezoid thread used ensures long-term durability even under the highest loads. Naturally, the set perfectly matches the Sauer pressure and support sleeve sets, press frames, and pressing clamps.



DESCRIPTION	ARTICLE
SAUER Drive Set, manual	81231400

SEPARATING TIP, 3,8 MM

This drive set is designed for the manual changing of rubber bearings for axle suspension parts. Naturally, the set perfectly matches the Sauer pressure and support sleeve sets.



DESCRIPTION	ARTICLE
Separating tip, 3,8 mm	81231500

SAUER ALUMINIUM HYDRAULIC FOOT PUMP, 700 BAR

Small but powerful aluminium foot pump for operating the Sauer hydraulic cylinder incl. pressure gauge and high-pressure hydraulic hose. The low weight makes the pump very handy. Unlike with hand pumps, it leaves both hands free to operate the tool or cylinder.

Description:

- Aluminium hydraulic foot pump
- Incl. glycerine-filled pressure gauge
- Incl. high-pressure hydraulic hose with quick coupling, 2.50 metres
- Max. pressure: 700 bar
- Weight: 5.5 kg
- Dimensions without hose: 400 x 200 x 150 mm (L x W x H)



DESCRIPTION	ARTICLE
SAUER Aluminium Hydraulic Foot Pump, 700 bar	80210100

SAUER INTERNAL BEARING RING REMOVAL SET, 40-61 MM

Ideal for removing bearing rings that lie flat, which often remain on the hub when removing wheel bearings. Universal; for all vehicle types and internal bearing rings with an internal diameter of 35 - 55 mm.

- Jaw width: 40 - 61 mm



DESCRIPTION	ARTICLE
SAUER Internal Bearing Ring Removal Set, 40-61 mm	81231300

WHEEL BEARING TOOL

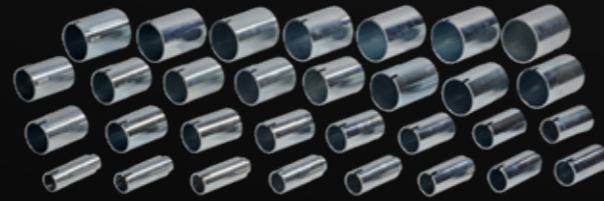
PAGE 42 - 51

SAUER PRESSURE AND SUPPORT SLEEVE SET, 30-90 MM, 31-PIECE

Comprehensive universal set for removing and installing rubber bearings and supporting joints.

Contents:

- Pressure and support sleeves, \varnothing 30-70 mm, length 100 mm
- Pressure and support sleeves, \varnothing 72-90 mm, length 120 mm



DESCRIPTION	ARTICLE
SAUER Pressure and support sleeve set, 30-90 mm, 31-piece	81231100

SAUER PRESSURE AND SUPPORT SLEEVE SET, \varnothing 22-60 MM

Comprehensive universal set for removing and installing rubber bearings and supporting joints.

20-piece

Contents:

- Pressure and support sleeves, \varnothing 22-60 mm, length 40 mm



DESCRIPTION	ARTICLE
SAUER Pressure and Support Sleeve Set, \varnothing 22-60 mm	81230800

SAUER PRESSURE AND SUPPORT SLEEVE SET, \varnothing 22-82 MM

Comprehensive universal set for removing and installing rubber bearings and supporting joints.

31-piece

Contents:

- Pressure and support sleeves, \varnothing 22-82 mm, length 40 mm



DESCRIPTION	ARTICLE
SAUER Pressure and Support Sleeve Set, \varnothing 22-82 mm	81231200

SAUER TOOL KIT FOR WHEEL HUBS, 23-PIECE

This tool set is made to remove wheel hubs. The included tension bolts cover the most common vehicle models with a bolt circle of 90 - 130 mm. The massive slide hammer with a 5 kg impact weight reliably removes the wheel hub. The foam insert offers additional space to add more tools to repair wheel hubs and CV joints.

Content:

- 4 nuts M14 with flange
- Slide hammer with a 5 kg impact weight and adapter to 2-1/4" - 14 UNS
- Tension disc for bolt circles of 90 - 130 mm, internal thread 2-1/4" - 14 UNS
- Tension bolts with external thread, 4pcs per size: M12x1,50 / M14x1,25 / M14x1,50



DESCRIPTION	ARTICLE
SAUER Tool kit for wheel hubs, 23-piece	80220500

SAUER TOOL KIT FOR DRIVE SHAFTS AND WHEEL HUBS, 39-PIECE

This tool set is made to remove fixed or glued drive shafts as well as wheel hubs. The tool set can be upgraded with optionally available manual or hydraulic drives.

Content:

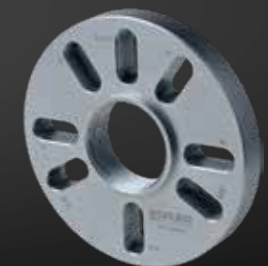
- Pressure mandrel 100 mm
- 4 nuts M14 with flange
- Tension disc for bolt circles of 90 - 130 mm, internal thread 2-1/4" - 14 UNS
- Tension bolts with external thread, 4pcs per size: M12x1,25 / M12x1,50 / M14x1,25 / M14x1,50
- Tension bolts with internal thread, 4pcs per size: M12x1,25 / M12x1,50 / M14x1,50 / M16x1,50
- Extension adapter for working with Sauer hydraulic cylinder



DESCRIPTION	ARTICLE
SAUER Tool kit for drive shafts and wheel hubs, 39-piece	80220300

SAUER PERFORATED DISC

for vehicles with 3-, 4-, 5- or 6-hole hubs and a bolt circle of 90 - 130 mm. Inside thread 2 1/4" - 14 UNS.



DESCRIPTION	ARTICLE
SAUER Perforated Disc	80220301
SAUER Perforated Disc	80220302

SAUER HEX NUT WITH FLANGE

for screwing tension bolts to the perforated disc.



DESCRIPTION	ARTICLE
SAUER hex Nut with flange	80220303

SAUER TENSION BOLT WITH EXTERNAL THREAD

Connects the wheel hub with the perforated disc. For wheel hubs with M12 x 1.25 wheel bolts



DESCRIPTION	ARTICLE
SAUER Tension Bolt with external thread	80220304
SAUER Tension Bolt with external thread	80220305
SAUER Tension Bolt with external thread	80220306
SAUER Tension Bolt with external thread	80220307
SAUER Tension Bolt with external thread	80220308
SAUER Tension Bolt with external thread	80220309

SAUER TENSION BOLT WITH INTERNAL THREAD

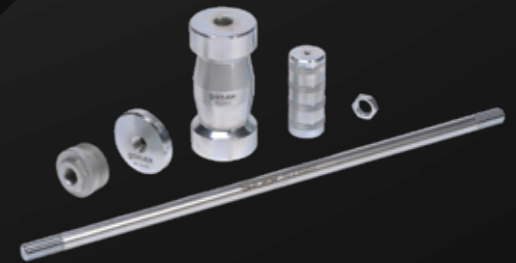
Connects the wheel hub with the perforated disc. For wheel hubs with M12 x 1.25 studs.



DESCRIPTION	ARTICLE
SAUER Tension Bolt with internal thread	80220310
SAUER Tension Bolt with internal thread	80220311
SAUER Tension Bolt with internal thread	80220312
SAUER Tension Bolt with internal thread	80220313
SAUER Tension Bolt with internal thread	80220314
SAUER Tension Bolt with internal thread	80220315
SAUER Tension Bolt with internal thread	80220316

SAUER SLIDE HAMMER WITH ADAPTER

The Sauer slide hammer is universally applicable and with the 5 kg heavy impact weight optimally suited to take off wheel hubs. The impact bar has a M20 thread and can be adapted to the usual thread size 2-1/4" - 1 1/4 UNS with an enclosed adapter. The foam insert offers additional space to add more tools to repair wheel hubs and CV joints.



DESCRIPTION	ARTICLE
SAUER Slide hammer with adapter	80220200

SAUER INTERNAL BEARING RING REMOVAL SET, 40-61 MM

Ideal for removing bearing rings that lie flat, which often remain on the hub when removing wheel bearings. Universal; for all vehicle types and internal bearing rings with an internal diameter of 35 - 55 mm.

- Jaw width: 40 - 61 mm



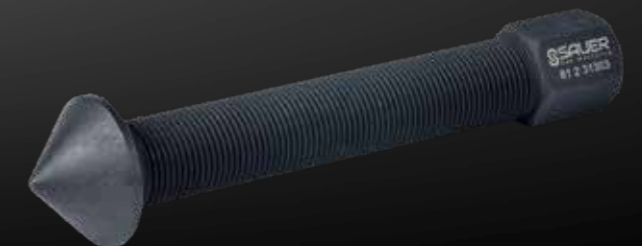
DESCRIPTION	ARTICLE
SAUER Internal Bearing Ring Removal Set, 40-61 mm	81231300

SAUER RING SPANNER Ø 58,9 MM



DESCRIPTION	ARTICLE
SAUER Ring Spanner ø 58.9 mm	81231301
SAUER Ring Spanner ø 82.7 mm	81231302

SAUER PRESSURE SPINDLE WITH CONE, M20 X 1,5



DESCRIPTION	ARTICLE
SAUER Pressure Spindle with Cone, M20 x 1.5	81231303

SAUER REMOVER HOUSING



DESCRIPTION	ARTICLE
SAUER Remover Housing	81231304

SAUER REMOVER SOCKET Ø 40-45 MM



DESCRIPTION	ARTICLE
SAUER Remover Socket ø 40-45 mm	81231305
SAUER Remover Socket ø 45-51 mm	81231306
SAUER Remover Socket ø 50-55 mm	81231307
SAUER Remover Socket ø 55-61 mm	81231308

SAUER PRESSURE PLATE, MODEL 1

for mounting or dismantling of bearings, pinions or CV joints during repair work on wheel bearings, suspension, drive shafts or gearboxes.

Dimensions:

- 200 x 150 x 14 mm
- Radii: ø 32, 38, 50, 61

Used equivalent to OEM number VW401.



DESCRIPTION	ARTICLE
SAUER pressure plate, model 1	81231700

SAUER PRESSURE PLATE, MODEL 2

for mounting or dismantling of bearings, pinions or CV joints during repair work on wheel bearings, suspension, drive shafts or gearboxes.

Dimensions:

- 200 x 150 x 14 mm
- Radii: ø 31, 50, 56, 83

Used equivalent to OE number VW402.



DESCRIPTION	ARTICLE
SAUER pressure plate, model 2	81231800

SAUER RECEIVING RING

for screwing into SAUER supporting sleeve 81 2 00108 and receiving hydraulic or manual tools during work on wheel bearings.

- External thread: M92 x 1,5
- Internal thread: M42 x 2
- Ball bearing for manual shaft



DESCRIPTION	ARTICLE
SAUER Receiving Ring	81200101

SAUER SUPPORTING RING, 70 MM

for screwing into SAUER supporting sleeve 81 2 00108. The supporting ring reduces the diameter to the given size.

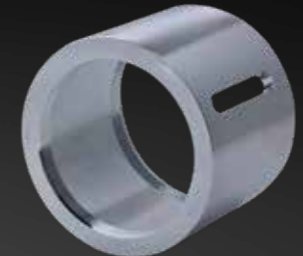


DESCRIPTION	ARTICLE
SAUER Supporting Ring, 70 mm	81200102
SAUER Supporting Ring, 75 mm	81200103
SAUER Supporting Ring, 80 mm	81200104
SAUER Supporting Ring, 85 mm	81200105
SAUER Supporting Ring, 90 mm	81200106

SAUER SUPPORTING SLEEVE

used to support the wheel bearing when changing wheel bearings. Can only be used in connection with SAUER Receiving Ring 81 2 00101

- Internal diameter: 100.5 mm
- Internal length: 80 mm
- Total length: 90 mm



DESCRIPTION	ARTICLE
SAUER Supporting Sleeve	81200108

SAUER PRESSURE ADAPTER

for hydraulic feed shafts.

For receiving pressure/supporting sleeves during hydraulic tasks..



DESCRIPTION	ARTICLE
SAUER Pressure Adapter	81200110

SAUER CENTERING RING, 25 MM

for centering the support shaft when changing wheel bearings.



DESCRIPTION	ARTICLE
SAUER Centering Ring, 25 mm	81200125
SAUER Centering Ring, 26 mm	81200126
SAUER Centering Ring, 27 mm	81200127
SAUER Centering Ring	81200128
SAUER Centering Ring, 29 mm	81200129
SAUER Centering Ring, 30 mm	81200130
SAUER Centering Ring, 31 mm	81200131
SAUER Centering Ring, 32 mm	81200132
SAUER Centering Ring, 33 mm	81200133
SAUER Centering Ring, 34 mm	81200134
SAUER Centering Ring, 35 mm	81200135
SAUER Centering Ring, 36 mm	81200136
SAUER Centering Ring, 37 mm	81200137
SAUER Centering Ring, 38 mm	81200138
SAUER Centering Ring, 39 mm	81200139
SAUER Centering Ring, 40 mm	81200140
SAUER Centering Ring, 41 mm	81200141
SAUER Centering Ring, 42 mm	81200142
SAUER Centering Ring, 43 mm	81200143
SAUER Centering Ring, 44 mm	81200144
SAUER Centering Ring, 45 mm	81200145
SAUER Centering Ring, 46 mm	81200146
SAUER Centering Ring, 47 mm	81200147
SAUER Centering Ring, 48 mm	81200148
SAUER Centering Ring, 49 mm	81200149
SAUER Centering ring, 50 mm	81200150
SAUER Centering Ring, 51 mm	81200151
SAUER Centering Ring, 52 mm	81200152
SAUER Centering Ring, 53 mm	81200153
SAUER Centering Ring, 54 mm	81200154
SAUER Centering Ring, 55 mm	81200155
SAUER Centering Ring, 56 mm	81200156
SAUER Centering Ring, 57 mm	81200157
SAUER Centering Ring, 58 mm	81200158
SAUER Centering Ring, 59 mm	81200159
SAUER Centering Ring, 60 mm	81200160

SAUER PRESSURE RING, 61 MM

for pressing out the wheel bearing.



DESCRIPTION	ARTICLE
SAUER Pressure Ring, 61 mm	81200161
SAUER Pressure Ring, 62 mm	81200162
SAUER Pressure Ring, 63 mm	81200163
SAUER Pressure Ring, 64 mm	81200164

SAUER PRESSURE RING, MM

for pressing out the wheel bearing. The pressure ring is flattened on one side, so there is no need to remove any ABS sensors present.



DESCRIPTION	ARTICLE
SAUER Pressure Ring, 65 mm	81200165
SAUER Pressure Ring, 66 mm	81200166
SAUER Pressure Ring, 67 mm	81200167
SAUER Pressure Ring, 68 mm	81200168
SAUER Pressure Ring, 69 mm	81200169
SAUER Pressure Ring, 70 mm	81200170
SAUER Pressure Ring, 71 mm	81200171
SAUER Pressure Ring, 72 mm	81200172
SAUER Pressure Ring, 73 mm	81200173
SAUER Pressure Ring, 74 mm	81200174
SAUER Pressure Ring, 75 mm	81200175
SAUER Pressure Ring, 76 mm	81200176
SAUER Pressure Ring, 77 mm	81200177
SAUER Pressure Ring, 78 mm	81200178
SAUER Pressure Ring, 79 mm	81200179
SAUER Pressure Ring, 80 mm	81200180
SAUER Pressure Ring, 81 mm	81200181
SAUER Pressure Ring, 82 mm	81200182
SAUER Pressure Ring, 83 mm	81200183
SAUER Pressure Ring, 84 mm	81200184
SAUER Pressure Ring, 85 mm	81200185
SAUER Pressure Ring, 86 mm	81200186
SAUER Pressure Ring	81200187
SAUER Pressure Ring, 88 mm	81200188
SAUER Pressure Ring, 89 mm	81200189
SAUER Pressure Ring, 90 mm	81200190
SAUER Pressure Ring, 91 mm	81200191
SAUER Pressure Ring, 92 mm	81200192
SAUER Pressure Ring, 93 mm	81200193
SAUER Pressure Ring, 95 mm	81200194
SAUER Pressure Ring, 95 mm	81200195
SAUER Pressure Ring, 96 mm	81200196
SAUER Pressure Ring, 97 mm	81200197
SAUER Pressure Ring, 98 mm	81200198
SAUER Pressure Ring, 99 mm	81200199



JOINT TOOL

PAGE 52 - 59

SAUER TOOL KIT FOR DRIVE SHAFTS, 42-PIECE

This tool set is made to remove fixed or glued drive shafts. The trapezoidal thread on the enclosed pressure spindle is designed for the highest demands and is ideally suited for this purpose. Optionally working with the Sauer hydraulic cylinder is also possible.

Content:

- 4 nuts M14 with flange
- Pressure spindle TR20 with adapter to 2-1/4" - 14 UNS
- Tension disc for bolt circles of 90 - 130 mm, internal thread 2-1/4" - 14 UNS
- Tension bolts with external thread, 4pcs per size: M12x1,25 / M12x1,50 / M14x1,25 / M14x1,50
- Tension bolts with internal thread, 4pcs per size: M12x1,25 / M12x1,50 / M14x1,50 / M16x1,50
- Extension adapter for working with Sauer hydraulic cylinder



DESCRIPTION	ARTICLE
SAUER Tool kit for drive shafts, 42-piece	80220400

SAUER TOOL KIT FOR DRIVE SHAFTS AND WHEEL HUBS, 39-PIECE

This tool set is made to remove fixed or glued drive shafts as well as wheel hubs. The tool set can be upgraded with optionally available manual or hydraulic drives.

Content:

- Pressure mandrel 100 mm
- 4 nuts M14 with flange
- Tension disc for bolt circles of 90 - 130 mm, internal thread 2-1/4" - 14 UNS
- Tension bolts with external thread, 4pcs per size: M12x1,25 / M12x1,50 / M14x1,25 / M14x1,50
- Tension bolts with internal thread, 4pcs per size: M12x1,25 / M12x1,50 / M14x1,50 / M16x1,50
- Extension adapter for working with Sauer hydraulic cylinder



DESCRIPTION	ARTICLE
SAUER Tool kit for drive shafts and wheel hubs, 39-piece	80220300

SAUER PRESSURE MANDREL, 100 MM

pressure mandrel, 100 mm



DESCRIPTION	ARTICLE
SAUER Pressure Mandrel, 100 mm	81200097
SAUER Pressure Mandrel, 25 mm	81200098

SAUER PERFORATED DISC

for vehicles with 3-, 4-, 5- or 6-hole hubs and a bolt circle of 90 - 130 mm. Inside thread 2 1/4" - 14 UNS.



DESCRIPTION	ARTICLE
SAUER Perforated Disc	80220301
SAUER Perforated Disc	80220302

SAUER TENSION BOLT WITH EXTERNAL THREAD

Connects the wheel hub with the perforated disc. For wheel hubs with M12 x 1.25 wheel bolts



DESCRIPTION	ARTICLE
SAUER Tension Bolt with external thread	80220304
SAUER Tension Bolt with external thread	80220305
SAUER Tension Bolt with external thread	80220306
SAUER Tension Bolt with external thread	80220307
SAUER Tension Bolt with external thread	80220308
SAUER Tension Bolt with external thread	80220309

SAUER TENSION BOLT WITH INTERNAL THREAD

Connects the wheel hub with the perforated disc. For wheel hubs with M12 x 1.25 studs.



DESCRIPTION	ARTICLE
SAUER Tension Bolt with internal thread	80220310
SAUER Tension Bolt with internal thread	80220311
SAUER Tension Bolt with internal thread	80220312
SAUER Tension Bolt with internal thread	80220313
SAUER Tension Bolt with internal thread	80220314
SAUER Tension Bolt with internal thread	80220315
SAUER Tension Bolt with internal thread	80220316

SAUER DRIVE SET, HYDRAULIC, 13-PIECE

This basic set is used as a hydraulic drive for almost all tensioning and press work on wheel bearings, drive shafts, rubber bearings and supporting joints. In combination with the Sauer press frames or the Sauer pressure pieces, this set is a must for any workshop.



DESCRIPTION	ARTICLE
SAUER drive set, hydraulic, 13-piece	80220033

SAUER DRIVE SET FOR MANUAL TENSIONING AND PRESSING

This drive set is designed for the manual changing of wheel bearings and supporting joints, as well as for pressing out drive shafts. Naturally, the set perfectly matches the Sauer pressure and support sleeve sets.



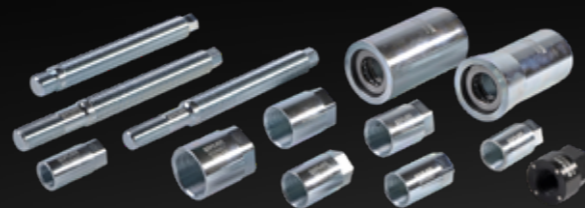
DESCRIPTION	ARTICLE
SAUER Drive Set for Manual Tensioning and Pressing	81230400

SAUER TOOL KIT FOR DRIVE SHAFTS, 13-PIECE

This tool set is made to insert fixed or glued drive shafts into wheel hubs. The kit includes threaded sleeves for CV joints with external thread from M16 to M30 as well as tension bolts for CV joints with internal thread of M14 and M16.

Content:

- Support sleeves with bearing, \varnothing 39 mm and \varnothing 46 mm
- Pulling sleeves M16, M18, M20, M22, M24, M27, M30
- Pulling bolt for pull sleeves
- Tension bolt with external thread, M14 and M16
- Tension nut



DESCRIPTION	ARTICLE
SAUER Tool kit for drive shafts, 13-piece	80220600

SAUER PRESSURE PLATE, MODEL 1

for mounting or dismantling of bearings, pinions or CV joints during repair work on wheel bearings, suspension, drive shafts or gearboxes.

Dimensions:

- 200 x 150 x 14 mm
- Radii: \varnothing 32, 38, 50, 61

Used equivalent to OEM number VW401.



DESCRIPTION	ARTICLE
SAUER pressure plate, model 1	81231700

SAUER PRESSURE PLATE, MODEL 2

for mounting or dismantling of bearings, pinions or CV joints during repair work on wheel bearings, suspension, drive shafts or gearboxes.

Dimensions:

- 200 x 150 x 14 mm
- Radii: \varnothing 31, 50, 56, 83

Used equivalent to OE number VW402.



DESCRIPTION	ARTICLE
SAUER pressure plate, model 2	81231800

SAUER SLIDE BAR

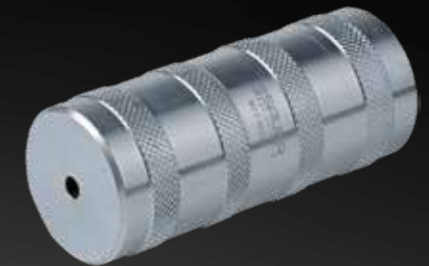
- Length: 630 mm
- Thread: M20 x 1.5



DESCRIPTION	ARTICLE
SAUER Slide Bar	80220201

SAUER HANDLE

for screwing to slide bar 80 2 20201.



DESCRIPTION	ARTICLE
SAUER Handle	80220202

SAUER IMPACT WEIGHT

WEIGHT: 5 kg



DESCRIPTION	ARTICLE
SAUER IMPACT Weight	80220203

HEXAGON NUT, M20 X 1.5

Nut for sliding bar.



DESCRIPTION	ARTICLE
Hexagon nut, M20 x 1.5	80220204

SAUER ADAPTER

for screwing to slide bar 80 2 20201 and for use as a connector to SAUER tool set for wheel hubs..



DESCRIPTION	ARTICLE
SAUER Adapter	80220205

SAUER BATTER BLADE

for screwing to slide bar 80 2 20201.



DESCRIPTION	ARTICLE
SAUER Batter Blade	80220206

SAUER SUPPORTING SLEEVE, 39 MM

for pulling the drive shaft into the wheel hub
With roller bearings



DESCRIPTION	ARTICLE
SAUER Supporting Sleeve, 39 mm	80220602
SAUER Supporting Sleeve, 46 mm	80220604

SAUER DRIVE SHAFT PULLER SLEEVE, M16 X 1,50

for screwing to the drive shaft and, subsequently, pulling into the wheel hub.

Can only be used in connection with 80 2 20612..



DESCRIPTION	ARTICLE
SAUER Drive Shaft Puller Sleeve, M16 x 1,50	80220605
SAUER Drive Shaft Puller Sleeve, M18 x 1,50	80220606
SAUER Drive Shaft Puller Sleeve, M20 x 1,5	80220607
SAUER Drive Shaft Puller Sleeve, M22 x 1,50	80220608
SAUER Drive Shaft Puller Sleeve, M24 x 1,50	80220609
SAUER Drive Shaft Puller Sleeve, M27 x 1,50	80220610
SAUER Drive Shaft Puller Sleeve, M30 x 1,50	80220611

SAUER DRIVE SHAFT TENSION BOLT, M14 X 1,50

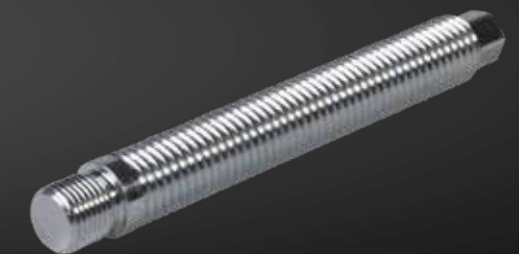
for drive shafts with corresponding inner thread.



DESCRIPTION	ARTICLE
SAUER Drive Shaft Tension Bolt, M14 x 1,5	80220613
SAUER Drive Shaft Tension Bolt, M16 x 1,50	80220614

SAUER TENSION BOLT FOR PULLER SLEEVES

Can only be used in connection with puller sleeves 80 2 20605 to 80 2 20611.



DESCRIPTION	ARTICLE
SAUER Tension Bolt for puller sleeves	80220612



RUBBER BEARING TOOL

PAGE 60 - 63

SAUER RUBBER BEARING TOOL VAG

for the removal and installation of the rubber bearing on the console mule without removing the console (front axle 62 mm diameter)

Suitable for:

- Audi A2,00 - ,05
- Seat Cordoba 6L,02 - ,09, Ibiza 6L,02 - ,09
- Škoda Fabia 6Y,99 - ,08, Roomster 5J,06 - ,08
- VW Fox 5Z,05 - ,12, Polo 9N,01 - ,09

As well as for bearing bracket (removal necessary) to:

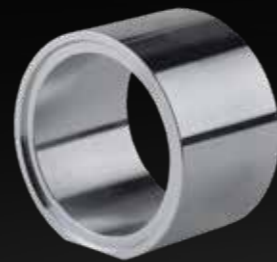
- Audi A3 8P,03 - ,13
- Seat Altea 5P,04 - ,15, Leon 1P,05 - ,13, Toledo 5P,04 - ,09
- Škoda Octavia 1Z,04 - ,13, Superb 3T,08 - ,10, Yeti 5L,09 - ,10
- VW Caddy III 2K,03 - ,10, Eos 1F,06 --, Golf V 1K,03 - ,10, Golf VI 5K,08 - ,13, Golf Plus 5M,05 - ,14, Scirocco 13,08 --, Jetta III 1K,05 - ,10, Passat 3C,05 - ,15, Touran 1T1,03 - ,10, Touran 1T3,10 - ,15, Tiguan 5N,07 - ,16



DESCRIPTION
SAUER rubber bearing tool VAG

ARTICLE
81110400

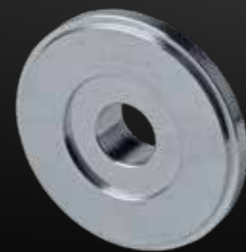
SAUER PRESSURE SLEEVE Ø 90 MM



DESCRIPTION
SAUER Pressure Sleeve Ø 90 mm

ARTICLE
81110401

SAUER PRESSURE PIECE Ø 61,4 MM



DESCRIPTION
SAUER Pressure Piece Ø 61,4 mm

ARTICLE
81110402

SAUER PRESSURE PIECE Ø 70 / 16 MM



DESCRIPTION
SAUER Pressure Piece Ø 70 / 16 mm

ARTICLE
81110404

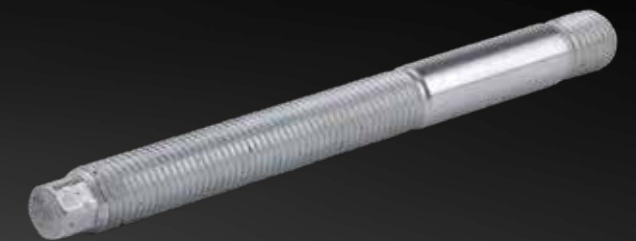
SAUER PRESSURE PAD Ø 90 / 16,5 MM



DESCRIPTION
SAUER Pressure pad Ø 90 / 16,5 mm

ARTICLE
81110407

SAUER TENSION BOLT M16 X 180 MM



DESCRIPTION
SAUER Tension Bolt M16 x 180 mm

ARTICLE
81110502

SAUER BALL BEARING 20 X 35 MM



DESCRIPTION
SAUER Ball Bearing 20 x 35 mm

ARTICLE
81110410

GEARS

PAGE 64 - 68

SAUER TOOL KIT FOR VAG DOUBLE BEARING, 7-PIECE

This tool set is made to remove double bearings in a VAG 5-speed and 6-speed manual gearbox (02T, 02U, 0AF, 0AG, 0AJ, 0DF and 0DQ). The kit contains all tools to remove and install the double bearing and the drive and output shaft in the gearbox. Fits Audi, Seat, Skoda and VW.

Used equivalent to the following OE numbers:

- Pressure pad for double bearing, T10080
- Pressure pad for gear shafts, T10081
- Supporting block for gear shafts, T10083
- Shim, T10083/1
- Support plate, T10084A
- Pressure pad for gear shafts, T10085



DESCRIPTION	ARTICLE
SAUER Tool kit for VAG double bearing, 7-piece	81231900

SAUER PRESSURE PLATE, MODEL 1

for mounting or dismantling of bearings, pinions or CV joints during repair work on wheel bearings, suspension, drive shafts or gearboxes.

Dimensions:

- 200 x 150 x 14 mm
- Radii: \varnothing 32, 38, 50, 61

Used equivalent to OEM number VW401.



DESCRIPTION	ARTICLE
SAUER pressure plate, model 1	81231700

SAUER PRESSURE PLATE, MODEL 2

for mounting or dismantling of bearings, pinions or CV joints during repair work on wheel bearings, suspension, drive shafts or gearboxes.

Dimensions:

- 200 x 150 x 14 mm
- Radii: \varnothing 31, 50, 56, 83

Used equivalent to OE number VW402.



DESCRIPTION	ARTICLE
SAUER pressure plate, model 2	81231800

SAUER DOUBLE BEARING PRESSURE PIECE

for use while pressing the gear shafts into the double bearing.

used in the same way as T10080.



DESCRIPTION	ARTICLE
SAUER Double Bearing Pressure Piece	81231901

SAUER GEAR SHAFT PRESSURE PIECE

for use while pressing the gear shafts into the double bearing.

used in the same way as T10081.

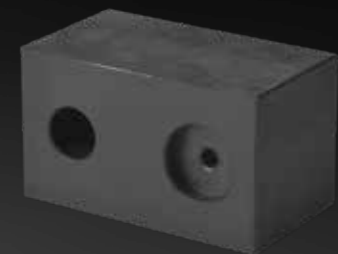


DESCRIPTION	ARTICLE
SAUER Gear Shaft Pressure Piece	81231902

SAUER GEAR SHAFT SUPPORT BLOCK

for use while pressing the gear shafts into the double bearing.

used in the same way as T10083.



DESCRIPTION	ARTICLE
SAUER Gear Shaft Support Block	81231903

SAUER SPACER DISK

for use while pressing the gear shafts into the double bearing.

used in the same way as T10083/1.



DESCRIPTION	ARTICLE
SAUER Spacer Disk	81231904

SAUER SUPPORTING PLATE

for receiving the double bearing when pressing out.

used in the same way as T10084A.



DESCRIPTION	ARTICLE
SAUER Supporting Plate	81231905

SAUER GEAR SHAFT PRESSURE PIECE

for pressing the gear shafts out of the double bearing.

used in the same way as T10085.



DESCRIPTION	ARTICLE
SAUER Gear Shaft Pressure Piece	81231906



**HYDRAULIC
TOOL**

PAGE 69 - 72

SAUER ALUMINIUM HYDRAULIC CYLINDER, 20 T

High-performance hydraulic cylinder with a max. pressing force of 20 tonnes. The hydraulic cylinder is made of steel and aluminium, and currently **lightest** hydraulic cylinder on the market at 3.4 kg.

Description:

- Hollow piston cylinder with quick coupling and aluminium thread protector
- Maximum force: 20 t
- Socket for threaded spindle: M20 × 2.5
- Screw thread on pressure side: 2 1/4" - 14 UNS
- Screw thread on tensioning side: M42 × 2.0
- Stroke: 50 mm
- Weight: 3.4 kg
- Dimensions: ø 89 mm × 160 mm



DESCRIPTION	ARTICLE
SAUER Aluminium hydraulic cylinder, 20 t	80210000

SAUER QUICK COUPLING FOR HYDRAULIC CYLINDER

Sauer quick coupling with 3/8" NPT connecting thread.

Suitable for the hydraulic cylinder 80210000.



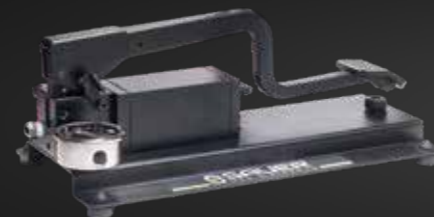
DESCRIPTION	ARTICLE
SAUER Quick Coupling for Hydraulic Cylinder	80210001

SAUER ALUMINIUM HYDRAULIC FOOT PUMP, 700 BAR

Small but powerful aluminium foot pump for operating the Sauer hydraulic cylinder incl. pressure gauge and high-pressure hydraulic hose. The low weight makes the pump very handy. Unlike with hand pumps, it leaves both hands free to operate the tool or cylinder.

Description:

- Aluminium hydraulic foot pump
- Incl. glycerine-filled pressure gauge
- Incl. high-pressure hydraulic hose with quick coupling, 2.50 metres
- Max. pressure: 700 bar
- Weight: 5.5 kg
- Dimensions without hose: 400 × 200 × 150 mm (L × W × H)



DESCRIPTION	ARTICLE
SAUER Aluminium Hydraulic Foot Pump, 700 bar	80210100

SAUER REPLACEMENT PRESSURE GAUGE

Replacement pressure gauge with 3/8" NPT connecting thread. Fits the Sauer hydraulic foot pump 80 2 10100.

Description:

- Display is rotated 90°
- Incl. glycerine filling for damping indicator needle
- Pressure gauge diameter: 62 mm
- Connecting thread: 3/8" NPT
- Display: 0 to 1000 bar / 0 to 14000 psi



DESCRIPTION	ARTICLE
SAUER Replacement Pressure Gauge	80210101

SAUER REPLACEMENT HYDRAULIC HOSE

Replacement hydraulic hose with 3/8" NPT connecting thread and quick coupling.

Fits the Sauer hydraulic foot pump 80 2 10100.

Description:

- Polyurethane hose reinforced with steel wire
- Pressure-resistant up to: 1000 bar
- Bursting pressure: 2800 bar

Length: 2.50 metres



DESCRIPTION	ARTICLE
SAUER Replacement Hydraulic Hose	80210102

SAUER DRIVE SET, HYDRAULIC, 13-PIECE

This basic set is used as a hydraulic drive for almost all tensioning and press work on wheel bearings, drive shafts, rubber bearings and supporting joints. In combination with the Sauer press frames or the Sauer pressure pieces, this set is a must for any workshop.



DESCRIPTION	ARTICLE
SAUER drive set, hydraulic, 13-piece	80220033

SAUER BASIC SET WITH PRESS FRAME, 5-PIECE

With universal press frame in closed design and 20 t hydraulic cylinder. Designed to fit universal pressure and support sleeves with 30 mm connectors.



DESCRIPTION	ARTICLE
SAUER Basic set with press frame, 5-piece	81230500

SAUER BASIC SET WITH PRESS FRAME

With press frame for vehicle pressure and support sleeves and 20 t hydraulic cylinder.



DESCRIPTION	ARTICLE
SAUER Basic Set with Press Frame	81230600

SAUER PRESSURE AND SUPPORT SLEEVE SET, HYDRAULIC

Universal pressure and support sleeve set with internal diameters of 22 to 68 mm and lengths of 40 mm and 100 mm, incl. hydraulic cylinder and press frame.



DESCRIPTION	ARTICLE
SAUER Pressure and support sleeve set, hydraulic	81230900

SAUER CYLINDER HOLDER, 9-TEILIG

This cylinder holder made of aluminium can be deployed rapidly and is highly flexible. The Sauer adapter plates and/or press frames are fitted with an additional holder, which can be quickly and easily inserted into the holding device of the cylinder holder and locked in place. The holding device can be rotated and fixed in place in any position with a locking handle. The cylinder holder may be mounted on any standard transmission jack with a \varnothing 30 mm piston rod. Adapters for transmission jacks with \varnothing 25 mm and \varnothing 36 mm piston rods can be added at any time.

The scope of delivery of the set also includes screw-on holders for Sauer press frames and adapter plates, as well as a socket for transmission jacks with a piston rod diameter of 30 mm. The provided foam insert ensures damage-free storage.



DESCRIPTION	ARTICLE
SAUER Cylinder holder, 9-teilig	80220100

SAUER RETAINING TUBE \varnothing 25 MM

For cylinder holder 80220100



DESCRIPTION	ARTICLE
SAUER Retaining Tube \varnothing 25 mm	80220101
SAUER Retaining Tube \varnothing 36 mm	80220103
SAUER Pressing Clamp Holder	80220114



**MANUAL
TOOL**

PAGE 73 - 78

SAUER PRESSURE AND SUPPORT SLEEVE SET, MANUAL

Universal pressure and support sleeve set with internal diameters of 22 to 68 mm and lengths of 40 mm and 100 mm, incl. manual pressure spindle, socket adapter, and press frame.



DESCRIPTION	ARTICLE
SAUER Pressure and Support Sleeve Set, Manual	81231600

SAUER PRESSING CLAMP SET, 7-PIECE

The Sauer pressing clamp is designed for work directly on the vehicle and can be operated both manually and hydraulically.

Description:

- Internal length: 230 mm
- Socket thread 1: M42 × 2.0
- Socket thread 2: M42 × 2.0
- Max. load: 12 tonnes
- Weight: 6.6 kg



DESCRIPTION	ARTICLE
SAUER Pressing clamp set, 7-piece	81230300

SAUER PRESSING CLAMP

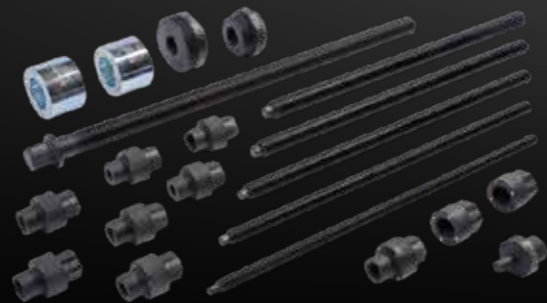
press tool



DESCRIPTION	ARTICLE
SAUER Pressing Clamp	81230301

SAUER DRIVE SET, MANUAL

This basic set contains almost all components for manual tensioning and pressing work on wheel bearings, drive shafts, rubber bearings and supporting joints. The trapezoid thread used ensures long-term durability even under the highest loads. Naturally, the set perfectly matches the Sauer pressure and support sleeve sets, press frames, and pressing clamps.



DESCRIPTION	ARTICLE
SAUER Drive Set, manual	81231400

SEPARATING TIP, 3,8 MM

This drive set is designed for the manual changing of rubber bearings for axle suspension parts. Naturally, the set perfectly matches the Sauer pressure and support sleeve sets.



DESCRIPTION	ARTICLE
Separating tip, 3,8 mm	81231500

SAUER DRIVE SET FOR MANUAL TENSIONING AND PRESSING

This drive set is designed for the manual changing of wheel bearings and supporting joints, as well as for pressing out drive shafts. Naturally, the set perfectly matches the Sauer pressure and support sleeve sets.



DESCRIPTION	ARTICLE
SAUER Drive Set for Manual Tensioning and Pressing	81230400

SAUER PRESSURE MANDREL, 100 MM

pressure mandrel, 100 mm



DESCRIPTION	ARTICLE
SAUER Pressure Mandrel, 100 mm	81200097
SAUER Pressure Mandrel, 25 mm	81200098

SAUER FEED SHAFT TR10 × 1.5 × 350 MM

For manual tensioning work.



DESCRIPTION	ARTICLE
SAUER Feed Shaft TR10 × 1.5 × 350 mm	80220054
SAUER Feed Shaft TR12 × 2.0 × 350 mm	80220055
SAUER Feed Shaft TR14 × 2.0 × 350 mm	80220056
SAUER Feed Shaft TR16 × 2.0 × 350 mm	80220057
SAUER Feed Shaft TR18 × 2.0 × 350 mm	80220058

SAUER NUT TR10 × 1.5

For TR10 × 1.5 manual feed rod with magnetic system and guide



DESCRIPTION	ARTICLE
SAUER Nut TR10 × 1.5	80220062
SAUER Nut TR12 × 2.0	80220063
SAUER Nut TR14 × 2.0	80220064
SAUER Nut TR16 × 2.0	80220065
SAUER Nut TR18 × 2.0	80220066

SAUER BEARING ADAPTER

The bearing adapter is required when working with manual spindles.
The included axial ball bearing ensures low friction even when used under high loads.
With Sauer magnetic system.



DESCRIPTION	ARTICLE
SAUER Bearing Adapter	80220061

SAUER ADAPTER FOR PRESSURE PIECES WITH Ø 30 MM SOCKET

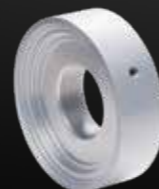
adapter for pressure pads with Ø 30 mm mount



DESCRIPTION	ARTICLE
SAUER adapter for pressure pieces with Ø 30 mm socket	80220046

SAUER ADAPTER FOR VEHICLE PRESSURE PIECES

With M42 thread. Fits hydraulic cylinder 80210000.



DESCRIPTION	ARTICLE
SAUER Adapter for vehicle pressure pieces	80220003

SAUER ADAPTER FOR PRESSURE PIECES WITH Ø 35 MM SOCKET

adapter for pressure pads with Ø 35 mm mount



DESCRIPTION	ARTICLE
SAUER Adapter for Pressure Pieces with Ø 35 mm Socket	81200096

SAUER RETAINING TUBE Ø 30 MM

for cylinder holder 80220100



DESCRIPTION	ARTICLE
SAUER Retaining Tube ø 30 mm	80220102

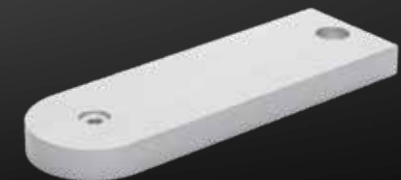
SAUER CARRIER PLATE



DESCRIPTION	ARTICLE
SAUER carrier plate	80220104

SAUER SIDE WEB

for cylinder holder 80220100



DESCRIPTION	ARTICLE
SAUER side web	80220105

SAUER CYLINDER MOUNT



DESCRIPTION	ARTICLE
SAUER cylinder mount	80220106

SAUER CYLINDER ADAPTER



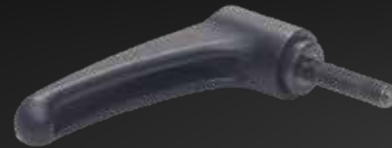
DESCRIPTION	ARTICLE
SAUER Cylinder Adapter	80220107

SAUER CAP



DESCRIPTION	ARTICLE
SAUER cap	80220108

SAUER GANTER HANDLE



DESCRIPTION	ARTICLE
SAUER ganter handle	80220109

SAUER THUMBSCREW



DESCRIPTION	ARTICLE
Thumbscrew	80220110



**PRESS FRAME /
PRESSING CLAMP**

PAGE 79 - 83

SAUER PRESS FRAME, CLOSED DESIGN, 2-PIECE

Sturdy press frame in closed design made of high-strength tempered steel. The enclosed threaded sleeve is designed for pressure pieces with \varnothing 30 mm mounts and equipped with the Sauer magnet system. The height can be easily adjusted using the threaded sleeve.

Description:

- Internal width: 130 mm
- Internal length: 300 mm
- Socket thread 1: 2 1/4" - 14 UNS
- Socket thread 2: M42 x 2.0
- Max. load: 17 tonnes
- Weight: 5.5 kg



DESCRIPTION	ARTICLE
SAUER Press frame, closed design, 2-piece	80220047

SAUER PRESS FRAME, OPEN DESIGN

Sturdy press frame in an open design to accommodate pressure and support sleeve sets for vehicles. Both the frame and the adapter ring supplied are equipped with the Sauer magnetic system. Fast, maintenance-free holding of the pressure pieces is thereby guaranteed.

Description:

- Internal width: 130 mm
- Internal length: 300 mm
- Socket thread 1: 2 1/4" - 14 UNS
- Socket thread 2: Open socket with adapter ring
- Max. load: 17 tonnes
- Weight: 5.3 kg



DESCRIPTION	ARTICLE
SAUER Press Frame, Open Design	80220032

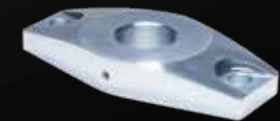
SAUER THREADED SLEEVE

Necessary for conversion to a closed press frame



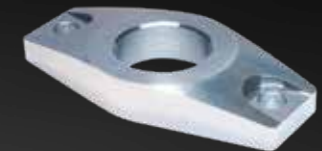
DESCRIPTION	ARTICLE
SAUER Threaded Sleeve	80220036

SAUER PRESS BRIDGE M42 X 2,0



DESCRIPTION	ARTICLE
SAUER Press Bridge M42 x 2.0	80220044

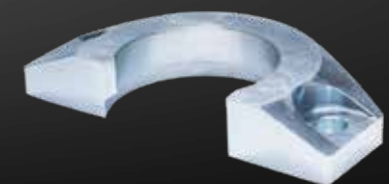
SAUER PRESS BRIDGE 2 1/4" - 14 UNS



DESCRIPTION	ARTICLE
SAUER Press Bridge 2 1/4" - 14 UNS	80220045

SAUER PRESS BRIDGE

Fits Sauer press frame set 80220032



DESCRIPTION	ARTICLE
SAUER Press Bridge with Open Mount	80220034

SAUER ADAPTER RING

For press bridge with open mount, fits 80220034.



DESCRIPTION	ARTICLE
SAUER Adapter Ring	80220035

SAUER CONNECTOR ROD PAIR FOR PRESS FRAME, 200 MM

pair of connecting rods for press frame, 200 mm



DESCRIPTION	ARTICLE
SAUER Connector Rod Pair for Press Frame, 200 mm	80220040
SAUER Connector Rod Pair for Press Frame, 300 mm	80220041
SAUER Connector Rod Pair for Press Frame, 400 mm	80220042

SAUER PRESSING CLAMP SET, 7-PIECE

The Sauer pressing clamp is designed for work directly on the vehicle and can be operated both manually and hydraulically.

Description:

- Internal length: 230 mm
- Socket thread 1: M42 x 2.0
- Socket thread 2: M42 x 2.0
- Max. load: 12 tonnes
- Weight: 6.6 kg



DESCRIPTION	ARTICLE
SAUER Pressing clamp set, 7-piece	81230300

SAUER PRESSURE PLATE, MODEL 1

for mounting or dismantling of bearings, pinions or CV joints during repair work on wheel bearings, suspension, drive shafts or gearboxes.

Dimensions:

- 200 x 150 x 14 mm
- Radii: ø 32, 38, 50, 61

Used equivalent to OEM number VW401.



DESCRIPTION	ARTICLE
SAUER pressure plate, model 1	81231700

SAUER PRESSURE PLATE, MODEL 2

for mounting or dismantling of bearings, pinions or CV joints during repair work on wheel bearings, suspension, drive shafts or gearboxes.

Dimensions:

- 200 x 150 x 14 mm
- Radii: ø 31, 50, 56, 83

Used equivalent to OE number VW402.



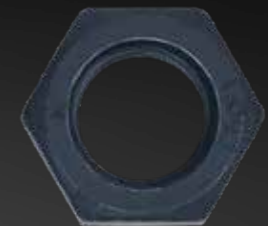
DESCRIPTION	ARTICLE
SAUER pressure plate, model 2	81231800

SAUER CONNECTOR ROD FOR PRESS FRAME, 200 MM



DESCRIPTION	ARTICLE
SAUER Connector Rod for Press Frame, 200 mm	80220037
SAUER Connector Rod for Press Frame, 300 mm	80220038
SAUER Connector Rod for Press Frame, 400 mm	80220039

NUT FOR CONNECTING RODS, DIN 934, M16 X 2.0



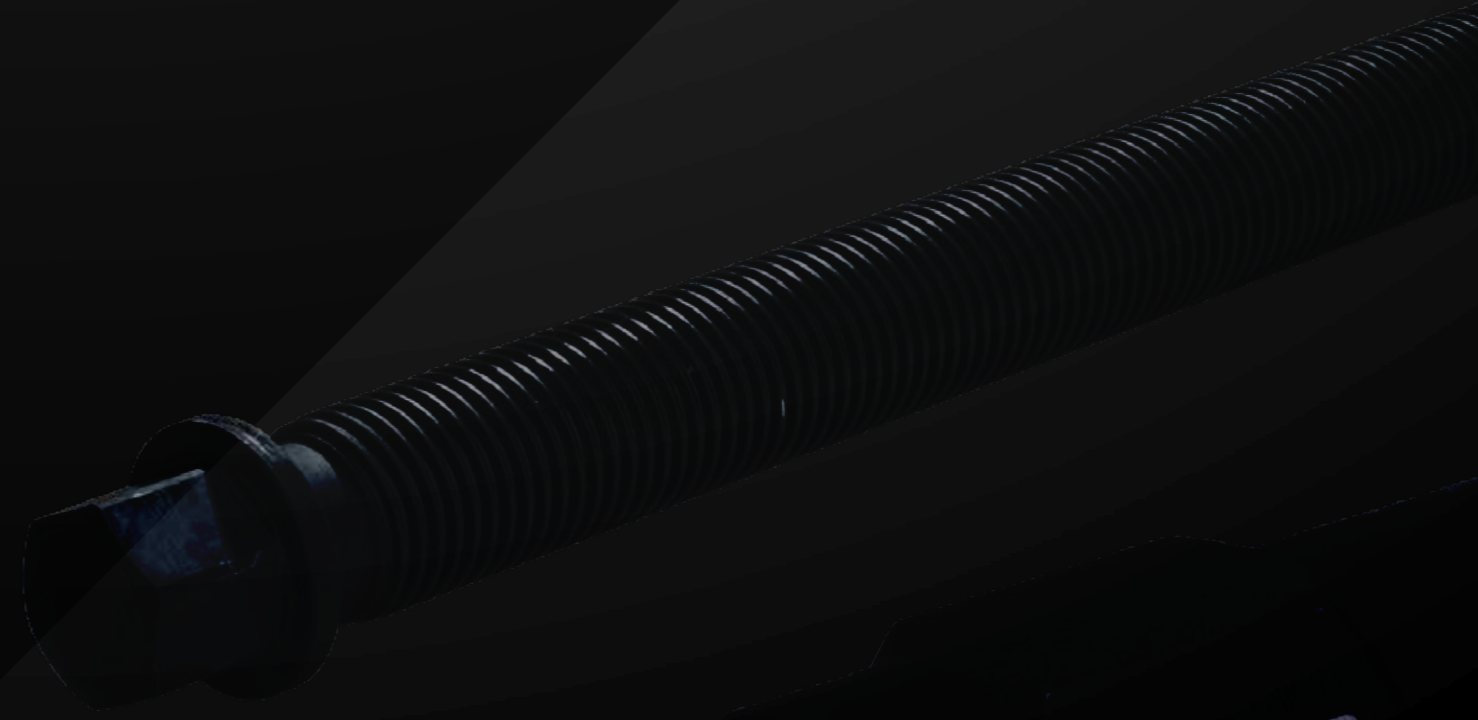
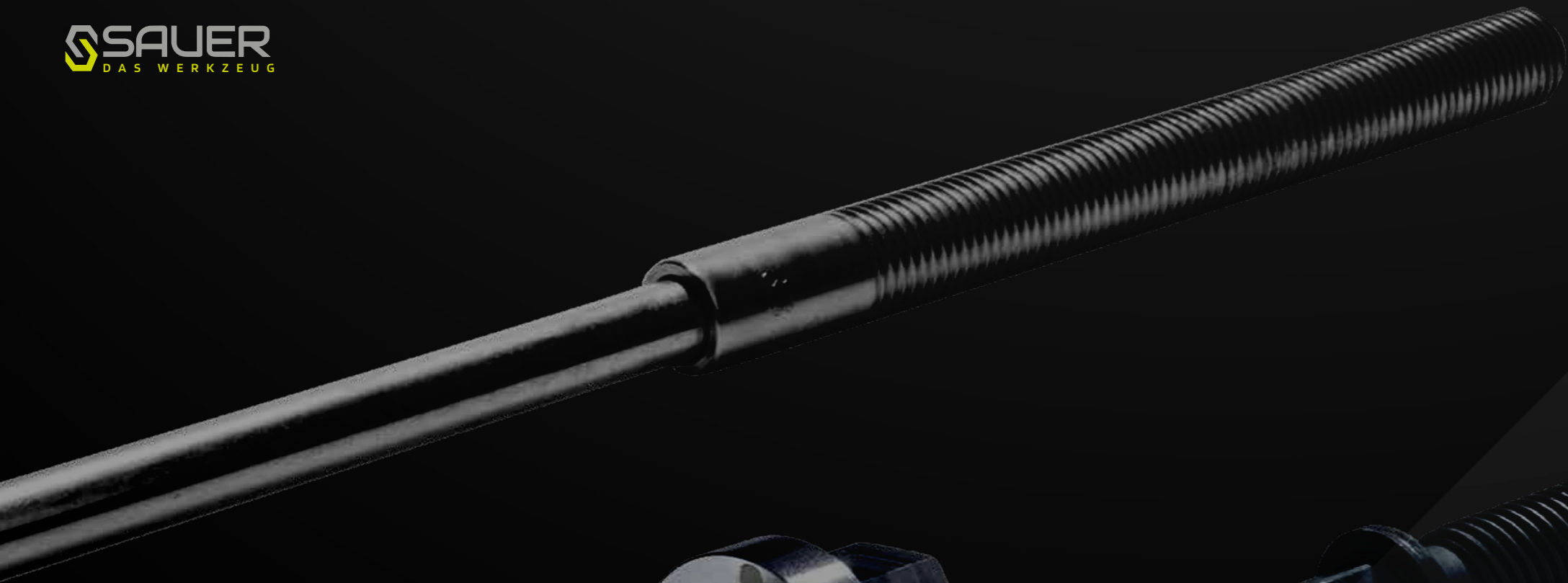
DESCRIPTION	ARTICLE
Nut for connecting rods, DIN 934, M16 x 2.0	80220043

SAUER PRESS FRAME MOUNTING

Adapter for attaching the SAUER press frame to the SAUER cylinder holder 80 2 20100.



DESCRIPTION	ARTICLE
SAUER Press Frame Mounting	80220115



SPINDLES / NUTS

SAUER
81 2 30405

PAGE 84 - 88

SAUER FEED SHAFT M10 × 450 MM WITH NUT

For hydraulic tensioning



DESCRIPTION	ARTICLE
SAUER Feed Shaft M10 × 450 mm with Nut	80220004
SAUER Feed Shaft M12 × 450 mm, with Nut	80220007
SAUER Feed Shaft M14 × 450 mm with Nut	80220010
SAUER Feed Shaft M14 × 590 mm with Nut	80220013
SAUER Feed Shaft M16 × 450 mm with Nut	80220015
SAUER Feed Shaft M16 × 590 mm with Nut	80220018
SAUER Feed Shaft M18 × 450 mm with Nut	80220020
SAUER Feed Shaft M18 × 590 mm with Nut	80220023
SAUER Feed Shaft M20 × 450 mm with Nut	80220025
SAUER Feed Shaft M20 × 590 mm with Nut	80220028

SAUER FEED SHAFT M10 × 450 MM

For hydraulic tensioning



DESCRIPTION	ARTICLE
SAUER Feed Shaft M10 × 450 mm	80220005
SAUER Feed Shaft M12 × 450 mm	80220008
SAUER Feed Shaft M14 × 450 mm	80220011
SAUER Feed Shaft M14 × 590 mm	80220014
SAUER Feed Shaft M16 × 450 mm	80220016
SAUER Feed Shaft M16 × 590 mm	80220019
SAUER Feed Shaft M18 × 450 mm	80220021
SAUER Feed Shaft M18 × 590 mm	80220024
SAUER Feed Shaft M20 × 450 mm	80220026
SAUER Feed Shaft M20 × 590 mm	80220029

SAUER NUT M10 × 1.5

With magnetic system and guide, for hydraulic tensioning



DESCRIPTION	ARTICLE
SAUER Nut M10 × 1.5	80220006
SAUER Nut M12 × 1.75	80220009
SAUER Nut M14 × 2.0	80220012
SAUER Nut M16 × 2.0	80220017
SAUER Nut M18 × 2.5	80220022
SAUER Nut M20 × 2.5	80220027

SAUER PRESSURE SPINDLE, 450 MM

With magnetic system



DESCRIPTION	ARTICLE
SAUER Pressure Spindle, 450 mm	80220059
SAUER Pressure Spindle, 590 mm	80220060

SAUER FEED SHAFT TR10 × 1.5 × 350 MM

For manual tensioning work.



DESCRIPTION	ARTICLE
SAUER Feed Shaft TR10 × 1.5 × 350 mm	80220054
SAUER Feed Shaft TR12 × 2.0 × 350 mm	80220055
SAUER Feed Shaft TR14 × 2.0 × 350 mm	80220056
SAUER Feed Shaft TR16 × 2.0 × 350 mm	80220057
SAUER Feed Shaft TR18 × 2.0 × 350 mm	80220058

SAUER NUT TR10 × 1.5

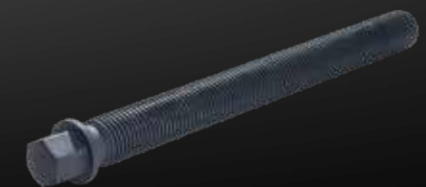
For TR10 × 1.5 manual feed rod with magnetic system and guide



DESCRIPTION	ARTICLE
SAUER Nut TR10 × 1.5	80220062
SAUER Nut TR12 × 2.0	80220063
SAUER Nut TR14 × 2.0	80220064
SAUER Nut TR16 × 2.0	80220065
SAUER Nut TR18 × 2.0	80220066

SAUER PRESSURE SPINDLE AND FEED SHAFT TR20 × 2.0 × 450 MM

For manual pressing and tensioning work. The TR20 trapezoid thread ensures the highest power transmission.



DESCRIPTION	ARTICLE
SAUER Pressure Spindle and Feed Shaft TR20 × 2.0 × 450 mm	81230401

SAUER NUT TR20×2.0

nut TR22 x 3,0



DESCRIPTION	ARTICLE
SAUER Nut TR20×2.0	81230405

SAUER ADAPTER FOR PRESSURE PIECES

For insertion into TR20 pressure spindle and feed shaft.



DESCRIPTION	ARTICLE
SAUER adapter for pressure pieces	81230403

SAUER ADAPTER TR20×2.0 TO 2 1/4" - 14 UNS

For adapting the TR20 pressure spindle and feed shaft to a 2 1/4"-14 UNS screw thread.



DESCRIPTION	ARTICLE
SAUER Adapter TR20×2.0 to 2 1/4" - 14 UNS	81230404

SAUER ADAPTER TR20×2.0 TO M42×2.0

For adapting the TR20 pressure spindle and feed shaft to an M42 screw thread.



DESCRIPTION	ARTICLE
SAUER Adapter TR20×2.0 to M42×2.0	81230402

PRESSURE AND SUPPORT SLEEVE

PAGE 89 - 93

SAUER PRESSURE AND SUPPORT SLEEVE SET, 18 – 78 MM, 54-PIECE

Universal pressure and support sleeve set with internal diameters of 18 to 78 mm and lengths of 40 mm, 100 mm, and 120 mm.

Ideal for removing and installing rubber bearings and supporting joints.

Contents:

- Pressure and support sleeves, \varnothing 18–78 mm, length 40 mm
- Pressure and support sleeves, \varnothing 26–70 mm, length 100 mm
- Pressure/support sleeves \varnothing 72–78 mm, length 120 mm



DESCRIPTION	ARTICLE
SAUER Pressure and Support Sleeve Set, 18 – 78 mm, 54-piece	81230200

SAUER PRESSURE AND SUPPORT SLEEVE SET, \varnothing 72–108 MM

Universal pressure and support sleeve set with internal diameters of 72 to 108 mm and lengths of 40 mm, 120 mm, and 150 mm.

Ideal for removing and installing rubber bearings and wheel bearings.

30-piece

Contents:

- Pressure/support sleeves \varnothing 72–100 mm, length 40 mm
- Pressure/support sleeves \varnothing 80–100 mm, length 120 mm
- Pressure/support sleeves \varnothing 102–108 mm, length 150 mm



DESCRIPTION	ARTICLE
SAUER Pressure and Support Sleeve Set, \varnothing 72–108 mm	81230000

SAUER PRESSURE AND SUPPORT SLEEVE SET, \varnothing 102–120 MM

Universal pressure and support sleeve set with internal diameters of 102 to 120 mm and lengths of 40 mm and 150 mm.

Ideal for commercial vehicles.

12-piece

Contents:

- Pressure/support sleeves \varnothing 102–112 mm, length 40 mm
- Pressure/support sleeves \varnothing 110–120 mm, length 150 mm



DESCRIPTION	ARTICLE
SAUER Pressure and Support Sleeve Set, \varnothing 102–120 mm	81230100

SAUER PRESSURE AND SUPPORT SLEEVE SET, \varnothing 22–60 MM

Comprehensive universal set for removing and installing rubber bearings and supporting joints.

20-piece

Contents:

- Pressure and support sleeves, \varnothing 22–60 mm, length 40 mm



DESCRIPTION	ARTICLE
SAUER Pressure and Support Sleeve Set, \varnothing 22–60 mm	81230800

SAUER PRESSURE AND SUPPORT SLEEVE SET, \varnothing 22–82 MM

Comprehensive universal set for removing and installing rubber bearings and supporting joints.

31-piece

Contents:

- Pressure and support sleeves, \varnothing 22–82 mm, length 40 mm



DESCRIPTION	ARTICLE
SAUER Pressure and Support Sleeve Set, \varnothing 22–82 mm	81231200

SAUER PRESSURE AND SUPPORT SLEEVE SET, \varnothing 30–68 MM

Comprehensive universal set for removing and installing rubber bearings and supporting joints.

20-piece

Contents:

- Pressure and support sleeves, \varnothing 30–68 mm, length 100 mm



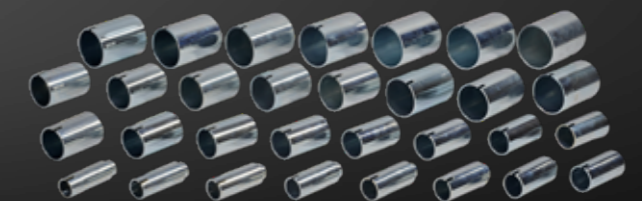
DESCRIPTION	ARTICLE
SAUER Pressure and Support Sleeve Set, \varnothing 30–68 mm	81230700

SAUER PRESSURE AND SUPPORT SLEEVE SET, 30–90 MM, 31-PIECE

Comprehensive universal set for removing and installing rubber bearings and supporting joints.

Contents:

- Pressure and support sleeves, \varnothing 30–70 mm, length 100 mm
- Pressure and support sleeves, \varnothing 72–90 mm, length 120 mm



DESCRIPTION	ARTICLE
SAUER Pressure and support sleeve set, 30–90 mm, 31-piece	81231100

SAUER PRESSURE AND SUPPORT SLEEVE Ø 18/26 MM × 40 MM

pressure-/support sleeve universal, Ø 18 x 26 mm, length 40 mm



DESCRIPTION	ARTICLE
SAUER Pressure and Support Sleeve Ø 18/26 mm × 40 mm	81200001
SAUER Pressure and Support Sleeve Ø 20/28 mm × 40 mm	81200002
SAUER Pressure and Support Sleeve Ø 22/30 mm × 40 mm	81200003
SAUER Pressure and Support Sleeve Ø 24/32 mm × 40 mm	81200004
SAUER Pressure and Support Sleeve Ø 26/34 mm × 40 mm	81200005
SAUER Pressure and Support Sleeve Ø 28/36 mm × 40 mm	81200006
SAUER Pressure and Support Sleeve Ø 30/38 mm × 40 mm	81200007
SAUER Pressure and Support Sleeve Ø 32/40 mm × 40 mm	81200008
SAUER Pressure and Support Sleeve Ø 34/42 mm × 40 mm	81200009
SAUER Pressure and Support Sleeve Ø 36/44 mm × 40 mm	81200010
SAUER Pressure and Support Sleeve Ø 38/46 mm × 40 mm	81200011
SAUER Pressure and Support Sleeve Ø 40/48 mm × 40 mm	81200012
SAUER Pressure and Support Sleeve Ø 42/50 mm × 40 mm	81200013
SAUER Pressure and Support Sleeve Ø 44/52 mm × 40 mm	81200014
SAUER Pressure and Support Sleeve Ø 46/54 mm × 40 mm	81200015
SAUER Pressure and Support Sleeve Ø 48/56 mm × 40 mm	81200016
SAUER Pressure and Support Sleeve Ø 50/58 mm × 40 mm	81200017
SAUER Pressure and Support Sleeve Ø 52/60 mm × 40 mm	81200018
SAUER Pressure and Support Sleeve Ø 54/62 mm × 40 mm	81200019
SAUER Pressure and Support Sleeve Ø 56/64 mm × 40 mm	81200020
SAUER Pressure and Support Sleeve Ø 58/66 mm × 40 mm	81200021
SAUER Pressure and Support Sleeve Ø 60/68 mm × 40 mm	81200022
SAUER Pressure and Support Sleeve Ø 62/70 mm × 40 mm	81200023
SAUER Pressure and Support Sleeve Ø 64/72 mm × 40 mm	81200024
SAUER Pressure and Support Sleeve Ø 66/74 mm × 40 mm	81200025
SAUER Pressure and Support Sleeve Ø 68/76 mm × 40 mm	81200026
SAUER Pressure and Support Sleeve Ø 70/78 mm × 40 mm	81200027
SAUER Pressure and Support Sleeve Ø 72/80 mm × 40 mm	81200028
SAUER Pressure and Support Sleeve Ø 74/82 mm × 40 mm	81200029
SAUER Pressure and Support Sleeve Ø 76/84 mm × 40 mm	81200030
SAUER Pressure and Support Sleeve Ø 78/86 mm × 40 mm	81200031
SAUER Pressure and Support Sleeve Ø 80/88 mm × 40 mm	81200032
SAUER Pressure and Support Sleeve Ø 82/90 mm × 40 mm	81200033
SAUER Pressure and Support Sleeve Ø 84/92 mm × 40 mm	81200034
SAUER Pressure and Support Sleeve Ø 86/94 mm × 40 mm	81200035
SAUER Pressure and Support Sleeve Ø 88/96 mm × 40 mm	81200036
SAUER Pressure and Support Sleeve Ø 90/98 mm × 40 mm	81200037
SAUER Pressure and Support Sleeve Ø 92/100 mm × 40 mm	81200038
SAUER Pressure and Support Sleeve Ø 94/102 mm × 40 mm	81200039
SAUER Pressure and Support Sleeve Ø 96/104 mm × 40 mm	81200040
SAUER Pressure and Support Sleeve Ø 98/106 mm × 40 mm	81200041
SAUER Pressure and Support Sleeve Ø 100/108 mm × 40 mm	81200042
SAUER Pressure and Support Sleeve Ø 102/110 mm × 40 mm	81200043
SAUER Pressure and Support Sleeve Ø 104/112 mm × 40 mm	81200044
SAUER Pressure and Support Sleeve Ø 106/114 mm × 40 mm	81200045
SAUER Pressure and Support Sleeve Ø 108/116 mm × 40 mm	81200046
SAUER Pressure and Support Sleeve Ø 110/118 mm × 40 mm	81200047
SAUER Pressure and Support Sleeve Ø 112/120 mm × 40 mm	81200048

SAUER PRESSURE AND SUPPORT SLEEVE Ø 26/34 MM × 100 MM

pressure-/support sleeve universal, Ø 26 x 34 mm, length 100 mm



DESCRIPTION	ARTICLE
SAUER Pressure and Support Sleeve Ø 26/34 mm × 100 mm	81200099
SAUER Pressure and Support Sleeve Ø 28/36 mm × 100 mm	81200049
SAUER Pressure and Support Sleeve Ø 30/38 mm × 100 mm	81200050
SAUER Pressure and Support Sleeve Ø 32/40 mm × 100 mm	81200051
SAUER Pressure and Support Sleeve Ø 34/42 mm × 100 mm	81200052
SAUER Pressure and Support Sleeve Ø 36/44 mm × 100 mm	81200053
SAUER Pressure and Support Sleeve Ø 38/46 mm × 100 mm	81200054
SAUER Pressure and Support Sleeve Ø 40/48 mm × 100 mm	81200055
SAUER Pressure and Support Sleeve Ø 42/50 mm × 100 mm	81200056
SAUER Pressure and Support Sleeve Ø 44/52 mm × 100 mm	81200057
SAUER Pressure and Support Sleeve Ø 46/54 mm × 100 mm	81200058
SAUER Pressure and Support Sleeve Ø 48/56 mm × 100 mm	81200059
SAUER Pressure and Support Sleeve Ø 50/58 mm × 100 mm	81200060
SAUER Pressure and Support Sleeve Ø 52/60 mm × 100 mm	81200061
SAUER Pressure and Support Sleeve Ø 54/62 mm × 100 mm	81200062
SAUER Pressure and Support Sleeve Ø 56/64 mm × 100 mm	81200063
SAUER Pressure and Support Sleeve Ø 58/66 mm × 100 mm	81200064
SAUER Pressure and Support Sleeve Ø 60/68 mm × 100 mm	81200065
SAUER Pressure and Support Sleeve Ø 62/70 mm × 100 mm	81200066
SAUER Pressure and Support Sleeve Ø 64/72 mm × 100 mm	81200067
SAUER Pressure and Support Sleeve Ø 66/74 mm × 100 mm	81200068
SAUER Pressure and Support Sleeve Ø 68/76 mm × 100 mm	81200069
SAUER Pressure and Support Sleeve Ø 70/78 mm × 100 mm	81200070
SAUER Pressure and Support Sleeve Ø 72/80 mm × 120 mm	81200071
SAUER Pressure and Support Sleeve Ø 74/82 mm × 120 mm	81200072
SAUER Pressure and Support Sleeve Ø 76/84 mm × 120 mm	81200073
SAUER Pressure and Support Sleeve Ø 78/86 mm × 120 mm	81200074
SAUER Pressure and Support Sleeve Ø 80/88 mm × 120 mm	81200075
SAUER Pressure and Support Sleeve Ø 82/90 mm × 120 mm	81200076
SAUER Pressure and Support Sleeve Ø 84/92 mm × 120 mm	81200077
SAUER Pressure and Support Sleeve Ø 86/94 mm × 120 mm	81200078
SAUER Pressure and Support Sleeve Ø 88/96 mm × 120 mm	81200079
SAUER Pressure and Support Sleeve Ø 90/98 mm × 120 mm	81200080
SAUER Pressure and Support Sleeve Ø 92/100 mm × 120 mm	81200081
SAUER Pressure and Support Sleeve Ø 94/102 mm × 120 mm	81200082
SAUER Pressure and Support Sleeve Ø 96/104 mm × 120 mm	81200083
SAUER Pressure and Support Sleeve Ø 98/106 mm × 120 mm	81200084
SAUER Pressure and Support Sleeve Ø 100/108 mm × 120 mm	81200085
SAUER Pressure and Support Sleeve Ø 102/110 mm × 150 mm	81200086
SAUER Pressure and Support Sleeve Ø 104/112 mm × 150 mm	81200087
SAUER Pressure and Support Sleeve Ø 106/114 mm × 150 mm	81200088
SAUER Pressure and Support Sleeve Ø 108/116 mm × 150 mm	81200089
SAUER Pressure and Support Sleeve Ø 110/118 mm × 150 mm	81200090
SAUER Pressure and Support Sleeve Ø 112/120 mm × 150 mm	81200091
SAUER Pressure and Support Sleeve Ø 114/122 mm × 150 mm	81200092
SAUER Pressure and Support Sleeve Ø 116/124 mm × 150 mm	81200093
SAUER Pressure and Support Sleeve Ø 118/126 mm × 150 mm	81200094
SAUER Pressure and Support Sleeve Ø 120/128 mm × 150 mm	81200095

ADAPTER

PAGE 94 - 97

SAUER HYDRAULIC ADAPTER SET FOR HYDRAULIC CYLINDERS AND HYDRAULIC PUMPS

Hydraulic cylinders and pumps often have different connector systems for the hose lines. Not only do the screw diameters differ from one another, but the basic coupling systems differ considerably and often require multiple pumps or cylinders.

With this set, you can convert your tools to the most common coupling system. Adaptations from 1/4" to 3/8" or vice-versa are not a problem either. At last, your tools fit each other and can be combined.



DESCRIPTION	ARTICLE
SAUER Hydraulic Adapter Set for Hydraulic Cylinders and Hydraulic Pumps	80190011

SAUER HYDRAULIC ADAPTER, 3/8" AUF 1/4"

3/8" NPT external thread to 1/4" NPT internal thread



DESCRIPTION	ARTICLE
SAUER Hydraulic Adapter, 3/8" auf 1/4"	80290004
SAUER Hydraulic Adapter, 1/4" to 3/8"	80290005

SAUER HYDRAULIC COUPLING 1/4" LOOSE HALF

hydraulic coupling 1/4" loose half



DESCRIPTION	ARTICLE
SAUER Hydraulic Coupling 1/4" Loose Half	80290012
SAUER Hydraulic Coupling 3/8" Loose Half	80290010

SAUER HYDRAULIC COUPLING 1/4" FIXED HALF

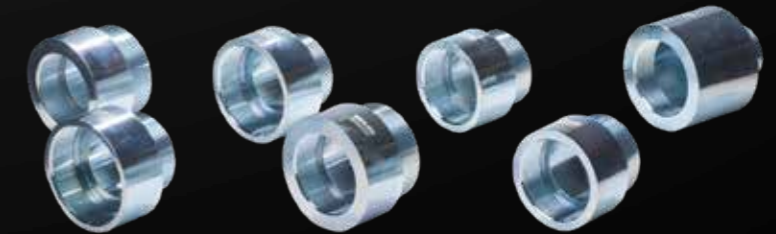
hydraulic coupling 1/4" fixed half



DESCRIPTION	ARTICLE
SAUER Hydraulic Coupling 1/4" Fixed Half	80290013
SAUER Hydraulic Coupling 3/8" Fixed Half	80290011

SAUER THREAD ADAPTER SET FOR HYDRAULIC CYLINDERS AND PRESS FRAMES

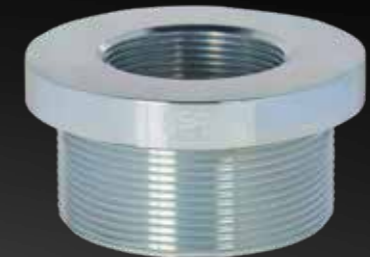
With this set, you can adapt your existing hydraulic cylinders and press frames from different manufacturers, allowing you to finally combine your tools with each other.



DESCRIPTION	ARTICLE
SAUER Thread Adapter Set for Hydraulic Cylinders and Press Frames	80190010

SAUER ADAPTER RING, 2 1/4"- 14 UNS TO 1 1/2" - 16 UN

Sauer adapter ring, outer thread 2 1/4" - 14 UNS, inner thread 1 1/2" - 16 UN



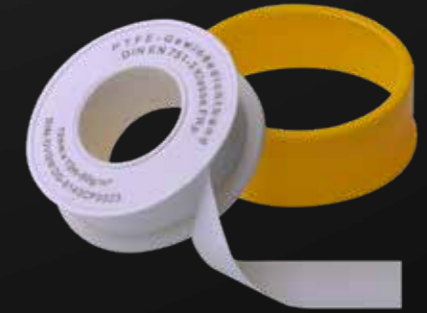
DESCRIPTION	ARTICLE
Sauer adapter ring, 2 1/4"- 14 UNS to 1 1/2" - 16 UN	80290014
SAUER Thread Adapter	80290008
SAUER Adapter Ring, 2 1/4" - 16 UN to 2 1/4" - 14 UNS	80290021
SAUER Adapter Ring, 2 3/4" - 16 UN to 2 1/4" - 14 UNS	80290019
SAUER Adapter Ring, M42 x 2.0 to 2 1/4" - 14 UNS	80290022
SAUER Adapter Ring, M68 x 2.0 to 2 1/4" - 14 UNS	80290020
SAUER Adapter Ring, 2 1/4" - 14 UNS to 2 1/4" - 16 UN	80290001
SAUER Adapter Ring, 2 1/4" - 14 UNS to 2 3/4" - 16 UN	80290002
Sauer adapter ring, 2 1/4"- 14 UNS to M38 x 1.5	80290009
SAUER Thread Adapter	80290007
Sauer adapter ring, 2 1/4"- 14 UNS to M56 x 2.0	80290015
SAUER Adapter Ring, 2 1/4" - 14 UNS to M68 x 2.0	80290003
SAUER Thread Adapter	80290006

ACCESORIES

PAGE 99

SAUER TEFLON TAPE

teflon strip



DESCRIPTION

SAUER Teflon Tape

ARTICLE

80290000

SAUER STORAGE SUITCASE, EMPTY

Plastic storage case
Size: 575 × 355 × 172 mm



DESCRIPTION

SAUER Storage suitcase, empty

ARTICLE

80290030

SAUER STORAGE SUITCASE

with tool insert

For storage of the SAUER aluminum hydraulic foot pump, 700 bar 80210100



DESCRIPTION

Sauer Storage suitcase

ARTICLE

80210103



SW-STAHL GMBH
An der Hasenjagd 3
D-42897 Remscheid
www.swstahl.de