

# TOOLNEWS

FOR PROFESSIONALS

# SPECIAL



6

SOCKET  
WRENCH  
SETS

68

TOOLBOARDS

75

JACKS

## NFZ SPECIAL TOOLS

**SW STAHL**  
PROFESSIONAL TOOLS

# POWERFUL TOOLS FOR HEAVY MACHINERY

When moving tons, you need tools with real power.

Our commercial vehicle tools are made for big jobs – from trucks and construction machinery to excavators and tractors.

Maximum power, uncompromising precision, and absolute reliability for everyone who works with large machines on a daily basis.

Noticeable performance in every application, developed for extreme loads.

**Tools you can rely on when it really matters.**



**SW STAHL COMBINATION SPANNER SET, 6-22 MM, 15-PIECE**

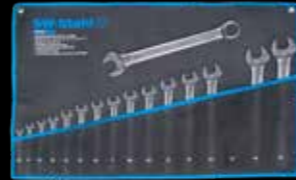
- The clevis and ring head are angled by 15°
  - Packed in practical plastic tube with EURO-hanger
- 6, 7, 8, 9, 10, 11, 12, 13, 14, 15, 16, 17, 18, 19, 22 mm



00162L 31,90 EUR\*

**SW STAHL COMBINATION SPANNER SET, 10-32 MM, 16-PIECE**

- The clevis and ring head are angled by 15°
  - Packed in practical roll-up bag
- 10, 11, 12, 13, 14, 15, 16, 17, 18, 19, 21, 22, 24, 27, 30, 32 mm



00163L 72,00 EUR\*

**SW STAHL COMBINATION SPANNER SET, 10 - 19 MM, EXTRA SHORT, 10-PIECE**

- Chrome-vanadium, extra short, glare-free
- For tight swivelling angles and spots that are difficult to access, e.g. on air-conditioning systems, instruments, during radio installation, in the door and engine area.
- Length between 90 and 140 mm



00840L 31,90 EUR\*

**SW STAHL COMBINATION SPANNER SET, 21-32 MM, EXTRA LONG, 6-PIECE**

- Chromium vanadium, chrome-plated, matt chrome-plated, finely polished, in black roll-up pouch.
- Extra long version enables high power transmission
  - Hardness and torque exceed the requirements of the relevant DIN standards
  - 21, 22, 24, 27, 30, 32 mm



00835L 52,90 EUR\*

**SW STAHL COMBINATION SPANNER SET, 34-50 MM, EXTRA LONG, 6-PIECE**

- Combination set, extra long, extra strong, for use on commercial vehicles.
- WS 34 x 440 mm, long
  - WS 36 x 445 mm, long
  - WS 38 x 470 mm, long
  - WS 41 x 495 mm, long
  - WS 46 x 540 mm, long
  - WS 50 x 600 mm, long



00927L 69,90 EUR\*

**SW STAHL COMBINATION SPANNER SET, 6-32 MM, 25-PIECE**

- The open and ring head are inclined by 15°
  - Packed in practical roll bag
- 6, 7, 8, 9, 10, 11, 12, 13, 14, 15, 16, 17, 18, 19, 20, 21, 22, 23, 24, 25, 26, 27, 28, 30, 32 mm



00925L 63,50 EUR\*

**SW STAHL SLOGGING RING WRENCH E24**

- For working on brake caliper bolt connections, front axles and trailer axles.
- Suitable for use with torque wrenches (3/4" drive)
  - Recommended for particularly heavy-duty installations



00250L-E24 10,50 EUR\*

**SW STAHL SLOGGING RING WRENCH 24 MM**

- For working on brake caliper bolt connections, front axles and trailer axles.
- Suitable for use with torque wrenches (3/4" drive)
  - Recommended for particularly heavy-duty installations



00250L-24 10,50 EUR\*

**SW STAHL SLOGGING RING WRENCH**

Manufactured in accordance with DIN 7444

- For use in particularly heavy-duty assembly work

- Made from high-quality chrome vanadium steel
- Burnished



00257L	Slogging ring wrench, 27 mm	11,60 EUR*
00258L	Slogging ring wrench, 30 mm	11,70 EUR*
00262L	Slogging ring wrench, 32 mm	12,30 EUR*
00264L	Slogging ring wrench, 36 mm	14,20 EUR*
00265L	Slogging ring wrench, 41 mm	15,90 EUR*
00266L	Slogging ring wrench, 46 mm	19,30 EUR*
00267L	Slogging ring wrench, 50 mm	20,50 EUR*
00269L	Slogging ring wrench, 55 mm	22,50 EUR*
00270L	Slogging ring wrench, 60 mm	23,50 EUR*
00271L	Slogging ring wrench, 65 mm	42,50 EUR*
00272L	Slogging ring wrench, 70 mm	52,90 EUR*
00273L	Slogging ring wrench, 75 mm	74,00 EUR*
00274L	Slogging ring wrench, 80 mm	106,00 EUR*
00275L	Slogging ring wrench, 85 mm	123,00 EUR*
00276L	Slogging ring wrench, 90 mm	152,90 EUR*
00279L	Slogging ring wrench, 95 mm	193,00 EUR*

**SW STAHL OPEN-ENDED SLOGGING WRENCH 27 MM**

Manufactured in accordance with DIN 133

- For use in particularly heavy-duty assembly work
- Made from high-quality chrome vanadium steel
- Burnished



00280L 17,90 EUR\*

**SW STAHL CROW'S FOOT SPANNERS, 10-19 MM, 3/8", 10-PIECE**

on clamping rail, ideal for injection lines, air-conditioning systems, brake lines, compressed air and hydraulic lines and power steering



01480L 42,50 EUR\*



**SW STAHL RATCHET WRENCH, 1/4", SLIM DESIGN**

The new, particularly slim design of the reversible ratchet makes it easy to work in confined spaces.

- Especially slim shape
- Fine toothed with 72 teeth
- Drive: 6.3 mm (1/4")
- High torque - 50% above DIN
- Material: chromium vanadium
- With insert lock
- Particularly handy 2-component handle

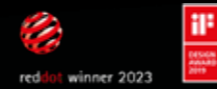


06014L 19,90 EUR\*

**SW STAHL RATCHET WRENCH, 1/4", HIGH TORQUE, 135 NM**

Due to a particularly high torque, the reversible ratchet is the perfect tool for example for loosening stubborn and stuck screws.

- Drive: 6.3 mm (1/4")
- Particularly high torque: 135 Nm
- Fine toothed with 90 teeth
- Very low swing angle
- Material: chromium vanadium
- Particularly handy 2-component handle
- Tested by an independent testing institute

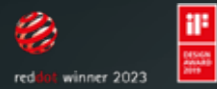


06094L 28,90 EUR\*

**SW STAHL RATCHET WRENCH, 3/8", SLIM DESIGN**

The new, particularly slim design of the reversible ratchet makes it easy to work in confined spaces.

- Especially slim shape
- Fine toothed with 72 teeth
- Drive: 10 mm (3/8")
- High torque - 50% above DIN
- Material: chromium vanadium
- With insert lock
- Particularly handy 2-component handle

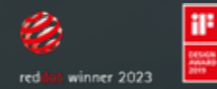


06038L 24,90 EUR\*

**SW STAHL RATCHET WRENCH, 3/8", HIGH TORQUE, 440 NM**

Due to a particularly high torque, the reversible ratchet is the perfect tool for example for loosening stubborn and stuck screws.

- Drive: 10 mm (3/8")
- Particularly high torque: 440 Nm
- Fine toothed with 90 teeth
- Very low swing angle
- Material: chromium vanadium
- Particularly handy 2-component handle
- Tested by an independent testing institute

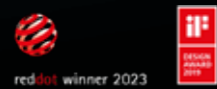


06093L 34,90 EUR\*

**SW STAHL RATCHET WRENCH, 1/2", SLIM DESIGN**

The new, particularly slim design of the reversible ratchet makes it easy to work in confined spaces.

- Especially slim shape
- Fine toothed with 72 teeth
- Drive: 12.5 mm (1/2")
- High torque - 50% above DIN
- Material: chromium vanadium
- With insert lock
- Particularly handy 2-component handle



06012L 29,90 EUR\*

**SW STAHL RATCHET WRENCH, 1/2", HIGH TORQUE, 1,075 NM**

Due to a particularly high torque, the reversible ratchet is the perfect tool for example for loosening stubborn and stuck screws.

- Drive: 12.5 mm (1/2")
- Particularly high torque: 1,075 Nm
- Fine toothed with 90 teeth
- Very low swing angle
- Material: chromium vanadium
- Particularly handy 2-component handle
- Tested by an independent testing institute

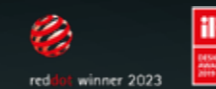


06092L 39,90 EUR\*

**SW STAHL RATCHET WRENCH SET, 1/2" AND 1/4", SLIM DESIGN, 2-PIECE**

The new, particularly slim design of the reversible ratchet makes it easy to work in confined spaces.

- Especially slim shape
- Fine toothed with 72 teeth
- Drive: 12.5 mm (1/2")/ 6.3 mm (1/4")
- High torque - 50% above DIN
- Material: chromium vanadium
- With insert lock
- Particularly handy 2-component handle



06026L 39,90 EUR\*

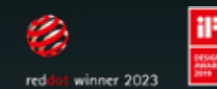
**SW STAHL RATCHET WRENCH SET, 1/4" AND 1/2", HIGH TORQUE, 2-PIECE**

Due to a particularly high torque, the reversible ratchets are the perfect tool for example to remove stubborn and stuck screws.

- Fine toothed with 90 teeth
- Very low swing angle
- Material: chromium vanadium
- Particularly handy 2-component handle
- Tested by an independent testing institute

Content:

- 1/2" ratchet wrench 06092L, 1,075 Nm
- 1/4" ratchet wrench 06094L, 135 Nm



06096L 59,90 EUR\*

THE **EXTENDABLE**  
TELESCOPIC RATCHET  
WITH **1,075 NM**

**SW STAHL RATCHET WRENCH, 1/2", HIGH TORQUE, 1,075 NM, TELESCOPIC**

The particularly high torque of the ratchet wrench in combination with a telescopic extension is the perfect tool for loosening stubborn and stuck screws.

- Drive: 12.5 mm (1/2")
- Particularly high torque: 1,075 Nm
- With telescopic extension
- Can be fixed in 6 positions at 310 - 340 - 365 - 390 - 420 - 450 mm
- Fine toothed with 90 teeth
- Particularly handy 2-component handle



06090L 79,90 EUR\*



**SW STAHL SOCKET SPANNER SET, 1/4", 48-PIECE**

SW STAHL blow mold case „Designed in Germany“ - with separable case and inner foam to avoid rust  
Reversible ratchet wrench and 1/4" bit socket driver with non-slip and ergonomic SW STAHL 2-component handle  
Hardness and torque according to DIN, tools made of chrome vanadium steel, 1/4" screwdriver sockets made of S2 steel with phosphated surface coating for long-lasting corrosion protection, sockets with hexagon profile for maximum torque

- 1 each hexagon sockets 4, 4.5, 5, 5.5, 6, 7, 8, 9, 10, 11, 12, 13, 14 mm
- 1 each bit socket, cross slot PH 1, PH2, PH3
- 1 each bit socket, cross slot PZ 1, PZ2, PZ3
- 1 each bit socket, plain slot 4, 5.5, 7 mm
- 1 each bit socket, T-profile without tamperproof T10, T15, T20 T25, T30, T40
- 1 each bit socket, inner hexagon 3, 4, 5, 6, 7, 8 mm
- 1 each extension 50, 100 mm
- 1 each allen key 1.5, 2, 3 mm
- Reversible ratchet wrench 145 mm, 72 teeth
- Flexible shaft 150 mm
- Universal joint
- Bit socket driver 150 mm
- Adapter from 6.3 mm (1/4") hexagon to square
- Sliding handle 110 mm

DESIGNED  
IN GERMANY



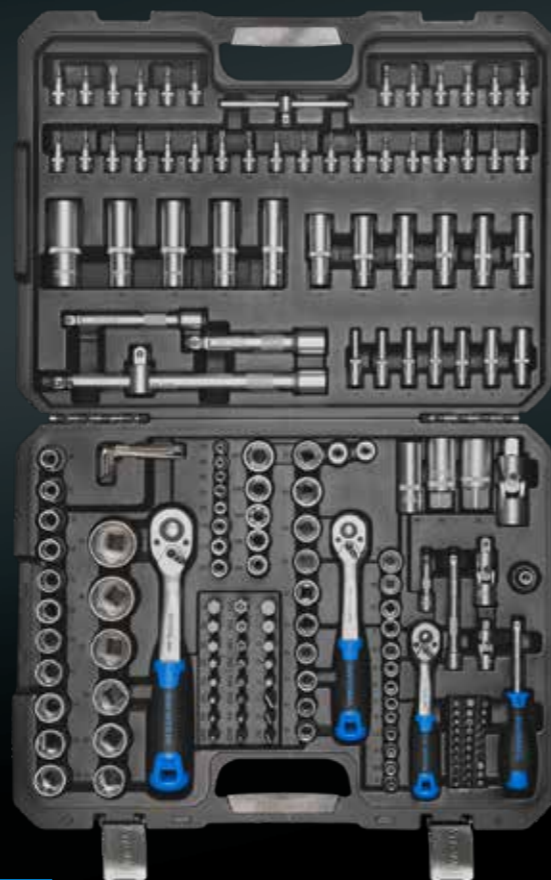
07748L 27,90 EUR\*

**SW STAHL SOCKET SPANNER SET, 1/4", 3/8", 1/2", 184-PIECE**

SW STAHL blow mold case „Designed in Germany“ - with separable case and inner foam to avoid rust.  
Reversible ratchet wrenches and 1/4" bit socket driver with non-slip and ergonomic SW STAHL 2-component handle.  
Hardness and torque according to DIN, tools made of chrome vanadium steel, 1/4" bits and 1/4" screwdriver sockets made of S2 steel with phosphated surface coating for long-lasting corrosion protection, sockets in hexagon wave profile version for maximum torque.

- With 6,3 mm (1/4") drive:**
- 1 each hexagon socket 4 - 14 mm
  - 1 each hexagon socket extra long 4 - 10 mm
  - 1 each E-profile socket E4, E5, E6, E7, E8
  - 1 each bit socket, T-profile T8 - T30
  - ...
- With 10,0 mm (3/8") drive:**
- 1 each hexagon socket 10 - 19 mm
  - 1 each hexagon socket extra long 10 - 15 mm
  - 1 each E-profile socket E10 - E18
  - ...
- With 12,5 mm (1/2") drive:**
- 1 each hexagon socket 10 - 32 mm
  - 1 each hexagon socket extra long 16 - 19, 22 mm
  - ...

DESIGNED  
IN GERMANY



07784L 99,90 EUR\*

**SW STAHL SOCKET SPANNER SET, 1/4", 1/2", 97-PIECE**

SW STAHL blow mold case „Designed in Germany“ - with separable case and inner foam to avoid rust.  
Reversible ratchet wrenches and 1/4" bit socket driver with non-slip and ergonomic SW STAHL 2-component handle.  
Hardness and torque according to DIN, tools made of chrome vanadium steel, 1/4" bits and 1/4" screwdriver sockets made of S2 steel with phosphated surface coating for long-lasting corrosion protection, sockets with hexagon profile for maximum torque.

- With 6,3 mm (1/4") drive:**
- 1 each hexagon socket 4, 4.5, 5, 5.5, 6, 7, 8, 9, 10, 11, 12, 13, 14 mm
  - 1 each hexagon socket, extra long 6, 7, 8, 9, 10, 11, 12, 13 mm
  - 1 each bit socket, T-profile T8, T10, T15, T20, T25, T30
  - 1 each bit socket, cross slot PH1, PH2
  - 1 each bit socket, cross slot PZ1, PZ2
  - 1 each bit socket, slot 4, 5.5, 7 mm
  - 1 each bit socket, inner hexagon 3, 4, 5, 6 mm
  - 1 each extension 50, 100 mm
  - Flexible extension 150 mm
  - Reversible ratchet wrench 145 mm, 72 teeth
  - bit socket driver 150 mm
  - Sliding handle 110 mm
  - Adaptor for 6.3 mm bits (1/4")
  - Cardan joint
- With 12,5 mm (1/2") drive:**
- 1 each hexagon socket 10 - 32 mm
  - 1 each hexagon socket, extra long 14, 15, 17, 19 mm
  - 1 each spark plug socket 16, 21 mm
  - 1 extension 125, 250 mm
  - Sliding block for extension in 250 mm
  - Reversible ratchet wrench 250 mm, 72 teeth
  - ...

DESIGNED  
IN GERMANY



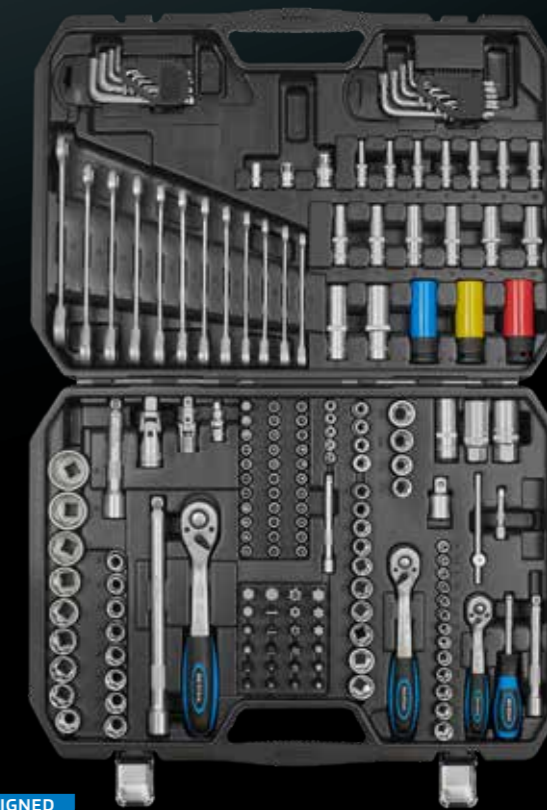
07797L 69,90 EUR\*

**SW STAHL SOCKET SPANNER SET, 1/4", 3/8", 1/2", 176-PIECE**

6.3 mm + 10 mm + 12.5 mm (1/4" + 3/8" + 1/2") drive, chrome-vanadium steel, hardness and torque according to DIN, sockets in wave profile version for maximum torque.

- With 6.3 mm (1/4") drive:**
- 1 each wave profile socket 4, 4.5, 5, 5.5, 6, 7, 8, 9, 10, 11, 12, 13, 14 mm
  - 1 each wave profile socket extra long 4, 5, 6, 7, 8, 9, 10 mm
  - 1 each E-profile E4, E5, E6, E7, E8 mm
  - 1 each extension in 50 and 100 mm
  - ...
- With 10 mm (3/8") drive:**
- 1 each wave-profile socket 10, 11, 12, 13, 14, 15, 16, 17, 18, 19 mm
  - 1 each wave profile socket extra long 10, 11, 12, 13, 14, 15 mm
  - 1 each E-profile E10, E11, E12, E14, E16, E18
  - 1 extension 125 mm
  - ...
- With 12.5 mm (1/2") drive:**
- 1 each wave profile socket 10, 11, 12, 13, 14, 15, 16, 17, 18, 19, 20, 21, 22, 24, 27, 30, 32 mm
  - 1 each wave profile socket extra long 16, 18 mm
  - 1 each pneumatic heavy-duty socket 17-19-21 mm
  - ...
- Combination ratchet wrench, 72 teeth**
- 8, 9, 10, 11, 12, 13, 14, 15, 16, 17, 18, 19 mm

DESIGNED  
IN GERMANY



07635L 154,50 EUR\*



**SW STAHL INDUSTRIAL SOCKET SPANNER SET, 1/2", 27-PIECE**

Torque and hardness according to DIN, 12,5 mm (1/2") drive, chrome-vanadium steel, hexagon sockets for maximum torque.

- Reversible ratchet wrench fine-toothed 72 teeth
- 2 Hinged extensions 125 + 250 mm
- 1 Cardan joint 12,5 mm (1/2")
- 1 adaptor for extension / sliding handle
- 2 Spark plug sockets 16 + 21 mm
- 20 Sockets with hexagon profile, 8 mm - 32 mm



07624L 63,50 EUR\*

**SW STAHL INDUSTRIAL TOOL CASE, 1", 36-80 MM, 16-PIECE**

25 mm (1") drive, chromium vanadium.

- Lever-type ratchet wrench head 200 mm
- Extensions 200 + 400 mm
- Ratchet handle 550 mm
- Sliding block
- Inserts 36, 41, 46, 50, 55, 60, 65, 70, 75, 80 mm



07675L 463,50 EUR\*

**SW STAHL SOCKET SPANNER SET, 3/4", 21-PIECE**

- Reversible ratchet, 500 mm
- Extensions: 100 - 200 - 400 mm
- Sliding handle 450 mm
- Hexagonal bits 19 - 21 - 22 - 23 - 24 - 26 - 27 - 29 - 30 - 32 - 34 - 36 - 38 - 41 - 46 - 50 mm



07660L 216,00 EUR\*

**SW STAHL IMPACT SOCKET SPANNER SET, 3/4", 21-PIECE**

Chromium molybdenum steel for tough and continuous garage use.

- Slide handle 450 mm long
- Ratchet with screw-fit shaft, length: 500 mm
- With quick-action locking on the drive
- Extensions in 100 and 250 mm
- Cardan joint 105 mm
- Sockets 20 mm (3/4"), hexagon, with bore hole and ball groove: 19, 21, 22, 23, 24, 26, 27, 29, 30, 32, 35, 36, 38, 41, 46 and 50 mm
- All parts can also be operated with 20 mm (3/4") impact screwdrivers, which means it is no longer necessary to buy additional power sockets for pneumatic tools



07605L 212,00 EUR\*

**SW STAHL INDUSTRIAL SOCKET SPANNER SET, 3/4", DOUBLE HEXAGON, 21-PIECE**

- Ratchet wrench 500 mm
- Extensions 100 - 200 - 400 mm
- Sliding handle 450 mm
- Bi-hexagon sockets 19 - 21 - 22 - 23 - 24 - 26 - 27 - 30 - 32 - 34 - 36 - 38 - 41 - 46 - 48 - 50 mm

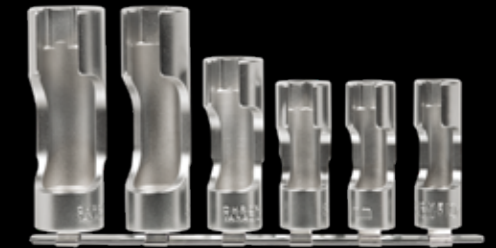


07663L 222,90 EUR\*

**SW STAHL SOCKET SET, 3/8", 10-19 MM, SLOTTED, 6-PIECE**

Chrome-vanadium, hardened, matt chrome-plated.

- Slotted sockets in 10, 11, 12, 14, 17 and 19 mm
- For mounting from the top and side wired temperature sensors, thermal switches and other components
- Also suitable for screwing angled pipes
- Slot width: 7,4 - 8,5 - 9,1 - 10,5 - 13 - 14,4 mm
- Incl. metal rail



01482L 30,50 EUR\*

**SW STAHL SPANNER SOCKETS, 1/2", EP PROFILE, EP18-EP32, 8-PIECE**

12.5 mm (1/2") drive, chromium vanadium steel, matt chrome.

- EP18 - EP20 - EP22 - EP24 - EP26 - EP28 - EP30 - EP32
- With metal bracket



04432L 38,00 EUR\*

**SW STAHL SPANNER SOCKETS, 1/2", E PROFILE, E10-E24, DEEP, 9-PIECE**

Chromium vanadium, chrome-plated.

Sizes:

- E10 - E11 - E12 - E14 - E16 - E18 - E20 - E22 - E24



05680L 22,50 EUR\*

**SW STAHL SPECIAL SOCKET, 1/2", E30, SHORT**

Short version with 12.5 mm (1/2") drive, E30, for tightening and loosening special screw connections on the following Mercedes-Benz vehicles: Actros (963) Arocs (964) Atego (967) Bus (405) Econic (956) Unimog (437) Zetros (949)



04434SB 10,50 EUR\*

**SW STAHL IMPACT SPANNER SOCKET SET, 3/4", 8-PIECE**

high strength, for loosening the articulated shaft screws of various vehicles, e.g. Audi, BMW, Citroen, Ford, Opel, Mercedes-Benz, Nissan, Skoda, Seat, Renault, VW, etc.

Content:

- 5 extra deep bi hex sockets 27 - 30 - 32 - 34 - 36 mm
- 3 Inner hex sockets 14 - 17 - 19 mm



10186L 81,50 EUR\*

**SW STAHL IMPACT SPANNER SOCKETS, 3/4", 22-38 MM, 8-PIECE**

suitable for use with impact wrench, with groove and bore hole, 20 mm (3/4") drive.

Sizes:

- 22 - 24 - 27 - 28 - 30 - 32 - 36 - 38 mm



07900L 63,50 EUR\*

**SW STAHL IMPACT SPANNER SOCKETS, 3/4", 22-38 MM, LONG, 8-PIECE**

Suitable for use with impact wrench, with groove and bore hole, 20 mm (3/4") drive.

Sizes:

- 22 - 24 - 27 - 28 - 30 - 32 - 36 - 38 mm



07910L 74,00 EUR\*



**SW STAHL** **IMPACT SPANNER SOCKET, E28**

For loosening brake caliper screw connections.

- E-profile E28
- Long version
- Material: chrome-molybdenum
- Surface: phosphated
- Internal square according to DIN 3121 / ISO 1174
- Suitable for machine operation



05643SB 16,90 EUR\*

**SW STAHL** **SPECIAL SOCKET, 3/4", E30, LONG**

Long version with 20 mm (3/4") drive, E30, for tightening and loosening special screw connections on the following Mercedes-Benz vehicles: Actros (963) Arocs (964) Atego (967) Bus (405) Econic (956) Unimog (437) Zetros (949)



04436SB 17,90 EUR\*

**SW STAHL** **IMPACT SPANNER SOCKET, 1", 85 MM**

25 mm, (1") drive, e.g for bolting kingpins.



10322L 73,00 EUR\*

**SW STAHL** **IMPACT SPANNER SOCKET, 1", 95 MM**

25 mm (1") drive, e.g for bolting kingpins.



10323L 103,00 EUR\*

**SW STAHL** **IMPACT SOCKETS, 1", 27-50 MM, 8-PIECE**

- 25 mm (1") drive
- Chromium molybdenum
- Length 58 - 80 mm
- High-strength version
- With groove and bore

Sizes:

- 27, 30, 32, 36, 38, 41, 46, 50 mm



07980L 95,50 EUR\*

**SW STAHL** **SCREWDRIVER BITS SET, 1/4", TPR-PROFILE, IP10-IP50, 9-PIECE**

with hole at the end, chromium vanadium, for VAG, Ford, Volvo, Mercedes-Benz, passenger cars and trucks, Rover etc.

- Generator
  - Engine control
  - Air flow meter
  - Door panelling
  - Immobiliser
  - Unit pumps
- Sizes:
- T10 - T15 - T20 - T25 - T27 - T30 - T40 - T45 - T50



IP/4-SET 34,50 EUR\*

**SW STAHL** **IMPACT SCREWDRIVER BITS, 1/2", INTERNAL MULTI-TOOTH, M14-M18, 6-PIECE**

12.5 mm (1/2") drive, multi-tooth, M14, M16, M18, each with lengths of 40 and 75 mm. For attaching high-strength screws to the brake carrier and shock absorber screwed connection, brake system, camshaft drive wheel and rear brake calliper, for working on the chassis, and for removing and installing the wheel bearings/wheel hub unit, e.g. on the VW Passat 3C.



10195L 72,50 EUR\*

**SW STAHL** **IMPACT SCREWDRIVER BITS, 3/4", HEXAGONAL, 9-PIECE**

Chromium molybdenum, impact resistant, with groove and bore. Suitable for many special applications in the automotive sector.

- Hexagon socket profile 14, 17, 19, 21, 22, 23, 24 mm
- Inner multipoint with bore hole M16, M18



07942L 84,90 EUR\*

**SW STAHL** **IMPACT SPECIAL BIT SET, 3/4"+1", 16-PIECE**

Chromium molybdenum suitable for use with impact wrench. This range is universally suitable for mounting and dismantling work on cylinder head screws, brake calliper screws, steering columns (e.g. Actros), wheel flange screws, oil draining screws, bumper, etc. Bits with 22 mm hexagon drive and the following profiles:

- T-profile T60, T70, T80, T90, T100
- Inner hexagon 17, 19, 22, 24 mm
- Outer E-profile E18, E20, E22, E24

Additional bit holder with 20 mm (3/4") and 25 mm (1") drive as well as 1 allen key for locking the bits in the holder grub screw.



07940L 106,00 EUR\*



**SW STAHL IMPACT SCREWDRIVER BIT, 3/4", HEXAGON**

- Impact resistant
- Chromium-molybdenum material
- Burnished surface
- With hole for locking pin



04552L	IMPACT screwdriver bit, 3/4", hexagon, 14 mm, 14 mm	10,10 EUR*
04553L	IMPACT screwdriver bit, 3/4", hexagon, 14 mm, 17 mm	10,10 EUR*
04554L	IMPACT screwdriver bit, 3/4", hexagon, 14 mm, 19 mm	10,10 EUR*
04555L	IMPACT screwdriver bit, 3/4", hexagon, 14 mm, 21 mm	10,60 EUR*
04556L	IMPACT screwdriver bit, 3/4", hexagon, 14 mm, 22 mm	10,60 EUR*
04558L	IMPACT screwdriver bit, 3/4", hexagon, 14 mm, 24 mm	10,60 EUR*

**SW STAHL IMPACT SCREWDRIVER BIT, 3/4", HEXAGONAL, 17 MM**

high-strength, for loosening the propeller shaft screws on different vehicles, e.g. VAG, BMW, Mercedes-Benz, etc.



10197L 10,10 EUR\*

**SW STAHL IMPACT SCREWDRIVER BIT, 3/4", SPLINE, M18**

For the mounting of the retaining screw of wheel hub / wheel bearing units on the rear axle of Audi A3, Golf V, Touran as well as similar skoda. The complete unit is attached to the axle journal and assembled with the multi-point screw.

- M18



301025L 11,70 EUR\*

**SW STAHL IMPACT SCREWDRIVER BIT, 3/4", SPLINE, M16, WITH HOLE**

- Impact resistant
- Chromium-molybdenum material
- Burnished surface
- With hole for locking pin



04559L 12,60 EUR\*

**SW STAHL IMPACT SCREWDRIVER BIT, 3/4", SPLINE, M18, WITH HOLE**

- Impact resistant
- Chromium-molybdenum material
- Burnished surface
- With hole for locking pin



04560L 12,60 EUR\*

**SW STAHL IMPACT-DUTY ADAPTER AND BALL JOINT SET, 1/4"-1", 11-PIECE**

Chromium molybdenum steel, suitable for use with impact wrench, with groove and bore adaptors:

- 6.3 mm (1/4") inner x 10 mm (3/8") outer
- 10 mm (3/8") inner x 6.3 mm (1/4") outer
- 10 mm (3/8") inner x 12.5 mm (1/2") outer
- 12.5 mm (1/2") inner x 10 mm (3/8") outer
- 12.5 mm (1/2") inner x 20 mm (3/4") outer
- 20 mm (3/4") inner x 12.5 mm (1/2") outer
- 20 mm (3/4") inner x 25 mm (1") outer
- 25 mm (1") inner x 20 mm (3/4") outer

Ball joints:

- 6,3 mm (1/4"), 10 mm (3/8"), 12,5 mm (1/2")



07935L 50,90 EUR\*

**SW STAHL IMPACT ENLARGER SOCKET, 20 MM (3/4") INNER X 25 MM (1") OUTER**

- Enlargement adapter 3/4" to 1"
- Suitable for use with impact wrench
- Chromium-molybdenum material
- Burnished surface
- With hole for locking pin



07934L 10,50 EUR\*

**SW STAHL IMPACT REDUCER SOCKET, 20 MM (3/4") INNER X 12,5 MM (1/2") OUTER**

Reducer socket



07937L 8,20 EUR\*

**SW STAHL IMPACT REDUCER SOCKET, 25 MM (1") INNER X 20 MM (3/4") OUTER**




07938L 13,80 EUR\*



**SW STAHL RATCHET WRENCH, 3/4"**

Chromium vanadium, with socket locking mechanism.



05950L 38,90 EUR\*

**SW STAHL LEVER RATCHET HANDLE, 1"**

removable head.



05959L 106,00 EUR\*

**SW STAHL JOINTED HEAVY-DUTY HANDLE, 1/2", 630 MM**

Chromium vanadium, suitable for transferring extremely high torques.



05911L 21,50 EUR\*

**SW STAHL JOINTED HEAVY-DUTY HANDLE, 1", 1,000 MM**

Chromium vanadium, suitable for transferring extremely high torques.



07662L 60,50 EUR\*

**SW STAHL RATCHET WRENCH, 3/4", TELESCOPIC EXTENSION**

With telescope extension to lock in 6 position from 610 - 1010 mm. Highly durable, 24 teeth, 15° swivel angle.



05958L 60,90 EUR\*

**SW STAHL HINGED EXTENSION SET, 1/4"+3/8"+1/2", 9-PIECE**

Chromium vanadium, chrome-plated. With support square for maximum stability during rigid use of extensions.

- 6.3 mm (1/4") drive: 50 - 100 - 225 mm
- 10 mm (3/8") drive: 75 - 150 - 225 mm
- 12.5 mm (1/2") drive: 50 - 125 - 250 mm



05985L 26,50 EUR\*

**SW STAHL JOINTED HEAVY-DUTY HANDLE, 3/4", 630 MM**

Chromium vanadium, suitable for transferring extremely high torques.



07661L 31,90 EUR\*

**SW STAHL SLIDING HANDLE, 1"**

Chromium vanadium, chrome-plated.

- Round steel 28 mm diameter

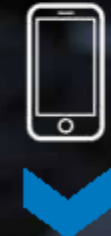


05963L 52,90 EUR\*

# tool-is

## OUR TOOL DATABASE

### WE'VE GOT YOUR TOOLS.

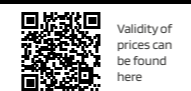


REGISTER NOW AND ACCESS  
ADDITIONAL CONTENT!

- ⊗ Fast and flexible online tool search
- ⊗ Real-time display of availability, promotion periods, and prices
- ⊗ Accessible on smartphones and tablets
- ⊗ Quick search with automatic suggestions
- ⊗ Keyword and full-text search
- ⊗ Search by OE numbers, engine codes, item numbers, or vehicle types
- ⊗ Available in German, English, and French
- ⊗ Create and manage watchlists



**www.tool-is.com**  
DROP BY AND SEE FOR YOURSELF!



Validity of prices can be found here

Validity of prices can be found here



**SW STAHL CRAFT BOX BIT SET, COMPACT, 1/4", 53-PIECE**

The compact and high-quality bit and socket spanner set with the unique 6.3 mm (1/4") mini bit ratchet from SW STAHL! Practical and elegant: the tool is safely stored in the handy nylon pouch and in a removable foam insert at all times.

- SW STAHL mini bit ratchet, 6.3 mm (1/4")
- Tool properties in accordance with the respective DIN specification
- Socket spanners made from chrome vanadium steel
- 6.3 mm (1/4") bits with practical colour coding ring and made from robust S2 steel material
- Socket spanner 4, 5, 5.5, 6, 7, 8, 9, 10, 11, 12, 13, 14 mm
- Screwdriver bits Cross PH and PZ1, Slot, T-profile and Hexago



DESIGNED  
IN GERMANY

04653L 59,90 EUR\*

**SW STAHL CRAFT BOX BIT SET, UNIVERSAL, 1/4", 62-PIECE**

The compact and high-quality bit and socket spanner set with the unique 6.3 mm (1/4") mini bit ratchet from SW STAHL! Practical and elegant: the tool is safely stored in the handy nylon pouch and in a removable foam insert at all times.

- SW STAHL mini bit ratchet, 6.3 mm (1/4")
- Tool properties in accordance with the respective DIN specification
- Socket spanners made from chrome vanadium steel
- 6.3 mm (1/4") bits with practical colour coding ring and made from robust S2 steel material
- Sockets 5.5, 6, 7, 8, 10, 11, 12, 13 mm
- Screwdriver bits 25, 50 and 89 mm long:
- Cross PH1 and PZ, slotted, T-profile and hexagon socket
- Allen key, hexagon socket with ball head 1.5, 2.0, 2.5, 3.0, 4.0, 5.0, 6.0 mm



DESIGNED  
IN GERMANY

04662L 79,90 EUR\*

**SW STAHL SCREWDRIVER SET, SLOT + CROSS, 6-PIECE**

- SW STAHL 2-component handle, blue/black
- With a hole in the handle for torque amplification
- Blade made of matt chrome-plated S2-steel
- With black, magnetic tip

Sizes: 3.0 mm, 4.0 mm, 5.5 mm, 6.5 mm, PH1, PH2

DESIGNED  
IN GERMANY

32810L 13,90 EUR\*



**SW STAHL SCREWDRIVER SET, SLOT, 5-PIECE**

- SW STAHL 2-component handle, blue/black
- With a hole in the handle for torque amplification
- Blade made of matt chrome-plated S2-steel
- With black, magnetic tip

Sizes: 2.0 mm, 3.0 mm, 4.0 mm, 5.5 mm, 6.5 mm

DESIGNED  
IN GERMANY

32811L 12,90 EUR\*



**SW STAHL SCREWDRIVER SET, T-PROFILE, 4-PIECE**

- SW STAHL 2-component handle, blue/black
- With a hole in the handle for torque amplification
- Blade made of matt chrome-plated S2-steel
- With black, magnetic tip

Sizes: T6, T7, T8, T9

DESIGNED  
IN GERMANY

32813L 9,90 EUR\*



**SW STAHL SCREWDRIVER SET, T-PROFILE, 6-PIECE**

- SW STAHL 2-component handle, blue/black
- With a hole in the handle for torque amplification
- Blade made of matt chrome-plated S2-steel
- With black, magnetic tip

Sizes: T10, T15, T20, T25, T27, T30

DESIGNED  
IN GERMANY

32812L 13,90 EUR\*



**SW STAHL SCREWDRIVER SET, SLOT + CROSS, 6-PIECE**

- SW STAHL 2-component handle, blue/black
- With a hole in the handle for torque amplification
- Blade made of matt chrome-plated S2-steel
- With black, magnetic tip

Sizes: 4.0 mm, 5.5 mm, 6.5 mm, 8.0 mm, PZ1, PZ2

DESIGNED  
IN GERMANY



reddot winner 2023

32814L 13,90 EUR\*

**SW STAHL SCREWDRIVER SET, SLOT + CROSS + T-PROFILE, 6-PIECE**

- SW STAHL 2-component handle, blue/black
- With a hole in the handle for torque amplification
- Blade made of matt chrome-plated S2-steel
- With black, magnetic tip

Sizes: 4.0 mm, 5.5 mm, PH1, PH2, T20, T25

DESIGNED  
IN GERMANY



reddot winner 2023

32815L 13,90 EUR\*

**SW STAHL SCREWDRIVER SET, IMPACT-PROOF, SLOT + CROSS, 5-PIECE**

- SW STAHL 2-component handle, blue/black
- **Impact-resistant screwdriver with impact cap**
- With hexagon socket for torque amplification
- Blade made of matt chrome-plated S2-steel
- With black, magnetic tip

Sizes: 4.5 mm, 5.5 mm, 8.0 mm, PH1, PH2

DESIGNED  
IN GERMANY



reddot winner 2023

32816L 19,90 EUR\*

**SW STAHL SAFETY SCREWDRIVER SET, ELECTRO, 7-PIECE**

with ergonomically shaped plastic handles, 1000 Volt.

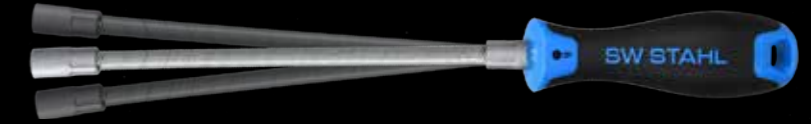
- Plain slot: 2.5 x 75 - 4 x 100 - 5.5 x 125 - 6.5 x 150 mm
- Cross slot: PH 1 x 80, 2 x 100 mm
- Voltage tester 3 x 60 mm



31610L 10,50 EUR\*

**SW STAHL SCREWDRIVER, HEXAGONAL, 6 X 200 MM, FLEXIBLE SHAFT**

- With flexible shaft
- 200 mm blade length
- Non-slip 2-component handle



DESIGNED  
IN GERMANY



reddot winner 2023

02096L 6,50 EUR\*

**SW STAHL SCREWDRIVER, HEXAGONAL, 7 X 200 MM, FLEXIBLE SHAFT**

- With flexible shaft
- 200 mm blade length
- Non-slip 2-component handle



DESIGNED  
IN GERMANY

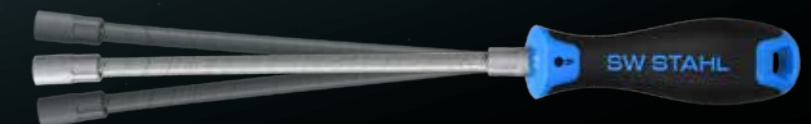


reddot winner 2023

02097L 6,50 EUR\*

**SW STAHL SCREWDRIVER, HEXAGONAL, 8 X 200 MM, FLEXIBLE SHAFT**

- With flexible shaft
- 200 mm blade length
- Non-slip 2-component handle



DESIGNED  
IN GERMANY



reddot winner 2023

02098L 7,50 EUR\*

**SW STAHL SCREWDRIVER SET, IMPACT, PLAIN+CROSS, 12-PIECE**

Made of chromium vanadium, with through, impact-proof 6-edge blade, hexagon socket drive for increasing torque and magnetised bronzed blades. 2K-handle with finely grooved surface.

- Plain slot screwdriver 3.2 to 9.5
- Cross slot screwdriver PH 0 - 4
- Different lengths



S7891 24,50 EUR\*

**SW STAHL SCREWDRIVER SET, T-PROFILE WITH HOLE, 8-PIECE**

Chrome vanadium, 2 component handle

- T 8 - 10 - 15 - 20 - 25 - 27 - 30 - 40



31500L 17,10 EUR\*



**SW STAHL ALLEN KEY SET, HEXAGONAL, BALL HEAD, 2-10 MM, 8-PIECE**

- Chromium Vanadium
- Long
- With ball head
- In patented holder
- Mounting angle up to 15°



04370SB 10,50 EUR\*

**SW STAHL ALLEN KEY SET, HEXAGONAL, BALL HEAD, 1.5-10 MM, 9-PIECE**

- Chromium vanadium
- Spheroid head with inlaid permanent magnet on the long handle
- Enables assembly angles up to 15°



04205SB 15,80 EUR\*

**SW STAHL ALLEN KEY SET, HEXAGON, BALL HEAD, 1,5-10 MM, NARROW, 9-PIECE**

- Chrome-vanadium
- One blade is extra short for where there is little space above the screw
  - One blade is extra long for the greatest possible torque
  - Inner hexagon version on the long blade as ball-head mounting angle up to 15°



04210SB 15,40 EUR\*

**SW STAHL ALLEN KEY SET, HEXAGONAL, BALL HEAD, 1/16"-3/8", 9-PIECE**

- Chromium vanadium
- With ball head on long leg
- Angled fitting up to 15°



S21-205 6,40 EUR\*

**SW STAHL ALLEN KEY SET, T PROFILE, T10-T50, 9-PIECE**

Chromium vanadium, in plastic box.



04410SB 8,40 EUR\*

**SW STAHL ALLEN KEY SET, T PROFILE, T10-T50, 8-PIECE**

- Chromium vanadium
- Extra long
- In patented holder
- Angled fitting up to 15°



04485SB 15,80 EUR\*

**SW STAHL ALLEN KEY SET, T-PROFILE, T10-T50, EXTRA LONG, 9-PIECE**

- Chromium vanadium
- One blade is extra short for where there is little space above the screw
  - One blade is extra long for the greatest possible torque
- Sizes:
- T10 - T15 - T20 - T25 - T27 - T30 - T40 - T45 - T50



04220SB 11,60 EUR\*

**SW STAHL ALLEN KEY SET, TR PROFILE, T10-T50, 8-PIECE**

- Size: T10, T15, T20, T25, T30, T40, T45, T50
- Chromium vanadium
- in patented holder



04484L 13,30 EUR\*

**SW STAHL ALLEN KEY SET, TPR PROFILE, T10-T50, 9-PIECE**

- Chromium vanadium
- Sizes:
- T10, T15, T20, T25, T27, T30, T40, T45, T50



04494L 21,00 EUR\*

**SW STAHL T-HANDLE SCREWDRIVER SET, HEXAGONAL, 8-10-13 MM, 3-PIECE**

Chromium vanadium, magnetic, with hanging hole.

- 8 x 230mm
- 10 x 230mm
- 13 x 230mm

DESIGNED  
IN GERMANY



red dot winner 2023

02052L	T-handle screwdriver set, hexagonal, 8-10-13 mm, 3-piece	29,90 EUR*
02071L	T-handle screwdriver, hexagonal, 8 mm	10,90 EUR*
02072L	T-handle screwdriver, hexagonal, 10 mm	11,50 EUR*
02073L	T-handle screwdriver, hexagonal, 12 mm	12,90 EUR*
02074L	T-handle screwdriver, hexagonal, 13 mm	13,90 EUR*



**SW STAHL T-HANDLE SCREWDRIVER SET, T PROFILE, T10-T40, 7-PIECE**

Chromium vanadium, with hanghole.

- T10 x 128 mm long
- T15 - 20 - 25 - 27 - 30 - 40 x 235 mm long



02020L 28,90 EUR\*

**SW STAHL T-HANDLE SCREWDRIVER**

Chrome vanadium S2 special steel, with hanghole



02010L	T-handle screwdriver, T10 x 100 mm	3,40 EUR*
02011L	T-handle screwdriver, T15 x 200 mm	3,90 EUR*
02012L	T-handle screwdriver, T20 x 200 mm	4,10 EUR*
02013L	T-handle screwdriver, T25 x 200 mm	4,20 EUR*
02014L	T-handle screwdriver, T27 x 200 mm	6,30 EUR*
02015L	T-handle screwdriver, T30 x 200 mm	6,70 EUR*
02016L	T-handle screwdriver, T40 x 200 mm	7,30 EUR*

**SW STAHL HANDSCHLAGSCHRAUBERSATZ, 8-TEILIG**

- Professional design, with protective handle, high-alloy slotted and cross blades in long and short versions
- 12.5 mm (1/2") drive, also suitable for socket inserts, switchable right/left
- Phillips PH2 and PH3 + slotted 8 and 10 mm, 36 mm long
- Phillips PH2 and slotted 8 mm, 80 mm long



04130L 31,90 EUR\*

**SW STAHL HANDSCHLAGSCHRAUBERSATZ, 12-TEILIG**

with oversize inner hex bits for worn screws, high-strength version. The tools are made with a slight oversize and are tapered. This means the bits can be struck into the screw head by means of a hammer and then loosened with a spanner or even better with the hand-held impact wrench included.



05040L 52,90 EUR\*

**SW STAHL HAND-HELD IMPACT WRENCH SET, 5-PIECE**

In metal box, with 2 cross and 2 slot impact bits



04103L 14,20 EUR\*

**SW STAHL HAND-HELD WRENCH SET, 5-PIECE**

with 2 cross and 2 plain slot blades each.



04100L 10,60 EUR\*

**SW STAHL PLIERS SET, 3-PIECE**

- Manufactured according to the respective DIN ISO 5745 / 5746 / 5749
- For holding, gripping, bending and cutting work
- Gripping zones for flat and round material
- For cutting soft and hard wires with tensile strength up to 1,800 N/mm<sup>2</sup> and aluminium and copper wire with up to 12 mm diameter
- Gripping teeth and cutting edges additionally induction hardened
- Special power joint with optimum lever transmission for easy and tireless work
- Made of chrome vanadium steel, forged, oil-hardened
- Finished with corrosion-resistant and durable „Teflon finish“ surface
- Ergonomic and non-slip 2-component handles
- „Designed in Germany“

DESIGNED  
IN GERMANY



reddot winner 2023

40200L 34,90 EUR\*

**SW STAHL MINI PLIERS SET, 3-PIECE**

The smart accompanists for everyday use. Practical, clever, high quality.

- Based on the respective DIN ISO 5746 / 5749 / 8976
- Extra-short overall lengths of 130 mm (hybrid pliers) / 110 mm (side cutter) / 125 mm (water pump pliers)
- For holding, gripping, bending and cutting work
- Gripping zones for flat and round material
- For cutting soft and hard wires
- Gripping teeth and cutting edges additionally induction hardened
- Special power joint with optimum lever transmission for easy and tireless work (hybrid pliers and side cutter)
- Box joint with wide guide surfaces and quick precise adjustment and release by pressing the button – with fine teeth (water pump pliers)
- Made of chrome vanadium steel, forged, oil-hardened
- Finished with corrosion-resistant and durable „Teflon finish“ surface
- Ergonomic and non-slip 2-component handles on the side cutter and hybrid pliers; roughened handle surface on the water pump pliers
- „Designed in Germany“

DESIGNED  
IN GERMANY



40300L 39,90 EUR\*



**SW MINI WATER PUMP PLIERS, 125 MM**

- For holding, gripping and bending work with maximum socket size or maximum head diameter of 27 mm
- Extra short overall length of 125mm
- Compact, narrow shape with optimum jaw geometry for working in confined spaces and positions otherwise inaccessible
- Quick precise adjustment and release by pressing the button – with fine teeth
- Double-toothed jaws with self-locking serration
- Gripping teeth additionally induction hardened
- Box joint with wide guide surfaces
- Finger trap protection for safe work, prevents injuries caused by squeezing
- Made of chrome vanadium steel, forged, oil-hardened
- Finished with corrosion-resistant and durable „Teflon finish“ surface
- Non-slip handle with roughened surface
- „Designed in Germany“



40383L 16,90 EUR\*

**SW WATER PUMP PLIERS, 250 MM**

- Manufactured according to DIN ISO 8976
- For holding, gripping and bending work
- Suitable for maximum socket size or maximum head diameter 50 mm
- Compact, narrow shape with optimum jaw geometry for working in confined spaces and positions otherwise inaccessible
- Quick precise adjustment and release by pressing the button – with fine teeth
- Double-toothed jaws with self-locking serration
- Gripping teeth additionally induction hardened
- Box joint with wide guide surfaces
- Finger trap protection for safe work, prevents injuries caused by squeezing
- Made of chrome vanadium steel, forged, oil-hardened
- Finished with corrosion-resistant and durable „Teflon finish“ surface
- Optimum handle position and shape for best power transmission
- Ergonomic and non-slip 2-component handles
- „Designed in Germany“



40387L 22,90 EUR\*

**SW LEVER-FORCE SIDE CUTTER, 200 MM**

- Manufactured according to DIN ISO 5749
- Precision cutting edge for piano wire (D2 quality)
- Cutting edge hardness approx. 62 HRC
- Cutting edges additionally induction hardened
- For cutting soft and hard wires with tensile strength up to 1,800 N/mm<sup>2</sup> and piano wire with up to 2.300N/mm<sup>2</sup> and 2,5 mm diameter
- Special power joint with optimum lever transmission for easy and tireless work
- Made of chrome vanadium steel, forged, oil-hardened
- Finished with corrosion-resistant and durable „Teflon finish“ surface



40685L 24,90 EUR\*

**SW COMBINATION PLIERS, 180 MM**

- Manufactured according to DIN ISO 5746
- For holding, gripping, bending and cutting work
- Gripping zones for flat and round material
- For cutting soft and hard wires with tensile strength up to 1,800 N/mm<sup>2</sup> and aluminium and copper wire with up to 12 mm diameter
- Gripping teeth and cutting edges additionally induction hardened
- Special power joint with optimum lever transmission for easy and tireless work
- Made of chrome vanadium steel, forged, oil-hardened
- Finished with corrosion-resistant and durable „Teflon finish“ surface



40484L 12,90 EUR\*

**SW MINI SIDE CUTTER, 110 MM**

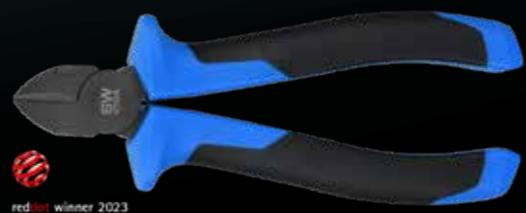
- Based on the respective DIN ISO 5749
- Extra-short overall lengths of 110 mm
- Precision cutting edge for finest wires
- Cutting edge hardness approx. 62 HRC
- Cutting edges additionally induction hardened
- For cutting soft, hard, aluminium and copper wires
- Special power joint with optimum lever transmission for easy and tireless work
- Made of chrome vanadium steel, forged, oil-hardened
- Finished with corrosion-resistant and durable „Teflon finish“ surface
- Ergonomic and non-slip 2-component handles
- „Designed in Germany“



40581L 14,90 EUR\*

**SW SIDE CUTTER, 160 MM**

- Manufactured according to DIN ISO 5749
- Precision cutting edge for finest wires
- Cutting edge hardness approx. 62 HRC
- Cutting edges additionally induction hardened
- For cutting soft and hard wires with tensile strength up to 1,800 N/mm<sup>2</sup> and aluminium and copper wire with up to 11 mm diameter
- Special power joint with optimum lever transmission for easy and tireless work
- Made of chrome vanadium steel, forged, oil-hardened
- Finished with corrosion-resistant and durable „Teflon finish“ surface



40583L 14,90 EUR\*

**SW TELEPHONE PLIERS, STRAIGHT, 200 MM**

- For holding, gripping, bending and cutting work
- With long, flat-round jaws
- Serrated inside jaws
- For cutting soft and hard wires with tensile strength up to 1,800 N/mm<sup>2</sup> and aluminium and copper wire with up to 13 mm diameter
- Gripping teeth and cutting edges additionally induction hardened
- Made of chrome vanadium steel, forged, oil-hardened
- Finished with corrosion-resistant and durable „Teflon finish“ surface



40785L 12,90 EUR\*

**SW TELEPHONE PLIERS, BENT, 200 MM**

- For holding, gripping, bending and cutting work
- With long, 45°-angled, flat-round jaws
- Serrated inside jaws
- For cutting soft and hard wires with tensile strength up to 1,800 N/mm<sup>2</sup> and aluminium and copper wire with up to 13 mm diameter
- Gripping teeth and cutting edges additionally induction hardened
- Made of chrome vanadium steel, forged, oil-hardened
- Finished with corrosion-resistant and durable „Teflon finish“ surface



40885L 12,90 EUR\*



**SW STAHL PIPE WRENCH SET, 3-PIECE**

- Forged
- With "S"-jaws
- Powerful hold and slip-off protection thanks to 3-point grip
- Painted blue, jaws polished
- 1 - 1.5 - 2 inches



42250L	Pipe wrench set, 3-piece	42,50 EUR*
42210L	Pipe wrench, 1", 335 mm	11,50 EUR*
42220L	Pipe wrench, 1,5", 420 mm	13,60 EUR*
42230L	Pipe wrench, 2", 525 mm	21,90 EUR*

**SW STAHL SCISSOR-TYPE JOINTED PLIERS, 350 MM, STRAIGHT**

for spots that are difficult to access, e.g. behind the interior trim, dashboard, engine compartment etc.

- Thanks to the double joint, the pliers remain slim even when fully opened, extending their working length for use in much deeper spots



40711L 20,00 EUR\*

**SW STAHL SCISSOR-TYPE JOINTED PLIERS, BENT, 350 MM**

for spots that are difficult to access, e.g. behind the interior trim, dashboard, engine compartment etc.

- Thanks to the double joint, the pliers remain slim even when fully opened, extending their working length for use in much deeper spots



40712L 21,00 EUR\*

**SW STAHL RABITZ PLIERS, DIN 9242A, 220 MM**

according to DIN ISO 9242A



40210L 7,00 EUR\*

**SW STAHL BOLT CUTTER, 620 MM**

Legs made of tubular steel, with adjustable knives, with rubber handles. With a Shore hardness of 58 + - 2 HRC.



45060L 18,90 EUR\*

**SW STAHL GRIPPING PLIERS SET, 16-PIECE**

with non-slip handles

- 10 universal-gripping pliers, 2x 130 mm, 3x 180mm, 5x 225mm
- 2 welder's locking pliers, 225 mm
- 2 langbeck locking pliers, 160mm, 225 mm
- 2 spot welding locking pliers, 280 mm



41560L 106,00 EUR\*

**SW STAHL LOCKING PLIERS, 100 MM**

- Mini
- Universal version
- Semi-circular jaws
- Chrome-plated
- 6 rivets



41501L 5,30 EUR\*

**SW STAHL LOCKING PLIERS, 250 MM**

- With forged jaws
- With wire cutter



41500L 9,40 EUR\*

**SW STAHL LOCKING PLIERS, 250 MM**

- With forged cheeks
- With wire cutter
- Adjustable
- Release lever vinyl- insulated
- Clamping range up to 32 mm



41502L 9,40 EUR\*

**SW STAHL LOCKING PLIERS, 170 MM**

with extra slim head for hard-to-reach areas



41520L 5,70 EUR\*

**SW STAHL LOCKING PLIERS, 225 MM**

with extra slim head for hard-to-reach areas



41521L 8,00 EUR\*

**SW STAHL CIRCLIP PLIERS, BENT, 220 MM**

for wheel bearing circlips according to DIN 472 and 984, max tip diameter according to DIN 5256: 2.3 mm, for bore diameters of 40 - 100 mm, anti-slip handle. The 45° angle of the tips enables precise work. Two available sizes cover all standard ranges of circlips used on wheel bearings.



42900L 21,00 EUR\*



Validity of prices can be found here

Validity of prices can be found here



**SW STAHL CIRCLIP PLIERS, BENT, 220 MM**

for wheel bearing circlips according to DIN 472 and 984, max tip diameter according to DIN 5256: 2.3 mm, for bore diameters of 40 - 100 mm, anti-slip handle. The 45° angle of the tips enables precise work. Two available sizes cover all standard ranges of circlips used on wheel bearings.



41310L 21,00 EUR\*

**SW STAHL CIRCLIP PLIERS, OUTER, STRAIGHT, 175 MM**

according to DIN, forged, chrome-plated.

- Sturdy shape
- Non-slip precision tips
- Titan finish
- Insulated handles
- For circlips 19 - 60 mm



41301L 13,70 EUR\*

**SW STAHL CIRCLIP PLIERS, OUTER, BENT, 175 MM**

according to DIN, forged, chrome-plated.

- Sturdy shape
- Non-slip precision tips
- Titan finish
- Insulated handles
- For circlips 19 - 60 mm



41302L 13,80 EUR\*

**SW STAHL CIRCLIP PLIERS, INNER, STRAIGHT, 175 MM**

according to DIN, forged, chrome-plated.

- Sturdy shape
- Non-slip precision tips
- Titan finish
- Insulated handles
- For circlips 19 - 60 mm



41401L 13,70 EUR\*

**SW STAHL CIRCLIP PLIERS, INNER, BENT, 175 MM**

according to DIN, forged, chrome-plated.

- Sturdy shape
- Non-slip precision tips
- Titan finish
- Insulated handles
- For circlips 19 - 60 mm



41402L 13,80 EUR\*

**SW STAHL SPRING CLAMP PLIERS WITH BOWDEN CABLE**

For self-tensioning spring band clamps measuring 18 - 54 mm and fitted to fuel and radiator hoses.

- With bowden cable for use anywhere, even in hard-to-reach places
- Secure grip thanks to lever lock



E.g. for Alfa, Audi, Citroën, Fiat, Ford, Hyundai, and so on.

61777L 42,50 EUR\*

**SW STAHL BAND-TYPE CLAMP PLIERS, STRAIGHT, LOCKABLE**

for spring-loaded band-type clamps, clamp seat can be turned.



61760L 12,50 EUR\*

**SW STAHL UNIVERSAL PULLER**

- Span depth 200 mm
- Drop forged
- Spindle with fine thread
- Interchangeable centring ball



MADE IN GERMANY

10824L	Universal puller, 2-jaw, 80 - 250 mm	204,90 EUR*
10825L	Universal puller, 2-jaw, 80 - 350 mm	239,00 EUR*
10826L	Universal puller, 2-jaw, 110 - 520 mm	334,90 EUR*

**SW STAHL BALL JOINT PULLER, HYDRAULIC, TRUCK**

For quick and professional removal of ball joints on tie rods and suspension joints. The grease hydraulic spindle can also be used to loosen very tight ball joints.

- Reinforced design
- Fork opening: 45 mm
- Clearance height: max. 115 mm
- Grease hydraulic spindle: max. 15 t



12104L 371,00 EUR\*

**SW STAHL BALL-JOINT EXTRACTOR, HYDRAULIC, 7 T**

For quick and easy removal of ball joints on commercial vehicles, agricultural and construction machinery.

- Span up to 72 mm
- Fork opening rotatable, 25 mm / 32 mm
- Maximum load 7 t
- With grease hydraulics



10999L 133,90 EUR\*

**SW STAHL THERMOMETER, INFRARED, DIGITAL**

with laser pointer, automatic shutdown, illuminated digital display, ideal for measurements on hot or rotating parts, liquids or spots that are difficult to reach.

- Measuring range -50 to + 550°C
- Measuring accuracy +/- 2.5 %
- Operating temperature: 0° - 50°C
- Distance factor 12 : 1
- Switchable °F / °C
- Incl. 2x AAA battery



72360L 45,50 EUR\*

**SW STAHL PRECISION DIAL GAUGE, 1/100 MM**

from diesel special tool set 26060L.



26067L 21,00 EUR\*



**SW STAHL BRAKE DISC CALLIPER, DIGITAL, 80 MM**

Technical data:

- Measuring range from 0 to 80 mm / 0 to 3.2"
- Depth of the external measuring jaws 28 mm / 1.10"
- Resolution 0.01 mm / 0.0005"
- Accuracy ± 0.025 mm / ± 0.001"
- LCD display
- Sturdy, hardened stainless steel
- Automatic shutdown
- Includes 3 V CR2032 battery



72347L 58,50 EUR\*

**SW STAHL CALIPER GAUGE, DIGITAL, 150 MM**

Rust-free, in a box.

- With depth measurement
- 150 mm measuring range
- With mm/inch scale, indicating nonius 1/100 mm
- Adjustable 0-position and mm/inch setting
- +/- display
- Inc. battery



72350L 26,50 EUR\*

**SW STAHL LOCKSMITH'S HAMMER SET, FIBREGLASS HANDLE, 3-PIECE**

- Forged
- With fibreglass handle
- Absolutely „wobble-free“ attachment
- Handle area with rubber insulation
- Head weights: 300 - 500 - 800 g



50430L	Locksmith's hammer set, fibreglass handle, 3-piece	15,80 EUR*
50403L	Locksmith's hammer, fibreglass handle, 300 g	5,20 EUR*
50405L	Locksmith's hammer, fibreglass handle, 500 g	5,70 EUR*
50408L	Locksmith's hammer, fibreglass handle, 800 g	6,60 EUR*
50410L	Locksmith's hammer, fibreglass handle, 1.000 g	8,40 EUR*
50420L	Locksmith's hammer, fibreglass handle, 2.000 g	13,40 EUR*

**SW STAHL THREAD CUTTING TOOL SET, TIN, M2-M18, 110-PIECE**

- Normal threads
- Fine threads
- Tool holder
- Die holder
- Adapter



82251L 144,00 EUR\*

**SW STAHL HAMMER ASSORTMENT, WITH HEAD PROTECTION, 3-PIECE**

High-quality hammer assortment for maximum working safety.

- Hickroy handle, extremely impact-proof
- Safety pin
- Round safety wedge
- Forged head
- Manufactured according to DIN 1041

Head weights: 300 - 500 - 800 g



50930L	Hammer assortment, with head protection, 3-piece	18,60 EUR*
50903L	Hammer, with handle protection, 300 g	6,30 EUR*
50905L	Hammer, with handle protection, 500 g	6,80 EUR*
50908L	Hammer, with handle protection, 800 g	7,60 EUR*
50910L	Hammer, with handle protection, 1.000 g	8,40 EUR*
50915L	Hammer, with handle protection, 1.500 g	10,50 EUR*
50920L	Hammer, with handle protection, 2.000 g	14,40 EUR*

**SW STAHL CLUB HAMMER**

forged, with wooden handle.



50201L	Club hammer, 1.000 g	9,30 EUR*
50903L	Club hammer, 1.250 g	10,20 EUR*
50905L	Club hammer, 1.500 g	11,00 EUR*
50908L	Club hammer, 2.000 g	14,50 EUR*



**SW STAHL SLEDGEHAMMER, FIBREGLASS HANDLE, 5,000 G**

- With fibreglass handle
- The hammer head is wedged and cast
- Coated matt black
- Length approx. 900 mm
- Non-slip rubber handle



50610L 34,50 EUR\*

**SW STAHL SLEDGEHAMMER**

forged, with wooden handle.



50600L	Sledgehammer, 3.000 g	31,90 EUR*
50601L	Sledgehammer, 4.000 g	37,00 EUR*
50602L	Sledgehammer, 5.000 g	42,50 EUR*
50603L	Sledgehammer, 6.000 g	63,50 EUR*
50604L	Sledgehammer, 8.000 g	84,90 EUR*
50605L	Sledgehammer, 10.000 g	106,00 EUR*

**SW STAHL RUBBER HAMMER, FIBREGLASS HANDLE, 500 G**

with fibreglass shaft, head diameter 60 mm



50705L 10,50 EUR\*

**SW STAHL RUBBER HAMMER, FIBREGLASS HANDLE, 1,200 G**

with fibreglass shaft, head diameter 76 mm



50712L 13,70 EUR\*

**SW STAHL NON-RECOIL HAMMER, WITHOUT RECOIL, 1,200 G**

- Without recoil
- Completely rubberised
- Made of polyurethane glass fibre
- The hammer does not recoil thanks to steel balls in the hammer head
- Especially for use during tyre changing for loosening rims that have become rusted tight



51112L 18,60 EUR\*

**SW STAHL NON-RECOIL HAMMER, 5,250 G**

non-recoil, completely rubberised.

- Made of polyurethane glass fibre
- The steel balls in the hammer head prevent the hammer recoiling
- Especially for use during tyre changing, for loosening rims that have become rusted tight



51115L 47,50 EUR\*

**SW STAHL BODY CHISEL, 240 MM**

with hand protection, secured impact head.



94000L 13,30 EUR\*

**SW STAHL MINI GREASE GUN INCLUDING GREASE BAG, 80 G**

SW-Stahl mini grease gun, including a tube of grease (80 g) for filling the grease gun.

- The ideal assistant for regular maintenance of impact driver hammer mechanisms
- Helps to ensure that impact drivers enjoy a long service life
- Suitable for almost all impact drivers



64311L 14,20 EUR\*

**SW STAHL PNEUMATIC GREASE GUN**

volume 400 ccm, complete with

- nozzle pipe
- hydraulic mouthpiece
- reinforced hose



64350L 58,50 EUR\*

**SW STAHL PNEUMATIC IMPACT WRENCH**

- High performance twin hammer mechanism
- Threefold torque selection
- Fatigue-proof work due to low net weight
- Single handed switching for clockwise/anticlockwise running
- Very low vibration
- Ergonomic 2-component (TPR+Nylon) handle with special non-slip texture
- 1/4" inlet nipple included



reddot winner 2025

DESIGNED  
IN GERMANY

S3460	Pneumatic IMPACT wrench, 1/2", 1.800 Nm	66,90 EUR*
S3465	Pneumatic IMPACT wrench, 1/2", 1.300 Nm, 118 mm	72,00 EUR*
S3470	Pneumatic IMPACT wrench, 3/4", 1.900 Nm	72,00 EUR*



Validity of prices can be found here

Validity of prices can be found here



**SW STAHL PNEUMATIC ANGLE IMPACT WRENCH, 1/2", 450 NM**

- 12.5 mm (1/2") drive.
- With extremely low design height of 69 mm, for spots that are hard to reach
  - Jumbo hammer mechanism for undoing screws that are stuck
  - Extremely lightweight (1.16 kg) and easy to hold for long periods of time without tiring
  - Single-handed switching for clockwise/anti-clockwise running
  - 3 torque settings for clockwise running
  - Includes 6.3 mm (1/4") pneumatic connector



S3296 135,90 EUR\*

**SW STAHL PNEUMATIC IMPACT WRENCH, 1/2", 1,300 NM**

- 12.5 mm (1/2") drive.
- High-performance twin hammer mechanism
  - Extremely lightweight and easy to hold for long periods of time without tiring
  - Function for switching between clockwise /anti-clockwise running
  - Very quiet; protects hearing
  - Very low-vibration
  - 3 torque settings
  - With non-slip handle
  - Includes 6.3 mm (1/4") pneumatic connector



S3275 156,90 EUR\*

**SW STAHL PNEUMATIC IMPACT DRIVER, 1", 3200 NM**

- 25 mm (1") drive.
- High-performance twin hammer mechanism
  - Very light aluminium housing
  - Very quiet; protects hearing
  - Low-vibration
  - 3 torque settings
  - With non-slip handle
  - Includes 10 mm (3/8") pneumatic connector



S3278 313,50 EUR\*

**SW STAHL PNEUMATIC IMPACT WRENCH, 1", 3,800 NM**

- 25 mm (1") drive.
- Short drive spindle
  - High-performance twin hammer mechanism
  - Very light aluminium housing
  - Low-vibration
  - 3 torque settings
  - Includes 12.5 mm (1/2") pneumatic connector



S3279 574,90 EUR\*

**SW STAHL PNEUMATIC IMPACT WRENCH, 1/2", 1,756 NM**

- 12.5 mm (1/2") drive.
- High-performance twin hammer mechanism
  - Extremely lightweight and easy to hold for long periods of time without tiring
  - Function for switching between clockwise /anti-clockwise running
  - Very quiet; protects hearing
  - Very low-vibration
  - 3 torque settings
  - With non-slip handle
  - Includes 6.3 mm (1/4") pneumatic connector



S3276 156,90 EUR\*

**SW STAHL PNEUMATIC IMPACT WRENCH, 3/4", 3,200 NM**

- 20 mm (3/4") drive.
- High-performance twin hammer mechanism
  - Very light aluminium housing
  - Very quiet; protects hearing
  - Low-vibration
  - 3 torque settings
  - With non-slip handle
  - Includes 10 mm (3/8") pneumatic connector



S3277 313,50 EUR\*

**SW STAHL PNEUMATIC IMPACT WRENCH, 1", 3,800 NM**

- 25 mm (1") drive.
- Long drive spindle, 210 mm
  - High-performance twin hammer mechanism
  - Very light aluminium housing
  - Low-vibration
  - 3 torque settings
  - Includes 12.5 mm (1/2") pneumatic connector



S3280 627,00 EUR\*

**SW STAHL PNEUMATIC IMPACT RATCHET WRENCH, 1/2", 122 NM**

- This impact ratchet wrench with pin clutch impact mechanism is perfect for loosening and tightening very tight screw connections.
- Special features:
- Pin clutch impact mechanism
  - Non-rebound mechanism for low impact work
  - Cold insulated and non-slip handle
  - Easy to switch (left / right)
  - Includes 6.3 mm (1/4") pneumatic connector



S3290 167,00 EUR\*



**SW STAHL MINI PNEUMATIC RATCHET WRENCH, 1/4" AND 3/8"**

- With interchangeable drive (1/4" and 3/8")
- Ratchet head protected against dirt
- Easy to switch (left / right) by turning the interchangeable drive
- Cold insulated and non-slip handle
- Extremely lightweight and easy to hold for long periods of time without tiring
- Rear exhaust through the handle
- Very low-vibration
- Includes 6.3 mm (1/4") pneumatic connector



S3291 125,50 EUR\*

**SW STAHL PNEUMATIC RATCHET WRENCH, 1/4", 41 NM**

- Fatigue-proof work as a result of extremely low net weight
- Very quiet
- Rear exhaust
- Cold insulated and anti-slip handle
- Very low-vibration



S3281 56,90 EUR\*

**SW STAHL PNEUMATIC RATCHET WRENCH, 3/8", 41 NM**

- Ratchet head protected against dirt
- Easy to switch (left / right)
- Rear exhaust
- Cold insulated and anti-slip handle
- Includes 6.3 mm (1/4") pneumatic connector



S3282 56,90 EUR\*

**SW STAHL PNEUMATIC RATCHET WRENCH, 1/2", 68 NM**

- Fatigue-proof work as a result of extremely low net weight
- Gentle on hearing due to low sound pressure levels
- Rear exhaust
- Cold insulated and anti-slip handle
- Very low-vibration



S3283 71,00 EUR\*

**SW STAHL 2-WAY AIR PISTOL WITH REGULATION AND VENTURI NOZZLE, 4-PIECE**

- Allows working pressure regulation through „Flow Control“ function
  - With three interchangeable nozzles
  - Compressed air connection: 1/4"
- Content:**
- 2-way air pistol
  - Short nozzle: 24 mm
  - Long nozzle: 119 mm
  - Venturi nozzle: 83 mm
  - Plastic scratch protection for the long nozzle



25011L 12,10 EUR\*

**SW STAHL BLOW-OUT GUN FOR COMPRESSED AIR, 100 MM**

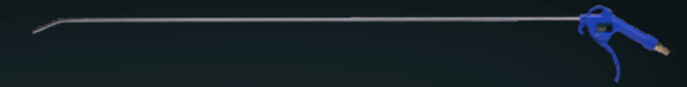
made of seamless, chrome-plated steel tube, handle made of blue nylon fibre, (1/4") inner thread.



21518L 5,40 EUR\*

**SW STAHL BLOW-OUT GUN FOR COMPRESSED AIR, 1000 MM**

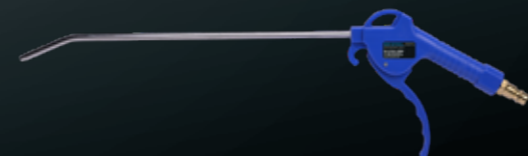
made of seamless, chrome-plated steel tube, handle made of blue nylon fibre, (1/4") inner thread.



21514L 10,40 EUR\*

**SW STAHL BLOW-OUT GUN FOR COMPRESSED AIR, 250 MM**

made of seamless, chrome-plated steel tube, handle made of blue nylon fibre, (1/4") inner thread.



21517L 7,20 EUR\*

**SW STAHL BLOW-OUT GUN FOR COMPRESSED AIR, 375 MM**

made of seamless, chrome-plated steel tube, handle made of blue nylon fibre, (1/4") inner thread.



21516L 9,30 EUR\*

**SW STAHL PNEUMATIC AXIAL GRINDER, 1/4", STRAIGHT**

for grinding, milling, deburring etc., with 6 mm collet chuck.

- Inc. 6.3 mm (1/4") pneumatic connection incl. plug nipple
- Max. 22,000 rpm
- Exhaust air outlet at the rear
- Safety lever prevents unintentional switch-on



S3260 31,50 EUR\*



**SW STAHL PNEUMATIC AXIAL GRINDER, 1/4", 90° ANGLED**

for grinding, milling, deburring etc., with 6 mm (1/4") collet chuck.

- Inc. 6.3 mm (1/4") pneumatic connection incl. plug nipple
- Max. 18,000 rpm
- Exhaust air outlet at the rear
- Safety lever prevents unintentional switch-on



S3265 41,90 EUR\*

**SW STAHL PNEUMATIC ANGLE GRINDER**

The powerful pneumatic motor is perfect for grinding, cutting and roughing.

- Output: 1.04 KW (1.4 HP)
- Speed: 12,000 rpm
- For grinding discs with a diameter of max. 125 x 22.2 mm
- For grinding discs with a thickness of 0.8 - 6 mm
- Spindle thread: M14 x 2
- Includes 6.3 mm (1/4") pneumatic connector



S3297 177,50 EUR\*

**SW STAHL PNEUMATIC MINI ANGLE GRINDER, 16-PIECE**

Suitable for small-scale repairs, particularly in hard-to-reach places.

- Max. 20,000 revolutions per minute
- For discs with max. Ø 50 mm, arbour hole Ø 10 mm
- Includes 1/4" pneumatic connector

The set contains the following components:

- 1 mini pneumatic angle grinder
- 9x grinding discs Ø 50 mm
- 5x cutting discs Ø 50 mm
- 1x safety glasses



S3294 120,00 EUR\*

**SW STAHL PNEUMATIC ANGLE GRINDER, LONG VERSION**

- Extra long flat head
- For 100 mm grinding wheel size
- Grinding wheel adapter 16 mm
- Speed: 14,000 rpm

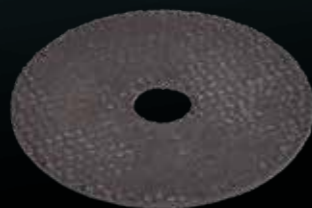


S3268 177,50 EUR\*

**SW STAHL CUTTING WHEEL, 50 MM**

suitable for use with mini air angle grinder S3294.

- Diameter 50 mm



S3294-T 17,70 EUR\*

**SW STAHL ROUGHING DISC, DIAMETER 50 MM / GRIT 80**

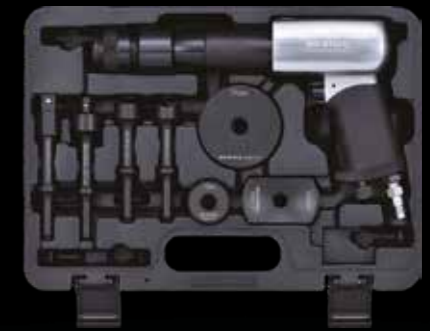
10-piece



S3294-80 20,90 EUR\*

**SW STAHL VIBRO PNEUMATIC CHISEL SET**

- when loosening nuts and screw connections which have rusted tight
- for pressing the supporting joint cone out of the rear axle
- with rust solvents, since they penetrate deeper due to the vibration
- incl. compressed air nipple 1/4"
- with quick-action chuck
- with backlash damping
- stroke rate: 2100/min.
- chisel shaft: around 10 mm
- working stroke: 10 mm
- working pressure: 6.2 bar



S3211 209,00 EUR\*

**SW STAHL NEEDLE SCALER ATTACHMENT**

The needle scaler attachment is used for the removal of coatings on solid metal parts. With the metal needles it is the perfect tool to get rust off rims, frame parts or iron fences. The needle scaler is an attachment to pneumatic chippings from sets S3211 and S3213.

Main features:

- 19 needles with diameter 2,8 mm each
- Diameter of inner stud 10,1 mm
- Diameter of support of thread ~ 30,5 mm



S3215 31,50 EUR\*

**SW STAHL COMPRESSED AIR UNDERBODY PROTECTION GUN**

suitable for all standard cartridges, with cavity hose 500 mm.



25050L 26,00 EUR\*

**SW STAHL PNEUMATIC BELT GRINDER**

for use with a range of grinding belt granulations in the dimensions 10 x 330 mm.

- 360° grind arm articulation with lock function
- Protected drive unit
- Protected against sparks
- Includes 6.3 mm (1/4") pneumatic connector
- Includes 3 grinding belts (80, 120 and 180 granulation)



S3295 104,50 EUR\*

**SW STAHL SPARE BELT**

grain size 80, suitable for belt sander S3295. Size 10 x 330 mm



S3295-1	Spare belt, grain size 80, 10 piece	8,40 EUR*
S3295-2	Spare belt, grain size 120, 10 piece	8,40 EUR*
S3295-3	Spare belt, grain size 180, 10 piece	8,40 EUR*
S3295-5	Spare belt, grain size 80+120+180, 15 piece	8,40 EUR*



**SW STAHL PNEUMATIC PAINTING GUN, 0,12 L**

Compact version 120 ccm.

- Aluminium housing
- Chrome-plated finish
- PP tank 120 ccm, with filter
- Rustproof spraying head (0.8 mm)
- EURO quick-action pneumatic connection



25005L 23,50 EUR\*

**SW STAHL COMPRESSED AIR SPRAY GUN**

with cup, 0.9l volume, suitable for:

- Solvents
- Rust protection agents
- Lubricants and cleaning agents



25020L 19,80 EUR\*

**SW STAHL PNEUMATIC SANDBLASTING GUN**

- Heavy-duty ABS housing
- Blasting sand tank capacity 600 cm<sup>3</sup>
- For use with regular aluminium oxide grit F46 to F100
- 5 mm steel tip



25070L 28,00 EUR\*

**SW STAHL PNEUMATIC SANDBLASTING GUN, 6-PIECE**

Ideal for numerous applications on vehicle bodies and all metallic surfaces. For the removal of old paint, rust, heavy soiling.

- Working pressure 4 - 8 bar
- Air consumption max. 350 l/min



25065L 28,00 EUR\*

**SW STAHL COMPRESSED AIR MAINTENANCE UNIT**

The compressed air service unit consists of a pressure regulator, water trap and oil-fog lubricator (12.5 mm (1/2"))

- Maintenance unit with connection for air supply and 2 quick couplings incl. pressure gauge
- Air pressure in the intake: max. 15 bar
- Adjustment range of the regulator: 0.5 ~ 11 bar
- Flow rate: 3,100 l/min



25029L 94,00 EUR\*

**SW STAHL WINDING DRUM FOR COMPRESSED AIR HOSE, 1/2", 15 M**

Suitable for wall and ceiling mounting, PVC hose with adjustable hose stopper.

- Hose lockable at 0.1 m intervals when unreeled
- 0.5 m hose connector
- 15 m usable hose
- Complete with 1/4" quick couplings
- With automatic recoil mechanism
- Internal hose diameter: 12.5 mm
- External hose diameter: 18.8 mm



25061L 104,50 EUR\*

**SW STAHL HOSE FOR COMPRESSED AIR, INNER DIAMETER 6 MM, 10 M**

with quick-action couplings.



25045L 12,50 EUR\*

**SW STAHL PNEUMATIC HELICAL HOSE, INNER DIAMETER 6 MM, 10 M**

with quick-action couplings.



25040L 19,80 EUR\*

**SW STAHL PNEUMATIC HELICAL HOSE, 10 M**

with nickel-plated quick couplings.

- Internal hose diameter: 10 mm
- External hose diameter: 14 mm
- Total length (extended): 10 m
- Material: Polyurethane
- Working pressure: 6.9 bar / 100 psi
- Bursting pressure: 20.7 bar / 300 psi
- Connecting thread: 10 mm (3/8")



25051L 31,50 EUR\*



**SW STAHL PROFESSIONAL TORQUE WRENCH, 1/4", 5-25 NM**

- Calibrated torque wrench with certificate and serial number
- Accuracy of  $\pm 4\%$
- For the controlled right tightening
- With reversible ratchet head
- Direct numerical display of the desired torque value
- Secure locking of the rotary handle by means of push-button
- Extra fine scale graduation
- Ergonomically designed 2-component handle
- Service-friendly as repair kits are available



03871L 99,90 EUR\*

**SW STAHL PROFESSIONAL TORQUE WRENCH, 3/8", 10-50 NM**

- Calibrated torque wrench with certificate and serial number
- Accuracy of  $\pm 4\%$
- For the controlled right tightening
- With reversible ratchet head
- Direct numerical display of the desired torque value
- Secure locking of the rotary handle by means of push-button
- Extra fine scale graduation
- Ergonomically designed 2-component handle
- Service-friendly as repair kits are available



03872L 99,90 EUR\*

**SW STAHL PROFESSIONAL TORQUE WRENCH, 1/2", 60-340 NM**

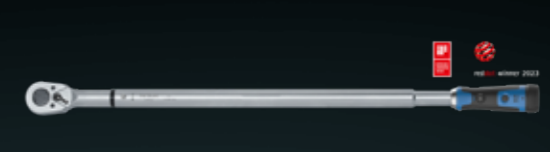
- Calibrated torque wrench with certificate and serial number
- Accuracy of  $\pm 4\%$
- For the controlled right tightening
- With reversible ratchet head
- Direct numerical display of the desired torque value
- Secure locking of the rotary handle by means of push-button
- Extra fine scale graduation
- Ergonomically designed 2-component handle
- Service-friendly as repair kits are available



03875L 119,90 EUR\*

**SW STAHL PROFESSIONAL TORQUE WRENCH, 3/4", 110-550 NM**

- Calibrated torque wrench with certificate and serial number
- Accuracy of  $\pm 4\%$
- For the controlled right tightening
- With reversible ratchet head
- Direct numerical display of the desired torque value
- Secure locking of the rotary handle by means of push-button
- Extra fine scale graduation
- Ergonomically designed 2-component handle
- Service-friendly as repair kits are available



03876L 499,90 EUR\*

**SW STAHL PROFESSIONAL TORQUE WRENCH, 1/2", 20-100 NM**

- Calibrated torque wrench with certificate and serial number
- Accuracy of  $\pm 4\%$
- For the controlled right tightening
- With reversible ratchet head
- Direct numerical display of the desired torque value
- Secure locking of the rotary handle by means of push-button
- Extra fine scale graduation
- Ergonomically designed 2-component handle
- Service-friendly as repair kits are available



03873L 89,90 EUR\*

**SW STAHL PROFESSIONAL TORQUE WRENCH, 1/2", 40-200 NM**

- Calibrated torque wrench with certificate and serial number
- Accuracy of  $\pm 4\%$
- For the controlled right tightening
- With reversible ratchet head
- Direct numerical display of the desired torque value
- Secure locking of the rotary handle by means of push-button
- Extra fine scale graduation
- Ergonomically designed 2-component handle
- Service-friendly as repair kits are available



03874L 89,90 EUR\*

**SW STAHL PROFESSIONAL TORQUE WRENCH, 3/4", 150-750 NM**

- Calibrated torque wrench with certificate and serial number
- Accuracy of  $\pm 4\%$
- For the controlled right tightening
- With reversible ratchet head
- Direct numerical display of the desired torque value
- Secure locking of the rotary handle by means of push-button
- Extra fine scale graduation
- Ergonomically designed 2-component handle
- Service-friendly as repair kits are available



03877L 499,90 EUR\*

**SW STAHL PROFESSIONAL TORQUE WRENCH, 1", 200-1,000 NM**

- Calibrated torque wrench with certificate and serial number
- Accuracy of  $\pm 4\%$
- For the controlled right tightening
- With reversible ratchet head
- Direct numerical display of the desired torque value
- Secure locking of the rotary handle by means of push-button
- Extra fine scale graduation
- Ergonomically designed 2-component handle
- Service-friendly as repair kits are available



03878L 599,90 EUR\*



**SW STAHL GARAGE TORQUE WRENCH, 1/2", 40-200 NM**

- Calibrated torque wrench with certificate and serial number
- Accuracy of  $\pm 4\%$
- For the controlled left and right tightening
- Ratchet head with push-through square (mushroom head)
- Clearly visible torque scale
- Extra fine graduation (+/- 1 Nm)
- Secure locking of the rotary handle
- Ergonomically designed 2-component handle
- Service-friendly as repair kits are available



03884L 69,90 EUR\*

**SW STAHL GARAGE TORQUE WRENCH, 1/2", 60-340 NM**

- Calibrated torque wrench with certificate and serial number
- Accuracy of  $\pm 4\%$
- For the controlled left and right tightening
- Ratchet head with push-through square (mushroom head)
- Clearly visible torque scale
- Extra fine graduation (+/- 1 Nm)
- Secure locking of the rotary handle
- Ergonomically designed 2-component handle
- Service-friendly as repair kits are available



03885L 99,90 EUR\*

**SW STAHL TORQUE WRENCH, 1/4", 2-10 NM**

- Calibrated torque wrench with certificate and serial number
- Left and right-handed
- With switchable ratchet head
- Double scale Ft-LB
- Extra-fine scale division
- Secure locking of the rotary handle
- Service-friendly as repair kits are available



03810L 106,00 EUR\*

**SW STAHL TORQUE WRENCH, 1/4", 5-25 NM**

- Calibrated torque wrench with certificate and serial number
- Left and right-handed
- With switchable ratchet head
- Double scale Ft-LB
- Extra-fine scale division
- Secure locking of the rotary handle
- Service-friendly as repair kits are available



03809L 106,00 EUR\*

**SW STAHL TORQUE WRENCH, 1/2", 40-200 NM**

- Calibrated torque wrench with certificate and serial number
- Left and right-handed
- With switchable ratchet head
- Double scale Ft-LB
- Extra-fine scale division
- Secure locking of the rotary handle
- Service-friendly as repair kits are available



03807L 106,00 EUR\*

**SW STAHL TORQUE WRENCH, 1/2", 60-340 NM**

- Calibrated torque wrench with certificate and serial number
- For clockwise and anti-clockwise tightening
- With changeable ratchet head
- Double scale Ft-LB
- Extra-fine dial division
- Secure interlocking of the turn grip
- Service friendly, since repair sets are available



03821L 106,00 EUR\*

**SW STAHL TORQUE WRENCH, 3/4", 110-550 NM**

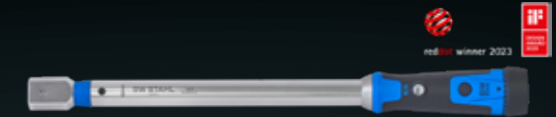
- Calibrated torque wrench with certificate and serial number
- For clockwise and anti-clockwise tightening
- With changeable ratchet head
- Double scale Ft-LB
- Extra-fine dial division
- Secure interlocking of the turn grip
- Service friendly, since repair sets are available



03822L 212,00 EUR\*

**SW STAHL PROFESSIONAL TORQUE WRENCH, WITH SQUARE INSERT, 40-200 NM**

- 14 x 18 mm plug-in connection for insert tools
- Head can be replaced in seconds
- Calibrated torque wrench with calibration certificate and serial number
- Accuracy of  $\pm 4\%$
- Direct numerical display of the desired torque value
- Secure locking of the rotary handle with a push button
- Extra fine scale graduation
- Ergonomically designed 2-component handle
- Service-friendly as repair kits are available
- Ergonomically designed handle
- Wide range of optionally available insert tools



03870L 139,90 EUR\*

**SW STAHL PROFESSIONAL TORQUE WRENCH WITH RING WRENCH INSERTS AND REVERSIBLE RATCHET INSERT, 40-200 NM, 9-PIECE**

- Calibrated torque wrench with calibration certificate and serial number
- 14 x 18 mm plug-in connection for plug-in tools
- Direct numerical display of the desired torque value

**Content:**

- Professional torque wrench with square insert, 14x18 mm, 40-200 Nm
- Reversible ratchet insert 12.5 mm (1/2")
- Ring wrench inserts with sizes 13, 15, 16, 17, 18, 19, 21 mm



03880L 279,90 EUR\*

**SW STAHL REVERSIBLE RATCHET INSERT, 1/2"**

- Accessories for torque wrench 03870L
- Square drive 14 x 18 mm



03831L 22,50 EUR\*



**SW STAHL OPEN-ENDED SPANNER INSERT**

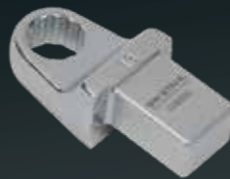
Zubehör zu Drehmomentschlüssel 03870L



03833L	Open-ended spanner insert, 13 mm	13,50 EUR*
03834L	Open-ended spanner insert, 14 mm	14,80 EUR*
03835L	Open-ended spanner insert, 15 mm	15,40 EUR*
03836L	Open-ended spanner insert, 16 mm	15,80 EUR*
03837L	Open-ended spanner insert, 17 mm	16,10 EUR*
03838L	Open-ended spanner insert, 18 mm	17,30 EUR*
03839L	Open-ended spanner insert, 19 mm	17,90 EUR*
03841L	Open-ended spanner insert, 21 mm	18,50 EUR*
03842L	Open-ended spanner insert, 22 mm	19,30 EUR*
03844L	Open-ended spanner insert, 24 mm	21,00 EUR*
03847L	Open-ended spanner insert, 27 mm	23,90 EUR*

**SW STAHL RING WRENCH INSERT**

Zubehör zu Drehmomentschlüssel 03870L

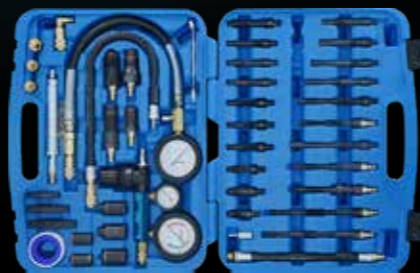


03853L	Ring wrench insert, 13 MM	13,50 EUR*
03854L	Ring wrench insert, 14 mm	14,80 EUR*
03855L	Ring wrench insert, 15 mm	15,40 EUR*
03857L	Ring wrench insert, 17 mm	16,10 EUR*
03858L	Ring wrench insert, 18 mm	17,30 EUR*
03859L	Ring wrench insert, 19 mm	17,90 EUR*
03861L	Ring wrench insert, 21 mm	18,50 EUR*
03862L	Ring wrench insert, 22 mm	19,30 EUR*
03864L	Ring wrench insert, 24 mm	21,00 EUR*

**SW STAHL COMPRESSION AND PRESSURE LOSS TESTER, 45-PIECE**

for professionally testing compression and pressure loss in most car and truck engines.

- Glow- and Sparkplug adaptors M8, M10, M12, M14 and M18
- Compression pressure tester, max. 50 bar
- Quick- action couplings (straight and angular versions)



26119L 432,50 EUR\*

**SW STAHL ULTRASONIC CLEANER, 15 L**

- Basin capacity: 15 L
- Tank size: 330 x 300 x 150 mm
- Basket size: 290 x 260 x 130 mm
- Temperature: 20-80 °C
- Time: 0-30 minutes

NEW PRODUCT



62120L 568,50 EUR\*

**SW STAHL LEAK DETECTOR - SMOKE GENERATOR**

This leak detector is the ideal tool for professionals who need a reliable and quick solution for leak testing. The leak detector is versatile and is suitable for inspecting

- Intake and boost pressure systems
- Crankcases
- Exhaust and exhaust gas recirculation systems
- Fuel systems
- AdBlue and additive systems
- Tyres
- Air conditioning systems
- EVAP fuel systems (especially for US vehicles)
- Bodywork and glazing (to locate wind noise and moisture ingress)



NEW PRODUCT



62110L 213,00 EUR\*

**SW STAHL COOLING SYSTEM FILLING UNIT**

with valves, connections and dial gauge.



21026L 69,50 EUR\*

**SW STAHL RADIATOR PRESSURE TESTING TOOL CASE, 0-2.5 BAR, HGV, 9-PIECE**

Complete with pump and seven radiator adapters for common trucks from DAF, IVECO, Mercedes-Benz, MAN, Scania, Renault and Volvo.

- Measuring range 0 - 2.5 bar
- Manometer for checking pressure loss
- Tool for testing locking caps
- Tool for pressure testing cooling system



21040L 213,00 EUR\*

**SW STAHL TURNING ANGLE GAUGE, 1/2", FLEXIBLE MAGNETIC FOOT**

- For use on 12.5 mm (1/2") actuating tools
- Maximum measuring precision, allows bolts to be tightened with the specified angle of turn, e.g. cylinder head bolts can be tightened in one operation
- Max. load capacity approx. 280 Nm
- All-metal design with a magnetic foot for fixing



03916L 17,90 EUR\*

**SW STAHL TORQUE REPRODUCER, 1", 3,200 NM, 5-PIECE**

to release jammed wheel nuts on lorries and vans. 25 mm (1"), input and output with extension, crank and inserts 32, 33 mm. Transferrable torque: 3,200 Nm Even completely jammed or rusted wheel nuts are loosened easily; the nut is then removed quickly or refitted using a crank and extension.



03966L 148,50 EUR\*



Validity of prices can be found here

Validity of prices can be found here



**SW STAHL OIL FILTER WRENCH SET, CV, 9-PIECE**

- Size 36 mm, 6-edge
- Size 66/67 mm, 14-edge
- Size 74 mm, 14-edge
- Size 106 mm, 15-edge
- Size 107 mm, 15-edge
- Size 108 mm, 15-edge
- Size 108 mm, 18 grooves
- Size 135 mm, 18-edge



08465L 94,50 EUR\*

**SW STAHL REVERSIBLE OIL FILTER WRENCH, 80-110 MM**

Suitable for universal use; can be used with socket spanner size 21 as well as with a 12.5 mm (1/2") ratchet. Optimum hold and interlock is given through stable self-clamping attachment and the toothed cheeks. Clockwise and anti-clockwise operation, thus suitable for loosening and tightening.



08412L 31,90 EUR\*

**SW STAHL BEARING AND BUSH REMOVAL/INSERTION SET, 32-PIECE**

For the removal and insertion of suspension bushes, ball bearings, wheel bearings, rubber bearings, etc. to passenger cars and commercial vehicles. Also to be used for radial sealing rings.

- Four spindles in 350 mm length, M10, M12, M14 and M16
- Eight pressure nuts with bearing: M10, M12, M14, M16
- 20 pressure pieces with various dimensions, slotted for visual inspection



10043L 201,50 EUR\*

**SW STAHL PRY BAR SET, 4-PIECE**

Pry bar for all applications in the truck and agricultural vehicles sector. With plastic soft grip, single-piece blade and impact cap. Ideal for supporting joints, bearing and separating work. High-strength version.

- 900 mm straight
- 900 mm 45° angled
- 600 mm 75° angled
- 600 mm 90° angled



10104L 112,50 EUR\*

**SW STAHL OIL FILTER PLIERS**

3-step adjustable oil filter pliers requiring very little space inside the engine compartment. This tool allows even hard-to-reach and very firmly installed oil filters to be loosened easily.

- Prevents slipping when replacing filter



08435L 20,50 EUR\*

**SW STAHL REFRACTOMETER**

For testing battery acid density, antifreeze content in coolant, windscreen washer fluid, and AdBlue® (AUS 32)



21550L 29,00 EUR\*

**SW STAHL WHEEL NUT WRENCH, 24 X 27 MM**

based on DIN 3119

- extremely stable design made from high-quality chrome vanadium
- with 22 mm turning pin (length 600 mm)
- matt chrome plated
- in practical fabric bag



02245L 36,50 EUR\*

**SW STAHL WHEEL NUT WRENCH, 27 X 32 MM**

based on DIN 3119

- Extremely stable design made from high-quality chrome vanadium
- With 22 mm turning pin (length 600 mm)
- Matt chrome plated
- In practical fabric bag



02247L 36,50 EUR\*

**SW STAHL SUPPORTING JOINT TOOL, VW**

for replacing the upper supporting joints in the VW T4.



302401L 225,00 EUR\*

**SW STAHL BALL-JOINT EXTRACTOR, MERCEDES-BENZ**

For pressing out the suspension joint from the steering knuckle for Mercedes-Benz Sprinter and VW LT.



302403L 339,50 EUR\*

**SW STAHL WHEEL NUT WRENCH, 30 X 32 MM**

based on DIN 3119

- Extremely stable design made from high-quality chrome vanadium
- With 22 mm turning pin (length 600 mm)
- Matt chrome plated
- In practical fabric bag



02251L 36,50 EUR\*

**SW STAHL WHEEL NUT WRENCH, 3/4", 24-27-32 MM, TRUCKS**

- With reinforced central plate
- Leg length 350 mm



02450L 37,50 EUR\*



**SW STAHL PNEUMATIC TYRE FILLER, 0-15 BAR**

- Made of high-grade diecast aluminum
- With flexible hose 300 mm
- Gauge 270° (0 - 15 bar)



25030L 14,10 EUR\*

**SW STAHL PNEUMATIC TYRE FILLER, 0-10 BAR**

- Calibrated version according to guideline 86/217/EWG
- Rubber-sheathed gauge
- With flexible 400 mm hose
- Measuring / filling range 0 - 10 bar



25032L 40,90 EUR\*

**SW STAHL PNEUMATIC TYRE FILLER, 0-10 BAR**

European make, calibrated version according to Directive 86/217/EEC.

- Measuring/filling range 0 - 10 bar
- Rubber-encased gauge
- Length of filling hose approx. 530 mm
- Scale diameter 56 mm (visible)



25034L 73,00 EUR\*

**SW STAHL SPARE HOSE FOR TYRE FILLER, 430 MM**

tyre air pistol, suitable for 25030L, 25032L, 25034L, 25100L



25036L 8,60 EUR\*

**SW STAHL TYRE VALVE STEM INSERTION TOOL, 300 MM**

For inserting new valves into the valve hole on the rim when fitting tubeless tires. The tool features a 2-component support piece for even better protection of aluminium and steel rims while working.

- Material: S45C, chrome-plated
- Length: 300 mm



02117L 11,40 EUR\*

**SW STAHL TYRE VALVE STEM FITTING TOOL, 330 MM**

For inserting new valves into the valve hole of rims on tubeless tyres. Suitable for all rims, with extra wide support to protect the rim edge from damage.



02115L 8,20 EUR\*

**SW STAHL TYRE VALVE STEM FITTING TOOL, 300 MM**

For inserting new valves into the valve hole of rims on tubeless tyres.



02116L 6,20 EUR\*

**SW STAHL TYRE LEVER, 650 MM**

- Specially shaped
- Heavy version for commercial vehicles, agricultural and construction machinery
- Chromium vanadium
- 650 mm long



02161L 27,00 EUR\*

**SW STAHL TYRE PROFILE DEPTH GAUGE, DIGITAL**

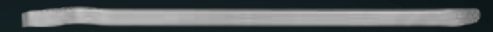
- Digital
- Measuring range from 0.00 to 28 mm
- Display can be switched from metric / inches
- Including battery LR44 digital



72315SB 8,20 EUR\*

**SW STAHL TYRE LEVER, 1,000 MM**

- Special shape
- Heavy-duty version for commercial vehicles agricultural and construction machinery
- Chromium vanadium
- Length 1,000 mm



02163L 41,90 EUR\*

**SW STAHL FITTING PASTE**

for the fast, gentle and easy fitting and removal of all standard wheel/tyre combinations including run-flat tyres and PAX tyres.

- Chemically neutral to rubber and metal
- The high sliding effect during fitting and removal reduces fitting injuries
- Promotes the interlocking between rim and tyre
- 100% biologically degradable
- 100% guarantee of no contact allergies for fitters
- Antifreeze-safe, processing temperature from -15°C to +50°C
- Very efficient
- Centrifuge-resistant
- Color white



02130L	Fitting paste, 3 kg	9,30 EUR*
02132L	Fitting paste, 5 kg	12,50 EUR*

**SW STAHL BRUSH**

With round head for better application of assembly paste.



02135L 12,50 EUR\*

**SW STAHL PRESSURE SPRAYER 360°, 1L**

- Suitable for acetone-free brake cleaner, fuel and commercial cleaning agents
- Including adjustable spray nozzle



07384L 15,60 EUR\*



**SW STAHL BOLT CLEANING SET, 1/4", LORRY, 4-PIECE**

For quick and easy cleaning of screws, studs or wheel bolts. The set includes the following brush attachments (1 each):

- Brush attachment 20 mm, 37 mm deep
- Brush attachment 22 mm, 60 mm deep
- Brush attachment 24 mm, 37 mm deep
- Brush attachment 30 mm, 60 mm deep



10354L 52,00 EUR\*

**SW STAHL BRAKE DISC GAUGE, 60 MM**

Specifically for measuring brake disc thickness.

- Measuring range: 0 - 60 mm
- Vernier scale: 0.1 mm
- Length of outer measuring arms: 50 mm
- Inox, hardened



72345L 37,90 EUR\*

**SW STAHL FLEXIBLE MAGNETIC BASE HOLDER**

flexible, for gauge or other measuring instruments.

- Thanks to the prism base which can be switched on and off, the bracket holds perfectly to struts, which are not made of alloy material
- For versatile adjustment including precision setting
- Ideal for testing the brake discs and wheel hubs for axial run-out



07354L 18,90 EUR\*

**SW STAHL SPECIAL BRAKE CALLIPER BRUSH SET, 2-PIECE**

- With hook hole and ergonomically shaped handles
- Steel and brass



09320SB 11,80 EUR\*

**SW STAHL SPECIAL BRAKE CALLIPER FILE, 260 MM**

- Extremely narrow
- Milled on 4 sides
- Extremely long tool life
- Suitable for brake dust that has become firmly burnt onto brake callipers



94830L 24,50 EUR\*

**SW STAHL OVERVOLTAGE PROTECTION, 12 V**

prevents dangerous overvoltage during welding work.

- Maximum load 200 A
- Copper cable and steel clamps with rubber protection
- Length of the cable: 195 mm
- For 12 V systems



32250L 85,90 EUR\*

**SW STAHL PROFESSIONAL BLIND RIVET PLIERS, 250 MM**

profi version, for aluminium rivets, with replaceable nosepieces.

- 2,4 - 3,0 - 4,0 - 4,8 mm



42710L 9,40 EUR\*

**SW STAHL BLIND RIVET PLIERS, ROTATING HEAD, 250 MM**

With 360° rotatable head, for aluminium rivets, with 4 interchangeable rivet heads.

- 2,4 - 3,0 - 4,0 - 4,8 mm



42750L 15,10 EUR\*

**SW STAHL BLIND RIVET PLIERS, 250 MM**

- For aluminium work
- With replaceable nosepieces
- 2,4 - 3,0 - 4,0 - 4,8 mm



42700SB 12,00 EUR\*

**SW STAHL RIVET PLIER, 500 MM**

for aluminium and steel rivets and rivet nuts, with many accessories, an absolute must for working on riveted window lifters.



42760L 106,50 EUR\*

**SW STAHL PNEUMATIC BODYWORK JIGSAW, 235 MM**

for use with jigsaw blades for sawing various materials such as metal, plastic, rubber and wood.

- Stroke frequency: 9,000 rev./min
- Construction length: 235 mm
- Weight: 770 g
- Max. cutting output: 1.2 mm



40008L 106,50 EUR\*

**SW STAHL INSULATED TOOL SET, 50-PIECE**

All components of the tool set are certified according to the standard DIN EN 60900 VDE 0682-201:2013-04 and thus insulated up to 1,000 V AC or 1,500 V DC.

Contents:

- Insulated screwdrivers: PH1, PH2, PH3, T20, T25, T30, 2,5 - 3 - 3,5 - 4 mm
- Insulated 10 mm (3/8") socket spanner bits: 6 - 7 - 8 - 10 - 11 - 12 - 13 - 14 - 15 - 16 - 17 - 18 - 19 - 20 - 21 - 22 mm
- Insulated 10 mm (3/8") screwdriver bits: M8, M10, M12
- Insulated 10 mm (3/8") extensions: 150 and 250 mm
- Stripping knife
- Insulated water pump pliers, 250 mm
- Insulated telephone pliers, straight, 200 mm
- Insulated telephone pliers, bent, 200 mm
- Insulated cable cutter, 200 mm
- Insulated combination pliers, 180 mm
- Insulated side cutter, 160 mm
- 10 insulating capes
- Insulated ratchet, 10 mm (3/8")



V1000 530,50 EUR\*



**SW STAHL DIGITAL MULTIMETER, 500 V, CAT II**

Compact and handy, high-contrast, one-line LCD display, 19-position rotary switch. The automatic overflow and polarity display provides a reliable warning which helps avoid faults. A temperature sensor allows to measure temperatures between -20°C and +120°C.



32230L 20,50 EUR\*

**SW STAHL DIGITAL MULTIMETER, 600 V, CAT II**

acoustic transition tester, transistor test, capacity and frequency measurement, data retaining function, automatic range selection.



32235L 67,50 EUR\*

**SW STAHL MULTI-TESTER, FOR VEHICLES, 6-24 V**

For cars and HGVs, for testing car and HGV power systems at 6 - 24 V, suitable e.g. for:

- Checking the thermo switch
- Checking the wiper motor or the petrol pump once installed
- Checking trailer couplings
- Use as a diode tester



32255L 76,50 EUR\*

**SW STAHL MEASURING CABLE SET, 92-PIECE**

The measuring cable set is designed to extend conventional test and measurement devices (e.g., multimeters or oscilloscopes) and enable their use as powerful tools for electrical fault diagnosis in modern motor vehicles. It supports the analysis and testing of sensors, actuators, and complex electronic circuits increasingly integrated into control units and vehicle subsystems. The kit's included plug adapters, test leads, alligator clips, and additional components allow low-resistance, contact-safe signal acquisition directly at the original connectors of the vehicle wiring - without damaging the insulation or altering the contacts. Typical application areas include, among others:

- Signal tracing in engine management systems
- Voltage and current measurements in lighting and comfort systems
- Diagnosis of control and regulation circuits such as central locking, power windows, etc.



32225L 272,50 EUR\*

**SW STAHL ENDSCOPE, WITH SWIVELLING PROBE, 3.9 MM**

**Technical Specifications:**

- Camera lens Ø 3.9mm
- Probe length 1.5m
- Probe bending angle 210°
- Camera field of view 80°
- Light source: 6 LEDs in the probe
- Screen size: 4.3"
- Battery type: 2600mAh Li-ion battery
- Operating temperature: -10°C to +70°C

**NEW PRODUCT**



32285L 411,90 EUR\*

**SW STAHL POLARITY TESTER, 3-48 V**

with LED display for + / - and puncturing function for isolated lines, 3 - 48 volts, to prevent damage caused by incorrectly polarized lines.



31705SB 7,10 EUR\*

**SW STAHL TESTING LAMP, 6-24V**

- Soffitten test lamp, 6 - 24V
- Brass, nickel-plated



32200L 4,00 EUR\*

**SW STAHL BATTERY TESTER WITH PRINTER, 12V / 24V**

The tester checks systems at 12 and 24 volts, the battery's state of charge, the battery load when starting the engine, performs an extended load test and checks that the generator is charged. The following battery types can be checked:

- Lead-acid battery (wet cell)
- VRLA battery (Valve-Regulated Lead-Acid Battery)
- GEL/SLA battery (Sealed Lead Acid Battery)
- EFB battery (Enhanced Flooded Battery)
- AGM battery (Absorbent Glass Mat Battery)



32275L 296,00 EUR\*

**SW STAHL BATTERY BRUSH**

for brushing off corrosion and dirt on battery poles and pole terminals.



34005L 4,70 EUR\*

**SW STAHL BATTERY POLE TERMINAL CLEANING MILLING CROSS**

with a conical cutter and scraper to remove positive and negative pole corrosion.



34015SB 11,00 EUR\*

**SW STAHL BATTERY ACID TESTER**

For testing the acid density in car/commercial vehicle batteries

- Only a small suction volume required

- Centric guidance of the hydrometer; this prevents oscillation and lateral contact
- Numerical and colour scale for immediate recognition of the state of charge



21510L 5,80 EUR\*



**SW STAHL BATTERY SERVICE KEY**

- For inserting and removing the sealing plugs on car/commercial vehicle batteries
- Prevents damage to the sealing plugs



34000L 8,20 EUR\*

**SW STAHL STRIPPING PLIERS, AUTOMATIC**

- self-adjusting 0.2 - 6 mm<sup>2</sup>, with wire cutter.
- Ideal for doubly insulated cables
  - Separates insulation in the middle of a cable too, to solder branches
  - For pressing insulated or non-insulated cable lugs and ignition plugs



42410SB 16,10 EUR\*

**SW STAHL CABLE LUG GRIPPER, REPLACEABLE PRESS JAWS, 6-PIECE**

with replaceable press jaws, forced lock, 2-K insulated handle, in plastic box

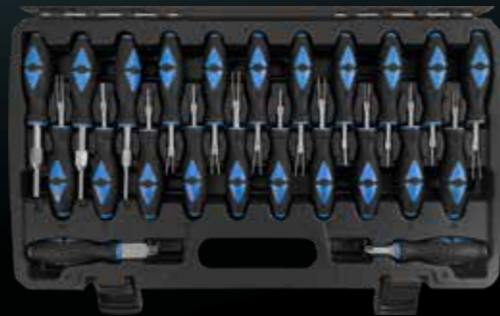
- Insulated cable lugs from 0.5 - 6.0 mm<sup>2</sup> (red, blue, yellow)
- Closed, non-insulated cable lugs from 0.5 - 10.0 mm
- Non-insulated cable lugs from 0.5 - 6.0 mm, up to 6.3 mm width
- Cable end sleeves with and without collar from 0.5 - 4.0 mm
- Cable end sleeves over 4.0 mm



42585L 76,90 EUR\*

**SW STAHL SYSTEM CABLE UNLOCKING SET, 23-PIECE**

- Suitable for round and tab contacts
- Indispensable for mechatronics technicians and vehicle electricians



32160L 133,90 EUR\*

**AWARD WINNING TROLLEYS**



**SW STAHL PROFESSIONAL TOOL TROLLEY TT801, BLACK, EQUIPPED, 213-PIECE, 3 INLAYS**

Modern tool trolley for professional use in all automotive and industrial businesses.. The TWIN-Lock locking system makes it possible to choose whether only one or all drawers can be opened at the same time. 3 Drawers equipped with 213 Tools in premium quality, stored in 3/3 system foam inserts.

- 8 drawers with heavy-duty slides
- Quick-locking mechanism with soft close function on each drawer
- Stainless steel top cover with embossed grooves and side sealing
- Wheels with TPE treads ensure smooth running
- TWIN-Lock locking system
- For further details on the tool trolley, see article 07101L

Contains the following equipped 3/3 system foam inserts:

- Z3011-6 / Tool assortment, Screwdrivers and pliers, 25-piece
- Z3011-14 / Tool assortment, 1/4", 3/8", 1/2", with ratchets, 144-piece
- Z3011-15 / Tool assortment, Combination spanners and general hand tools, 44-piece

TT801  
BLACK

Z3117



Z3117 1739,90 EUR\*

**SW STAHL PROFESSIONAL TOOL TROLLEY TT801, BLUE, EQUIPPED, 213-PIECE, 3 INLAYS**

Modern tool trolley for professional use in all automotive and industrial businesses.. The TWIN-Lock locking system makes it possible to choose whether only one or all drawers can be opened at the same time. 3 Drawers equipped with 213 Tools in premium quality, stored in 3/3 system foam inserts.

- 8 drawers with heavy-duty slides
- Quick-locking mechanism with soft close function on each drawer
- Stainless steel top cover with embossed grooves and side sealing
- Wheels with TPE treads ensure smooth running
- TWIN-Lock locking system
- For further details on the tool trolley, see article 07100L

Contains the following equipped 3/3 system foam inserts:

- Z3011-6 / Tool assortment, Screwdrivers and pliers, 25-piece
- Z3011-14 / Tool assortment, 1/4", 3/8", 1/2", with ratchets, 144-piece
- Z3011-15 / Tool assortment, Combination spanners and general hand tools, 44-piece

TT801  
BLUE

Z3116



Z3116 1639,90EUR\*



**SW STAHL PROFESSIONAL TOOL TROLLEY TT801, BLUE, EQUIPPED, 246-PIECE, 4 INLAYS**

Modern tool trolley for professional use in all automotive and industrial businesses. The TWIN-Lock locking system makes it possible to choose whether only one or all drawers can be opened at the same time. 4 Drawers equipped with 246 Tools in premium quality, stored in 3/3 system foam inserts.

- 8 drawers with heavy-duty slides
- Quick-locking mechanism with soft close function on each drawer
- Stainless steel top cover with embossed grooves and side sealing
- Wheels with TPE treads ensure smooth running
- TWIN-Lock locking system
- For further details on the tool trolley, see article 07100L

Contains the following equipped 3/3 system foam inserts:

- Z3011-4 / Tool assortment, Combination and ratchet spanners, 49-piece
- Z3011-6 / Tool assortment, Screwdrivers and pliers, 25-piece
- Z3011-9 / Tool assortment, general hand tools, 28-piece
- Z3011-14 / Tool assortment, 1/4", 3/8", 1/2", with ratchets, 144-piece

**SW STAHL PROFESSIONAL TOOL TROLLEY TT801, BLACK, EQUIPPED, 246-PIECE, 4 INLAYS**

Modern tool trolley for professional use in all automotive and industrial businesses. The TWIN-Lock locking system makes it possible to choose whether only one or all drawers can be opened at the same time. 4 Drawers equipped with 246 Tools in premium quality, stored in 3/3 system foam inserts.

- 8 drawers with heavy-duty slides
- Quick-locking mechanism with soft close function on each drawer
- Stainless steel top cover with embossed grooves and side sealing
- Wheels with TPE treads ensure smooth running
- TWIN-Lock locking system
- For further details on the tool trolley, see article 07101L

Contains the following equipped 3/3 system foam inserts:

- Z3011-4 / Tool assortment, Combination and ratchet spanners, 49-piece
- Z3011-6 / Tool assortment, Screwdrivers and pliers, 25-piece
- Z3011-9 / Tool assortment, general hand tools, 28-piece
- Z3011-14 / Tool assortment, 1/4", 3/8", 1/2", with ratchets, 144-piece

**SW STAHL PROFESSIONAL TOOL TROLLEY TT801, BLUE, EQUIPPED, 341-PIECE, 5 INLAYS**

Modern tool trolley for professional use in all automotive and industrial businesses. The TWIN-Lock locking system makes it possible to choose whether only one or all drawers can be opened at the same time. 5 Drawers equipped with 341 Tools in premium quality, stored in 3/3 system foam inserts.

- 8 drawers with heavy-duty slides
- Quick-locking mechanism with soft close function on each drawer
- Stainless steel top cover with embossed grooves and side sealing
- Wheels with TPE treads ensure smooth running
- TWIN-Lock locking system
- For further details on the tool trolley, see article 07100L

Contains the following equipped 3/3 system foam inserts:

- Z3011-1 / Tool assortment, 1/4", 3/8", 1/2", with ratchets, 167-piece
- Z3011-4 / Tool assortment, Combination and ratchet spanners, 49-piece
- Z3011-6 / Tool assortment, Screwdrivers and pliers, 25-piece
- Z3011-9 / Tool assortment, general hand tools, 28-piece
- Z3011-11 / Tool assortment, Bit-sockets 1/2", 72-piece

**SW STAHL PROFESSIONAL TOOL TROLLEY TT801, BLACK, EQUIPPED, 341-PIECE, 5 INLAYS**

Modern tool trolley for professional use in all automotive and industrial businesses. The TWIN-Lock locking system makes it possible to choose whether only one or all drawers can be opened at the same time. 5 Drawers equipped with 341 Tools in premium quality, stored in 3/3 system foam inserts.

- 8 drawers with heavy-duty slides
- Quick-locking mechanism with soft close function on each drawer
- Stainless steel top cover with embossed grooves and side sealing
- Wheels with TPE treads ensure smooth running
- TWIN-Lock locking system
- For further details on the tool trolley, see article 07101L

Contains the following equipped 3/3 system foam inserts:

- Z3011-1 / Tool assortment, 1/4", 3/8", 1/2", with ratchets, 167-piece
- Z3011-4 / Tool assortment, Combination and ratchet spanners, 49-piece
- Z3011-6 / Tool assortment, Screwdrivers and pliers, 25-piece
- Z3011-9 / Tool assortment, general hand tools, 28-piece
- Z3011-11 / Tool assortment, Bit-sockets 1/2", 72-piece



Z3113 1869,90 EUR\*



Z3114 1969,90 EUR\*



Z3110 2419,90 EUR\*



Z3111 2519,90 EUR\*



**SW STAHL PROFESSIONAL TOOL TROLLEY TT802, BLUE, EQUIPPED, 304-PIECE, 3 INLAYS**

Extra wide and modern tool trolley for professional use in all automotive and industrial businesses. The TWIN-Lock locking system makes it possible to choose whether only one or all drawers can be opened at the same time. 3 Drawers equipped with 304 Tools in premium quality, stored in 4/3 system foam inserts.

- 8 drawers with heavy-duty slides
- Quick-locking mechanism with soft close function on each drawer
- Stainless steel top cover with embossed grooves and side sealing
- Wheels with TPE treads ensure smooth running
- TWIN-Lock locking system
- For further details on the tool trolley, see article 07110L

Contains the following equipped 4/3 system foam inserts:

- Z3011-3 / Tool assortment, 1/4", 3/8", 1/2", with ratchets, 203-piece
- Z3011-5 / Tool assortment, Combination and ratchet spanners, 57-piece
- Z3011-8 / Tool assortment, Screwdrivers and pliers, 44-piece

**SW STAHL PROFESSIONAL TOOL TROLLEY TT802, BLACK, EQUIPPED, 304-PIECE, 3 INLAYS**

Extra wide and modern tool trolley for professional use in all automotive and industrial businesses. The TWIN-Lock locking system makes it possible to choose whether only one or all drawers can be opened at the same time. 3 Drawers equipped with 304 Tools in premium quality, stored in 4/3 system foam inserts.

- 8 drawers with heavy-duty slides
- Quick-locking mechanism with soft close function on each drawer
- Stainless steel top cover with embossed grooves and side sealing
- Wheels with TPE treads ensure smooth running
- TWIN-Lock locking system
- For further details on the tool trolley, see article 07111L

Contains the following equipped 4/3 system foam inserts:

- Z3011-3 / Tool assortment, 1/4", 3/8", 1/2", with ratchets, 203-piece
- Z3011-5 / Tool assortment, Combination and ratchet spanners, 57-piece
- Z3011-8 / Tool assortment, Screwdrivers and pliers, 44-piece

**SW STAHL PROFESSIONAL TOOL TROLLEY TT802, BLUE, EQUIPPED, 338-PIECE, 4 INLAYS**

Extra wide and modern tool trolley for professional use in all automotive and industrial businesses. The TWIN-Lock locking system makes it possible to choose whether only one or all drawers can be opened at the same time. 4 Drawers equipped with 338 Tools in premium quality, stored in 4/3 system foam inserts.

- 8 drawers with heavy-duty slides
- Quick-locking mechanism with soft close function on each drawer
- Stainless steel top cover with embossed grooves and side sealing
- Wheels with TPE treads ensure smooth running
- TWIN-Lock locking system
- For further details on the tool trolley, see article 07110L

Contains the following equipped 4/3 system foam inserts:

- Z3011-3 / Tool assortment, 1/4", 3/8", 1/2", with ratchets, 203-piece
- Z3011-5 / Tool assortment, Combination and ratchet spanners, 57-piece
- Z3011-8 / Tool assortment, Screwdrivers and pliers, 44-piece
- Z3011-10 / Tool assortment, general hand tools, 34-piece

**SW STAHL PROFESSIONAL TOOL TROLLEY TT802, BLACK, EQUIPPED, 338-PIECE, 4 INLAYS**

Extra wide and modern tool trolley for professional use in all automotive and industrial businesses. The TWIN-Lock locking system makes it possible to choose whether only one or all drawers can be opened at the same time. 4 Drawers equipped with 338 Tools in premium quality, stored in 4/3 system foam inserts.

- 8 drawers with heavy-duty slides
- Quick-locking mechanism with soft close function on each drawer
- Stainless steel top cover with embossed grooves and side sealing
- Wheels with TPE treads ensure smooth running
- TWIN-Lock locking system
- For further details on the tool trolley, see article 07111L

Contains the following equipped 4/3 system foam inserts:

- Z3011-3 / Tool assortment, 1/4", 3/8", 1/2", with ratchets, 203-piece
- Z3011-5 / Tool assortment, Combination and ratchet spanners, 57-piece
- Z3011-8 / Tool assortment, Screwdrivers and pliers, 44-piece
- Z3011-10 / Tool assortment, general hand tools, 34-piece



Z3208 2129,90 EUR\*

Z3209 2229,90 EUR\*

Z3211 2449,90 EUR\*

Z3212 2549,90 EUR\*



**SW STAHL PROFESSIONAL TOOL TROLLEY TT802, BLUE, EQUIPPED, 434-PIECE, 5 INLAYS**

Extra wide and modern tool trolley for professional use in all automotive and industrial businesses. The TWIN-Lock locking system makes it possible to choose whether only one or all drawers can be opened at the same time. 5 Drawers equipped with 434 Tools in premium quality, stored in 4/3 system foam inserts.

- 8 drawers with heavy-duty slides
- Quick-locking mechanism with soft close function on each drawer
- Stainless steel top cover with embossed grooves and side sealing
- Wheels with TPE treads ensure smooth running
- TWIN-Lock locking system
- For further details on the tool trolley, see article 07110L

Contains the following equipped 4/3 system foam inserts:

- Z3011-5 / Tool assortment, Combination and ratchet spanners, 57-piece
- Z3011-8 / Tool assortment, Screwdrivers and pliers, 44-piece
- Z3011-10 / Tool assortment, general hand tools, 34-piece
- Z3011-12 / Tool assortment, 1/2", with ratchet, 95-piece
- Z3011-13 / Tool assortment, 1/4", 3/8", with ratchets, 204-piece

**SW STAHL PROFESSIONAL TOOL TROLLEY TT802, BLACK, EQUIPPED, 434-PIECE, 5 INLAYS**

Extra wide and modern tool trolley for professional use in all automotive and industrial businesses. The TWIN-Lock locking system makes it possible to choose whether only one or all drawers can be opened at the same time. 5 Drawers equipped with 434 Tools in premium quality, stored in 4/3 system foam inserts.

- 8 drawers with heavy-duty slides
- Quick-locking mechanism with soft close function on each drawer
- Stainless steel top cover with embossed grooves and side sealing
- Wheels with TPE treads ensure smooth running
- TWIN-Lock locking system
- For further details on the tool trolley, see article 07111L

Contains the following equipped 4/3 system foam inserts:

- Z3011-5 / Tool assortment, Combination and ratchet spanners, 57-piece
- Z3011-8 / Tool assortment, Screwdrivers and pliers, 44-piece
- Z3011-10 / Tool assortment, general hand tools, 34-piece
- Z3011-12 / Tool assortment, 1/2", with ratchet, 95-piece
- Z3011-13 / Tool assortment, 1/4", 3/8", with ratchets, 204-piece

**TT802 BLUE**  
**Z3200**



Z3200 3079,90 EUR\*

**TT802 BLACK**  
**Z3201**



Z3201 3179,90 EUR\*

THE TROLLEY WITH  
**TT802 WITH COMMERCIAL VEHICLE INSERTS**

**SW STAHL PROFESSIONAL TOOL TROLLEY TT802, BLACK, COMMERCIAL VEHICLE ASSEMBLY, 472-PIECE, 7 INLAYS**

Extra wide and modern tool trolley for professional use in all automotive and industrial businesses. The TWIN-Lock locking system makes it possible to choose whether only one or all drawers can be opened at the same time. 7 drawers equipped with 472 tools in premium quality, stored in 4/3 system foam inserts.

- 8 drawers with heavy-duty slides
- Quick-locking mechanism with soft close function on each drawer
- Stainless steel top cover with embossed grooves and side sealing
- Wheels with TPE treads ensure smooth running
- TWIN-Lock locking system
- For further details on the tool trolley, see article 07111L

Contains the following equipped 4/3 system foam inserts and tools:

- Z3011-5 / combination and ratchet spanners, 57-piece
- Z3011-8 / screwdrivers and pliers, 44-piece
- Z3011-12 / sockets 1/2", with ratchet handle, 95-piece
- Z3011-13 / sockets 1/4", 3/8", with ratchet handle, 204-piece
- Z3011-16 / Handtools, 26-piece
- Z3011-17 / sockets with ratchet handle, 3/4", 40-piece
- Z3011-18 / combination spanner, extra long, 6-piece

Z3206 3999,90 EUR\*

**TT802 BLACK**  
**Z3206**



reddot winner 2023



**SW STAHL WORKSHOP TROLLEY TT401, BLACK, EQUIPPED, 207-PIECE**

Workshop trolley with 7 drawers, description see article 07140L „Worker-Set“ - 3 drawers equipped with a total of 207 tools in premium quality, stored in foam modules. Contains the following modules:

- Z3010-1 - sockets, 171-piece
- Z3010-2 - spanners, 24 pieces
- Z3010-7 - pliers and screwdrivers, 12-piece



TT401

Z4003 649,90 EUR\*

**SW STAHL WORKSHOP TROLLEY TT401, BLACK, EQUIPPED, 347-PIECE**

Workshop trolley with 7 drawers, description see article 07140L „Worker-Set“ - 5 drawers equipped with a total of 347 tools in premium-quality, stored in foam modules. Contains the following modules:

- Z3010-1 - sockets, 171-piece
- Z3010-2 - spanners, 24 pieces
- Z3010-7 - pliers and screwdrivers, 12-piece
- Z3010-4 - assorted bit set, 102-piece
- Z3010-5 - general workshop set, 38-piece



TT401

Z4005 799,90 EUR\*

**SW STAHL WORKSHOP MOBILE TOOL CHEST, EQUIPPED, 207-PIECE**

Tool chest with 7 drawers

„Worker-Set“ - 3 drawers equipped with a total of 207 tools in premium-quality, stored in foam modules.



TT200

Z3703 549,90 EUR\*

**SW STAHL WORKSHOP MOBILE TOOL CHEST, EQUIPPED, 347-PIECE**

Tool chest with 7 drawers

„Worker-Set“ - 5 drawers equipped with a total of 347 tools in premium-quality, stored in foam modules.



TT200

Z3705 699,90 EUR\*

# THE TROLLEY WITH TT402 WITH COMMERCIAL VEHICLE INSERTS

**SW STAHL TOOL TROLLEY TT402, BLACK, EQUIPPED, 472-PIECE, 7 INLAYS**

Extra wide and modern tool trolley with 7 drawers for professional use in all automotive and industrial businesses. 5 Drawers equipped with 472 Tools in premium quality, stored in 4/3 system foam inserts.

- drawers full extension, ball bearing
- quick lock on each drawer
- central lockable
- multiple extraction possible
- plastic edge protection
- 2 swivel castors

Drawer interior dimension

- Width: 760 mm
- Depth: 400 mm
- Height 1. - 5. drawer: 70 mm
- Height 6. - 7. drawer: 145 mm

Contains the following equipped 4/3 system foam inserts:

- Z3011-5 / Tool assortment, combination and ratchet spanners, 57-piece
- Z3011-8 / Tool assortment, screwdrivers and pliers, 44-piece
- Z3011-12 / Tool assortment, sockets 1/2", with ratchet handle, 95-piece
- Z3011-13 / Tool assortment, sockets 1/4", 3/8", with ratchet handle, 204-piece
- Z3011-16 / Tool assortment, Handtools, 26-piece
- Z3011-17 / Tool assortment, sockets with ratchet handle, 3/4", 40-piece
- Z3011-18 / Tool assortment, combination spanner, extra long, 6-piece

TT402  
Z4206

NEW  
PRODUCT



Z4206 2.499,90 EUR\*

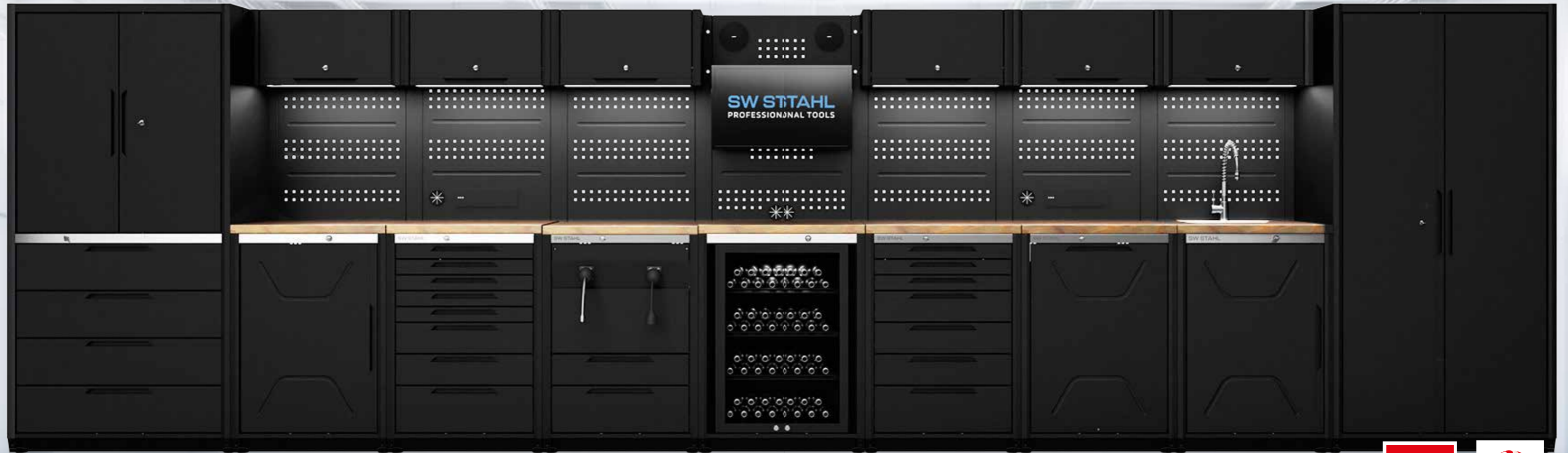


SW STAHL TB8000 COMPILATION "PROFI" 6.80 M

Cabinet wall compilation 6.80 m consisting of:

- Highboard with 2 doors
- Highboard with 4 drawer and 2 doors
- Base cabinet with 1 door
- Base cabinet 8 drawer
- Base cabinet with reels for electricity and compressed air
- Base cabinet with fridge
- Base cabinet 7 drawer
- Base cabinet trash can
- Base cabinet with stainless steel sink
- 6x Wall cupboard
- Multimedia 3/3 pegboard with accessories (without TV)
- Bluetooth speaker
- Pegboards
- 2x Pegboard with power socket
- LED panel
- Worktops wood

TB 8000



080010 13,918.20 EUR\*



Validity of prices can be found here



Validity of prices can be found here

SW STAHL TB8000 COMPILATION "STARTER", WORKTOP STAINLESS STEEL, 3.10 M

TB 8000

Cabinet wall compilation 3.10 m consisting of:

- Base cabinet trash can
- Base cabinet 8 drawer
- Base cabinet 2 doors
- Highboard with 2 doors
- 3x Wall cupboard
- Pegboards
- Pegboard with power socket
- LED panel
- Worktops stainless steel



080006 6,060.40 EUR\*

SW STAHL TB8000 COMPILATION "MECHANIC" 4.70 M

TB 8000

Cabinet wall compilation 4.70 m consisting of:

- Base cabinet 7 drawer
- Base cabinet 8 drawer
- Base cabinet trash can
- Base cabinet with reels for electricity and compressed air
- 2x Highboard with 2 doors
- 2x Wall cupboard
- Pegboards
- Pegboard with power socket
- LED panel
- Work tops wood



080008 8,713.70 EUR\*

SW STAHL TB8000 COMPILATION "STARTER", WORKTOP WOOD, 3.10 M

TB 8000

Cabinet wall compilation 3.10 m consisting of:

- Base cabinet trash can
- Base cabinet 8 drawer
- Base cabinet 2 doors
- Highboard with 2 doors
- 3x Wall cupboard
- Pegboards
- Pegboard with power socket
- LED panel
- Worktops wood



080007 5,790.40 EUR\*

SW STAHL TB8000 COMPILATION "SHOW ROOM" 5.40 M

TB 8000

Cabinet wall compilation 5.40 m consisting of:

- Highboard with 2 doors
- Highboard with 4 drawer and 2 doors
- Base cabinet 2 doors
- Base cabinet 8 drawer
- Base cabinet with holder for beer dispenser
- Beer dispenser
- Base cabinet with fridge
- Base cabinet with stainless steel sink
- 4x Wall cupboard
- Multimedia 3/3 pegboard with accessories (without TV)
- Bluetooth speaker
- Pegboards
- Pegboard with power socket
- LED panel
- Worktops wood



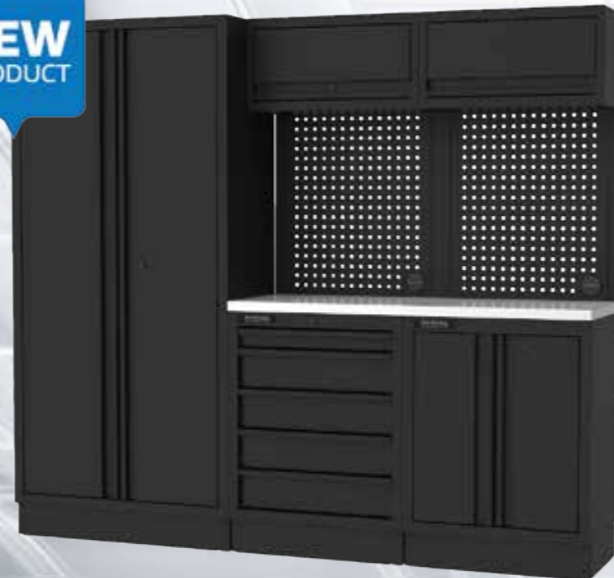
080009 10,532.60 EUR\*



SW STAHL TB4000 COMPILATION "STARTER" 2.28 M

TB 4000

NEW  
PRODUCT



**Cabinet wall compilation 2.28 m consisting of:**  
**Highboard with 2 doors and 4 shelves**

- Powder-coated
- Aluminium handle strip
- 4 height-adjustable shelves
- Shelves loadable up to 45 kg
- Height-adjustable feet

**Base unit with 5 drawers**

- 1 drawer, 56 mm high, load capacity up to 45 kg
- 4 drawers, 131 mm high, load capacity up to 45 kg
- Internal drawer dimensions 56/131 x 565 x 382 mm
- Powder-coated
- Aluminium handles
- Height-adjustable feet
- Soft-Close-Mechanism

**Base cabinet with 2 doors and 1 shelf**

- Powder-coated
- Aluminium handle strip
- 1 height-adjustable shelf
- Shelf loadable up to 45 kg
- Height-adjustable feet

**Wall cupboards**

- Powder-coated
- Aluminium handle strip
- Flap with gas pressure spring
- Soft-Opening-Mechanism
- Loadable up to 40 kg

**Pegboards**

- Powder-coated
- Perforation in 38 mm grid

**Worktop stainless steel**

- Robust, 38 mm thick worktop made of impact-resistant stainless steel

040001 1,750.90 EUR\*

SW STAHL TB2000 COMPILATION "STARTER" 2.04 M

TB 2000

NEW  
PRODUCT



**Cabinet wall compilation 2.04 m consisting of:**  
**Highboard with door and 4 shelves**

- Powder-coated
- Aluminium handle strip
- 4 height-adjustable shelves
- Shelves loadable up to 45 kg
- Height-adjustable feet

**Base cabinet with 6 drawers**

- 3 drawers, 53 mm high, load capacity up to 45 kg
- 3 drawers, 128 mm high, load capacity up to 45 kg
- Internal drawer dimensions 53/128 x 563 x 383 mm
- Powder-coated
- Aluminium handles
- Height-adjustable feet
- Soft-Close-Mechanism

**Base cabinet with 2 doors and 1 shelf**

- Powder-coated
- Aluminium handle strip
- 1 height-adjustable shelf
- Shelf loadable up to 45 kg
- Height-adjustable feet

**Wall cupboards**

- Powder-coated
- Aluminium handle strip
- Flap with gas pressure spring
- Soft-Opening-Mechanism
- Loadable up to 40 kg

**Pegboards**

- Powder-coated
- Perforation in 38 mm grid

**Worktop wood**

- Robust, 25 mm thick worktop made of impact-resistant rubber wood
- Surface sealed against moisture

020001 1,499.90 EUR\*

SW STAHL TB4000 COMPILATION "MECHANIC" 2.64 M

TB 4000

NEW  
PRODUCT



**Cabinet wall compilation 2.64 m consisting of:**  
**Highboard with door and 4 shelves**

- Powder-coated
- Aluminium handle strip
- 4 height-adjustable shelves
- Shelves loadable up to 45 kg
- Height-adjustable feet

**Tool trolley, black, empty**

- 5 drawers with soft-close mechanism
- 2 drawers, 56 mm high, load capacity up to 45 kg
- 3 drawers, 131 mm high, load capacity up to 45 kg
- Internal drawer dimensions 565 x 382 mm
- Centrally lockable
- Multiple pull-out possible
- Plastic edge protection
- 2 swivel castors

**Base cabinet with 5 drawers**

- drawer, 56 mm high, load capacity up to 45 kg
- 4 drawers, 131 mm high, load capacity up to 45 kg
- Internal drawer dimensions 56/131 x 531 x 382 mm
- Powder-coated
- Aluminium handles
- Height-adjustable feet
- Soft-Close-Mechanism

**Base cabinet with 2 doors and 1 shelf**

- Powder-coated
- Aluminium handle strip
- 1 height-adjustable shelf
- Shelf loadable up to 45 kg
- Height-adjustable feet

**Wall cupboards**

- Powder-coated
- Aluminium handle strip
- Flap with gas pressure spring
- Soft-Opening-Mechanism
- Loadable up to 40 kg

**Pegboards**

- Powder-coated
- Perforation in 38 mm grid

**Worktop wood**

- Robust, 38 mm thick worktop made of impact-resistant rubber wood
- Surface sealed against moisture

040002 1,999.90 EUR\*



**SW STAHL TRUCK SERVICING BAG, 204-PIECE**

Professional quality, for mechanical and electrical work.

- Open-end spanner set, 6-32 mm
- Water pump pliers, 240 mm
- Combination pliers, 180 mm
- Hammer, 500 g
- Cable lug pliers
- Brass test lamp
- Hex key set from 2 - 10 mm
- 2 slotted screwdrivers
- 2 Phillips screwdrivers
- Assortment of cable lugs
- Assortment of cable ties



07420L 92,50 EUR\*

**SW STAHL HANDHELD LAMP, 1,200 LUMEN**

The portable hand lamp with COB technology is virtually indestructible thanks to the use of a metal housing with a polycarbonate cover. It is splash-proof and shines particularly brightly with 1,200 lumens. The integrated Li-Ion rechargeable battery provides enough power for a long working day and is durable and environmentally friendly thanks to the latest technology.

- With emergency light operation for several hours
- Shatterproof from a height of up to 2 metres
- Splash-proof, IP54
- Charging station with wall mounting option
- USB charging cable with AC/DC adapter
- 2 neodymium magnets on fold-out light support



S9790 51,50 EUR\*

**SW STAHL ENGINE BRIDGE, VW**

to support the engine when removing the gearbox.  
Suitable for:

- VW T5

Used equivalent to OE number 10-222A/23.



20304L 424,50 EUR\*

**SW STAHL INSPECTION LAMP, 550 LUMEN**

The ergonomically designed LED inspection lamp with SMD technology is your reliable companion throughout the day. The use of high-quality materials, such as aluminium and polycarbonate, makes the lamp virtually indestructible and ensures user safety during operation. The lamp can be mounted quickly and securely using the practical clip hook and a strong neodymium magnet.

- Shatterproof from up to 3 metres height
- USB charging cable with AC/DC adapter
- Clip hook with neodymium magnet



S9791 35,90 EUR\*

**SW STAHL LED BATTERY HEAD LAMP, 2W COB**

- Powerful, flicker-free light with 2W COB LED
- Low heat generation and uniform light distribution
- Dimensions approx. 100 x 50 x 40 mm
- 2-level adjustable lighting
- Excellent fit with adjustable rubber band
- Luminous flux 100 Lm (level 1) or 180 Lm (level 2)
- Integrated 3.7V / 1800 m Ah Li-Ion battery
- Incl. USB-charging cable with adapter for socket



S9716 15,50 EUR\*

**SW STAHL HYDRAULIC BOTTLE JACK, 2 T**

- Load capacity: 2,000 kg
- Lifting height 168 - 316 mm
- With safety valve



20601L 21,00 EUR\*

**SW STAHL HYDRAULIC BOTTLE JACK, 5 T**

- Load capacity: 5,000 kg
- Lifting height: 207 - 402 mm
- With safety valve



20602L 25,50 EUR\*



**SW STAHL CREEPER FOR SITTING OR LYING DOWN**

- Durable imitation leather cover
- Lockable in sitting and reclining position
- Size: 1000 x 430 mm
- Reclining height: 110 mm
- 6 swivel castors
- Load capacity 140 kg



20925L 52,90 EUR\*

**SW STAHL WORK PLATFORM, MADE OF ALUMINIUM, FOLDABLE**

Convenient working platform for hard-to-reach spaces.

- Dimensions 127 x 44.5 x 49.5 cm (L x W x H)
- Folds away to save space
- Sturdy aluminium design
- Non-slip platform surface
- Maximum load 150 kg

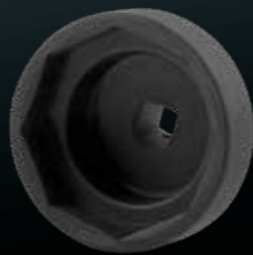


20920L 102,90 EUR\*

**SW STAHL AXLE NUT SOCKET**

for professional repairs on commercial vehicles.

- Special insert



10068L	Axle nut socket, 80 mm x 65 mm, Scania	88,90 EUR*
10065L	Axle nut socket, 111 mm x 45 mm, BPW 12 t	118,50 EUR*
10072L	Axle nut socket, 3/4", square, 100 mm, Scania	79,50 EUR*
10071L	Axle nut socket, 3/4", octagon, 115 mm, Volvo	88,90 EUR*

**SW STAHL BRAKE PISTON REWINDING TOOL, 3-PIECE**

for WABCO and Knorr disc brakes on commercial vehicle axles from SAF and other manufacturers in confined conditions.



37500L 35,50 EUR\*

**SW STAHL PIN AND GROOVE NUT SET, 4-PIECE**

for the pressure screws on the injector holder



10325L 35,90 EUR\*

**SW STAHL IMPACT SOCKET, 3/4", E22 X 110 MM**

for cylinder head bolts MAN, new TGA engines



38001L 13,70 EUR\*

**SW STAHL IMPACT SOCKET, 3/4", E18 X 110 MM**

for cylinder head bolts MAN M2000, buses with D08 engines



38003L 10,50 EUR\*

**SW STAHL IMPACT SOCKET, 3/4", E24 X 110 MM**

for fitting wheel flange bolts M18 x 1.5 as well as for changing brake discs on trucks.



38000L 17,70 EUR\*

**SW STAHL AXLE OIL PAN FOR TRUCKS**

Thanks to its special shape, the pan fits in almost every wheel on the drive axle. Ideal for collecting oil during the removal of drive axle shafts on trucks and larger vans. Clean work is improved by two handles at the edge and the spout. Temperature-resistant from -40° to +80°C.



10039L 17,70 EUR\*

**SW STAHL HOOK WRENCH, 3/4"**

Hook wrench with fixed guide tube  $\varnothing$  49.0 mm, extendable to  $\varnothing$  57.0 mm.

- No. of pins: 6
- Width of pins: 10 mm
- Inner  $\varnothing$  pin: 87 mm
- Inner  $\varnothing$  wrench: 80 mm
- Drive 20 mm (3/4") inner square



10332L 118,50 EUR\*



NEW  
PRODUCT

# THE TROLLEY WITH COMMERCIAL VEHICLE INSERTS

TT802  
BLACK

**SW STAHL** PROFESSIONAL TOOL TROLLEY TT802, BLACK, COMMERCIAL VEHICLE ASSEMBLY, 472-PIECE, 7 INLAYS

Z3206

Extra wide and modern tool trolley for professional use in all automotive and industrial businesses. The TWIN-Lock locking system makes it possible to choose whether only one or all drawers can be opened at the same time. 7 drawers equipped with 472 tools in premium quality, stored in 4/3 system foam inserts.

- 8 drawers with heavy-duty slides
- Quick-locking mechanism with soft close function on each drawer
- Stainless steel top cover with embossed grooves and side sealing
- Wheels with TPE treads ensure smooth running
- TWIN-Lock locking system
- For further details on the tool trolley, see article 07111L

Contains the following equipped 4/3 system foam inserts and tools:

- Z3011-5 / combination and ratchet spanners, 57-piece
- Z3011-8 / screwdrivers and pliers, 44-piece
- Z3011-12 / sockets 1/2", with ratchet handle, 95-piece
- Z3011-13 / sockets 1/4", 3/8", with ratchet handle, 204-piece
- Z3011-16 / Handtools, 26-piece
- Z3011-17 / sockets with ratchet handle, 3/4", 40-piece
- Z3011-18 / combination spanner, extra long, 6-piece



reddot winner 2023



GERMAN  
DESIGN  
AWARD  
WINNER  
2023



ART.: NFZ2601

Z3206

3999,90 EUR\*

