

TOOLNEWS

FOR PROFESSIONALS

SPECIAL

HIGH VOLTAGE

6

ELECTRICITY PACKAGES

PACKAGE S
PACKAGE L

12

PROTECTIVE EQUIPMENT

Electrically insulating
Protective gloves

22

SIGNS

Warning signs
Information signs

FULL OF SUSPENSE!

WHEN AN ELECTRIC CAR COMES INTO THE WORKSHOP, IT CAN BE DANGEROUS.

5 SAFETY RULES APPLY!

- 01 Disconnect
- 02 Secure against reconnection
- 03 Ensure that there is no voltage
- 04 Earthing and short-circuiting
- 05 Cover live components

We have developed our tools and protective equipment on the basis of these 5 safety rules and in compliance with DGUV Information 200-005 and 203-034.

HIGH VOLTAGE

WE ARE TALKING ABOUT HIGH VOLTAGE FROM A

- Alternating voltage of 30 volts
- Direct voltage of 60 volts

BUT ATTENTION!

Hybrid and electric vehicles have a voltage of more than

400 volts!

WORK SAFELY WITH OUR HIGH-VOLTAGE TOOLS AND PROTECTIVE EQUIPMENT!

**HIGH
VOLTAGE**

PRECISE AND SAFE

THESE ARE OUR
NEW VDE PLIERS

REFINEMENT THROUGH CORROSION
RESISTANT AND DURABLE
TEFLON FINISH SURFACE

GRIPPER TEETH AND CUTTING
EDGES ADDITIONALLY INDUCTION
HARDENED

FOR CUTTING SOFT AND
HARD WIRES WITH UP TO
1,800 N/MM² AND ALUMI-
NUM AND COPPER WIRE

INSULATED, ERGO-
NOMIC AND NON-SLIP
2-COMPONENT
HANDLE WITH ANTI-SLIP
PROTECTION

FOR HOLDING, GRIPPING,
BENDING AND CUTTING
WORK

INSERTED POWER GEAR WITH OPTI-
MUM LEVER TRANSMISSION FOR
EASY AND FATIGUE-FREE WORKING

VDE-CERTIFIED INSULA-
TION PROTECTION FOR
WORK UP TO 1,000 V (AC)
IN ACCORDANCE WITH DIN
EN IEC 60900



DESIGNED IN GERMANY

SW STAHL
PROFESSIONAL TOOLS

HIGH VOLTAGE ELECTRICITY PACKAGES

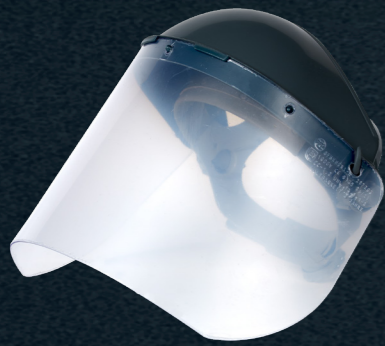
WITH OUR **ELECTRICITY PACKAGE S** YOU HAVE YOURSELF AND AN ELECTRIC VEHICLE PROTECTED IMMEDIATELY.



PROTECTIVE EQUIPMENT

1x

FACE PROTECTION SHIELD



1x

CLASS 1 PROTECTIVE GLOVES SIZE 9



1x

UNDERNEAT GLOVES



SAFETY BARRIERS

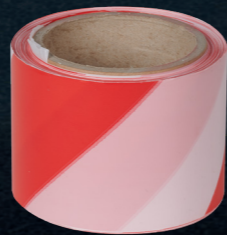
4x

CHAIN STAND



1x

BARRIER WARNING TAPE 100 M



1x

PLASTIC BARRIER CHAIN 25 M



1x

CONNECTING LINK 8 MM, RED



4x

S-HOOK 8 MM, RED



SAFETY SIGNS



1x

4x

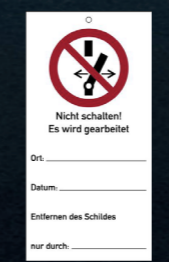
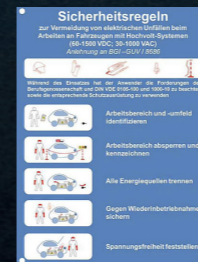


1x



1x

1x



1x

1x



1x



HIGH-VOLTAGE TOOLS

1x

VOLTAGE TESTER



V1100

566,50 €*

SW STAHL
PROFESSIONAL TOOLS

HIGH VOLTAGE ELECTRICITY PACKAGE L

WITH OUR **ELECTRICITY PACKAGE L** YOU HAVE YOURSELF AND AN ELECTRIC VEHICLE PROTECTED IMMEDIATELY.



PROTECTIVE EQUIPMENT

1x
FACE SHIELD, CLASS 1



1x
PROTECTIVE GLOVES SIZE 9

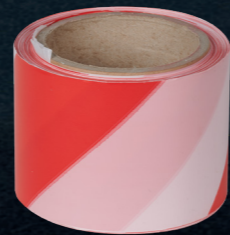


1x
UNDERGLOVES



SAFETY BARRIERS

1x
BARRIER WARNING TAPE 100 M



1x
PLASTIC BARRIER CHAIN 25 M



1x
CONNECTING LINK 8 MM, RED



4x
S-HOOK 8 MM, RED



SAFETY SIGNS



4x



1x



1x



1x



HIGH-VOLTAGE TOOLS

1x
VOLTAGE TESTER



1x
VDE HIGH-VOLTAGE TOOL SET, 50-PIECE



V1200

1.132,90 €*

HIGH VOLTAGE

HIGH-VOLTAGE TOOLS.

HIGH-VOLTAGE TESTER

ELECTRIFYING FACTS:

- For testing the absence of voltage on high-voltage vehicles
- Insulation according to CAT III 690 V, CAT IV 600 V
- DC/AC voltage measurement
- Single-pole voltage detection
- Phase rotation test
- Continuity test
- Diode test
- IP 64
- With LED illumination lamp
- Voltage range: 10 - 690 V AC/DC
- Single-pole voltage: 100 - 690 V
- Continuity test: threshold value < 200kOhm



32233L
42,50 €*

VDE TOOL SET

Our VDE tool set contains all the important tools that enable you to work on electric vehicles, live cables or other electrical objects.

All components of the set are certified in accordance with the DIN EN 60900 VDE 0682-201:2013-04 standard and are therefore insulated up to 1,000 volts AC or 1,500 volts DC.

50
PIECES

THE SUSPENSEFUL CONTENT:

- Insulated screwdrivers in the following sizes: PH1, PH2, PH3, T20, T25, T30, 2.5 - 3 - 3.5 - 4 mm
- Insulated 10 mm (3/8") sockets in the following sizes: 6 - 7 - 8 - 9 - 10 - 11 - 12 - 13 - 14 - 15 - 16 - 17 - 18 - 19 - 20 - 21 - 22 mm
- Insulated 10 mm (3/8") screwdriver sockets in the following sizes: M8, M10, M12
- Insulated 10 mm (3/8") extensions in the following sizes: 150 and 250 mm
- Stripping knife
- Insulated water pump pliers, 250 mm
- Insulated round nose pliers, straight, 200 mm
- Insulated round nose pliers, curved, 200 mm
- Insulated cable shears
- Insulated combination pliers, 180 mm
- Insulated diagonal cutters, 160 mm
- 10 insulating caps
- Insulated ratchet, 10 mm (3/8")

Translated with www.DeepL.com/Translator (free version)

V1000
530,50 €*



SW STAHL
PROFESSIONAL TOOLS

CLASS 1 FACE SHIELD

- Approved for protection against electric arcs (according to GS-ET-29, status 2019-06, class 1)
- Colorless lens according to EN 170 made of high-impact polycarbonate
- With width-adjustable headband
- Fog-free



11150L
106.00 €*



ELECTRICALLY INSULATING PROTECTIVE GLOVES

- Electrically insulating protective gloves for live working, 1 pair
- Protection class 0
- Insulation in accordance with DIN EN 60903
- For voltage < 1000 V AC and < 1500 V DC
- Color: red
- High flexibility and good tactile sensitivity, anatomical shape
- UV-protected packaging



11570L
58,50 €*

SIZE 9

11571L
63,50 €*

SIZE 10

UNDERGLOVE

The undergloves are worn under the insulating gloves to improve comfort.

- Made without seams: maximum comfort
- Material: 100% cotton
- Elastic waistband
- Universal size



11572L
7,50 €*

HIGH VOLTAGE

SAFETY LOCKOUTS.

THE SET

4 CHAIN STANDS

- Mobile plastic chain stand with 2 eyelets for attaching barrier chains
- For outdoor and indoor use
- Quick to set up
- With black base made of weather-resistant recycled material
- Good stability
- The base can be dowelled or glued in place
- Material: Plastic
- Color: red/white
- Height: 850 mm
- Weight: 1.5 kg



1 PLASTIC BARRIER CHAIN

- Suitable for versatile applications- Short-link chains for a high perception effect
- Color: Red/White
- Length: 25 meters
- Diameter: 8 mm
- Link length: 48 mm
- Link width: 27 mm



1 CONNECTING LINK 8 MM, RED



4 S-HOOKS 8 MM, RED



07326L
97,00 €*

SAFETY LOCKOUTS.

CHAIN STAND

- Mobile plastic chain stand with 2 eyelets for attaching barrier chains
- For outdoor and indoor use
- Quick to set up
- With black base made of weather-resistant recycled material
- Good stability
- The base can be dowelled or glued in place
- Material: Plastic
- Color: red/white
- Height: 850 mm
- Weight: 1.5 kg



PRICE PER UNIT



PLASTIC BARRIER CHAIN

- Suitable for versatile applications- Short-link chains for a high perception effect
- Color: Red/White
- Length: 25 meters
- Diameter: 8 mm
- Link length: 48 mm
- Link width: 27 mm



1 CONNECTING LINK 8 MM, RED

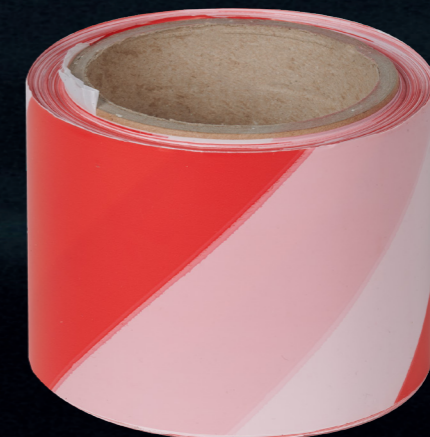


4 S-HOOKS 8 MM, RED



BARRIER WARNING TAPE

- Robust design, printed diagonally on both sides
- Color: red/white
- Length: 100 meters
- Width: 80 mm
- Thickness: approx. 30 µ



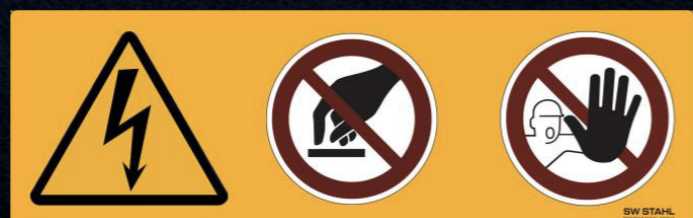
ADHESIVE LABEL FOR DAMAGED E-VEHICLES

- Is affixed to the windows of the damaged vehicle.
- The label is easy to remove after towing and repair.
- Dimensions 100 x 200 mm



SIGN FOR ELECTRIC AND HYBRID VEHICLES

- Information sign to prevent electrical accidents when working on electric and hybrid vehicles
- With pictogram Warning of electrical voltage in accordance with ASR A1.3, DIN EN ISO 7010/W012
- With pictogram Do not touch in accordance with ASR A1.3, DIN EN ISO 7010/P010
- With pictogram No access for unauthorized persons in accordance with DIN EN ISO 4844-2/D-P006
- Made of plastic, 440 x 140 mm



TETRAHEDRAL WARNING SIGN „LIGHTNING ARROW“

- Tetrahedral roof display made of plastic with suction base
- „Lightning arrow“ warning sign attached on three sides
- Warning of dangerous electrical voltage in accordance with DIN EN ISO 7010
- For marking during repairs/maintenance work on electric vehicles
- Weatherproof
- Water drainage hole



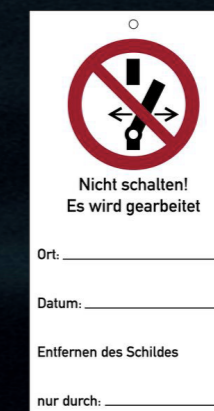
PROHIBITION SIGN „NO SHIFTING“

- In accordance with DGUV information 200-005
- Magnetic prohibition sign for attaching to the outside of the vehicle
- To prevent the power from being switched on unintentionally
- Self-labeling field for the name of the HV specialist and their telephone number
- With pictogram Switching prohibited in accordance with ASR A1.3, DIN EN ISO 7010/P031
- Magnetic foil, 297 x 210 mm



MAINTENANCE TAG „SWITCHING PROHIBITED“

- In accordance with DGUV Information 200-005
- Warning tag for attachment in the vehicle
- To prevent the power being switched on unintentionally
- Combination sign for attaching to the service disconnect
- Self-labeling field for the name of the HV expert and their telephone number
- With pictogram Switching prohibited in accordance with ASR A1.3, DIN EN ISO 7010/P031
- Made of plastic, 75 x 150 mm



PROHIBITION SIGN „NO LOADING“

- Magnetic prohibition sign for attaching to the outside of the vehicle
- To prevent unintentional charging of the vehicle battery
- Magnetic foil, 297 x 210 mm



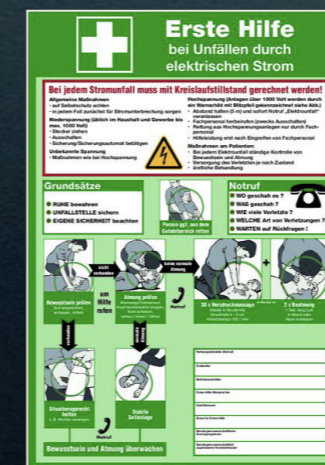
„HIGH-VOLTAGE „SWITCHED ON“ SIGN

- In accordance with DGUV Information 200-005
- Magnetic prohibition sign for attaching to the outside of the vehicle
- To prevent accidents on high-voltage vehicles
- Self-labeling field for the name of the HV expert and their telephone number
- Warning sign „Warning of dangerous electrical voltage“ in accordance with DIN4844D-W008.
- Magnetic foil, 297 x 210 mm



„FIRST AID“ NOTICE

- First aid notice for accidents caused by electrical current
- With additional warning notice „Warning of electrical voltage“ in accordance with current ISO 7010 and modernized pictograms- Proven in practice
- For indoor and outdoor use
- Material: plastic, 595 x 410 mm



„SAFETY RULES“ NOTICE

- Based on DGUV information 200-005
- Safety rules for the prevention of electrical accidents when working on vehicles with high-voltage systems
- Fixing holes: diameter 5 mm
- Plastic information sign, 350 x 500 mm



HIGH VOLTAGE

HIGH-VOLTAGE TOOLS.

PLIERS SET

1,000 VOLTS, VDE, 3 PARTS

- Manufactured according to the respective DIN ISO 5745 / 5746 / 5749
- VDE-certified insulation protection for work up to 1,000 V (AC) according to DIN EN IEC 60900
- For holding, gripping, bending and cutting work
- Gripping zones for flat and round material
- By integrating a ring wrench and burner hole for
- Maximum socket size 19 mm or maximum head diameter 20 mm
- For cutting soft and hard wires with tensile strengths up to 1,800 N/mm² and aluminum and copper wires with up to 12mm diameter
- Gripping teeth and cutting edges additionally inductively hardened
- Inlaid power industry with optimal leverage ratio for easy and fatigue-free work
- Made of chrome vanadium steel, forged, oil-hardened
- Finished with a corrosion-resistant and durable "Teflon Finish" surface
- Insulated, ergonomic and non-slip 2-component handles with slip protection
- "Designed in Germany"

40100L
48,90 €*



POINTED PLIERS

STRAIGHT, 200 MM, 1,000 VOLT, VDE

- Manufactured according to DIN ISO 5745
- VDE-certified insulation protection for work up to 1,000 V (AC) according to DIN EN IEC 60900
- For holding, gripping, bending and cutting work
- With long, 45° angled, flat, round jaws
- Serrated gripping surfaces
- By integrating a ring wrench and burner hole for maximum socket size 19 mm or maximum
- Head diameter 20 mm suitable
- For cutting soft and hard wires with up to 1,800 N/mm² and aluminum and copper wire with a diameter of up to 13 mm
- Gripping teeth and cutting edges additionally inductively hardened
- Inlaid power industry with optimal leverage ratio for easy and fatigue-free work
- Made of chrome vanadium steel, forged, oil-hardened
- Finishing through corrosion-resistant and durable Teflon finish surface
- Insulated, ergonomic and non-slip 2-component
- Handle with anti-slip protection
- "Designed in Germany"

40775L
17,90 €*



COMBINATION PLIERS

180 MM, 1,000 VOLTS, VDE

- Manufactured according to DIN ISO 5746
- VDE-certified insulation protection for work up to 1,000 V (AC) in accordance with DIN EN IEC 60900
- For holding, gripping, bending and cutting work
- Gripping zones for flat and round material
- Due to the integration of ring wrench and torch hole, suitable for a maximum socket wrench size of 19 mm or a maximum head diameter of 20 mm
- For cutting soft and hard wires with up to 1,800 N/mm² and aluminum and copper wire with a diameter of up to 12 mm
- Gripping teeth and cutting edges additionally inductively hardened
- Inlaid power industry with optimal lever transmission for easy and fatigue-free work
- Made of chrome vanadium steel, forged, oil-hardened
- Finished with a corrosion-resistant and durable Teflon finish surface
- Insulated, ergonomic and non-slip 2-component
- Handle with anti-slip protection
- "Designed in Germany"

40474L
17,90 €*



POINTED PLIERS

CURVED, 200 MM, 1,000 VOLTS, VDE

- Manufactured according to DIN ISO 5745
- VDE-certified insulation protection for work up to 1,000 V (AC) according to DIN EN IEC 60900
- For holding, gripping, bending and cutting work
- With long, 45° angled, flat, round jaws
- Serrated gripping surfaces
- By integrating a ring wrench and burner hole for maximum socket size 19 mm or maximum
- Head diameter 20 mm suitable
- For cutting soft and hard wires with up to 1,800 N/mm² and aluminum and copper wire with up to 13 mm diameter
- Gripping teeth and cutting edges additionally inductively hardened
- Pickled power industry with optimal leverage for easy and fatigue-free work
- Made of chrome vanadium steel, forged, oil-hardened
- Finishing through corrosion-resistant and durable Teflon finish surface
- Insulated, ergonomic and non-slip 2-component
- Handle with anti-slip protection
- "Designed in Germany"

40875L
17,90 €*



SW STAHL
PROFESSIONAL TOOLS

HIGH VOLTAGE

SIDE CUTTER

160 MM, 1.000 VOLT, VDE

- Manufactured according to DIN ISO 5749
- VDE-certified insulation protection for work up to 1,000 V (AC) according to DIN EN IEC 60900
- Precision cutting for the finest wires
- Cutting edge hardness approx. 62 HRC
- Cutting edges additionally induction hardened
- For cutting soft and hard wires with up to 1,800 N/mm² and aluminum and copper wire with up to 11mm diameter
- Inlaid power industry with optimal leverage ratio for easy and fatigue-free work
- Made of chrome vanadium steel, forged, oil-hardened
- Finishing through corrosion-resistant and durable Teflon finish surface
- More insulated, ergonomic and non-slip
- 2-component handle with slip protection
- "Designed in Germany"

40573L

21,00 €*



WATER PUMP PLIERS

250 MM, 1.000 VOLT, VDE

- Manufactured according to DIN ISO 8976
- VDE-certified insulation protection for work up to 1,000 V (AC) according to DIN EN IEC 60900
- For holding, gripping and bending work with maximum Wrench size or pipe diameter of 50 mm
- Compact, narrow shape with optimal jaw geometry for Working in confined spaces and in hard-to-reach places
- Push button adjustment with fine teeth, quick and precise
- Gripping jaws with double, self-clamping teeth
- Gripping teeth additionally inductively hardened
- Push-through joint with wide guide surfaces
- Pinch protection for safe working, prevented
- Crush injuries
- Made of chrome vanadium steel, forged, oil-hardened
- Finishing through corrosion-resistant and durable Teflon finish surface
- Optimal grip position and shape for the greatest possible grip
- Power transmission
- More insulated, ergonomic and non-slip
- 2-component handle with slip protection
- "Designed in Germany"

40377L

27,50 €*



SW STAHL
PROFESSIONAL TOOLS

WWW.SWSTAHL.DE | WWW.TOOL-IS.COM